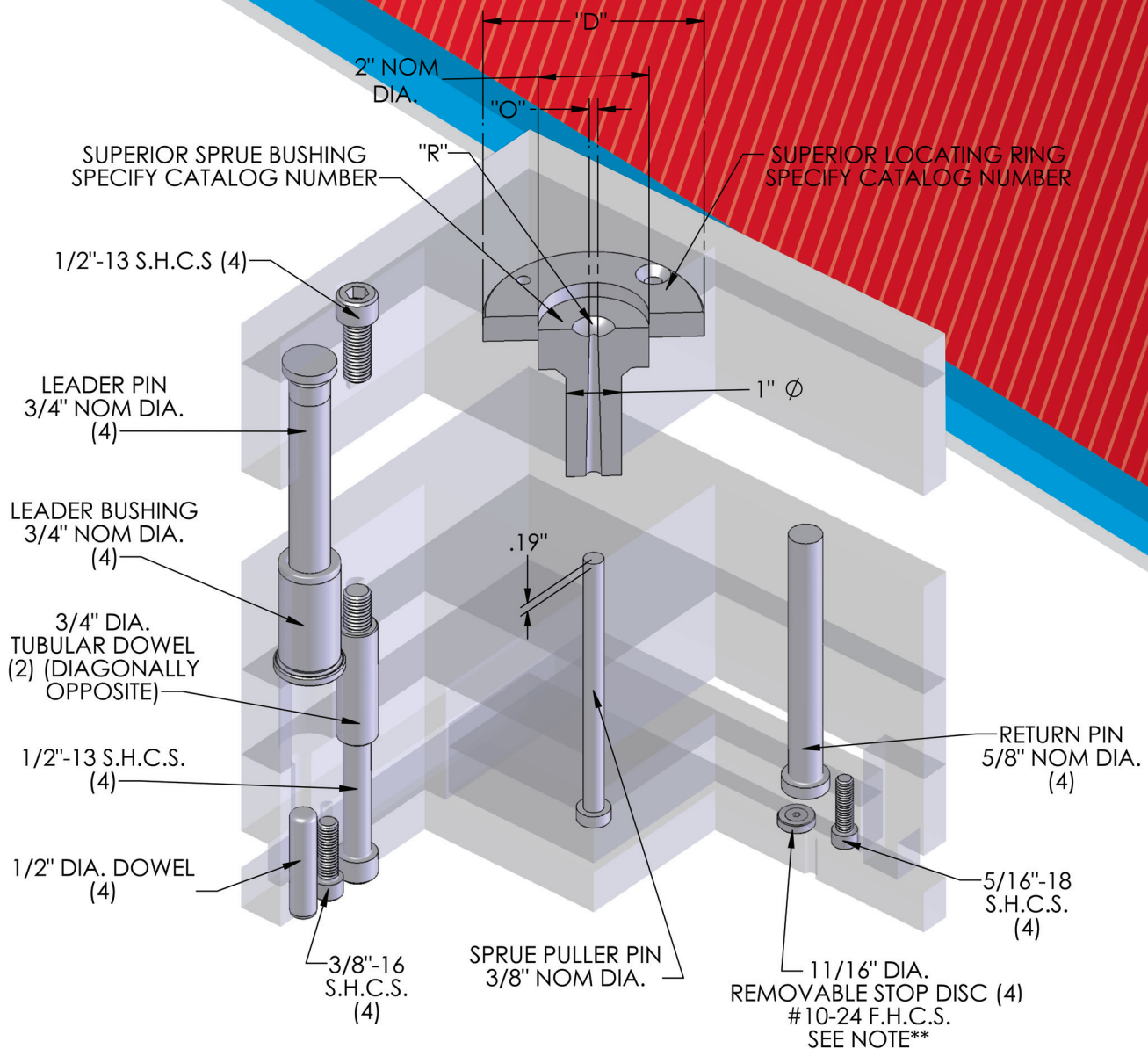




MOLD BASE LOCATIONS





Click here to return to the **Table of Contents**



Click here for **3D CAD Link**



website

Quick link to **Main Website**



catalog

Quick link to **Master Catalog**



3D model

Quick link to **3D CAD Link**



video

Quick link to **Videos**

Note: When viewing the electronic version, simply click on the image in the right hand corner, and the link will automatically take you to 3D CAD Link.

To use 3D CAD Link:

Click on the Configure & Download Button

(Login required) [Configure & Download](#)

Login to your account

Welcome **Guest** [[Login](#) | [Register](#)]

Finish your product configuration

900 West Drexel Avenue
Oak Creek, WI 53154

(800) 558-6040
FAX (800) 657-0855

www.superiordieset.com
messages@superiordieset.com



TABLE OF CONTENTS

MOLD BASE LOCATIONS

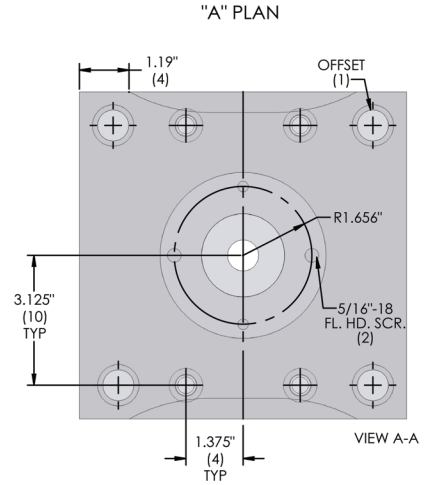
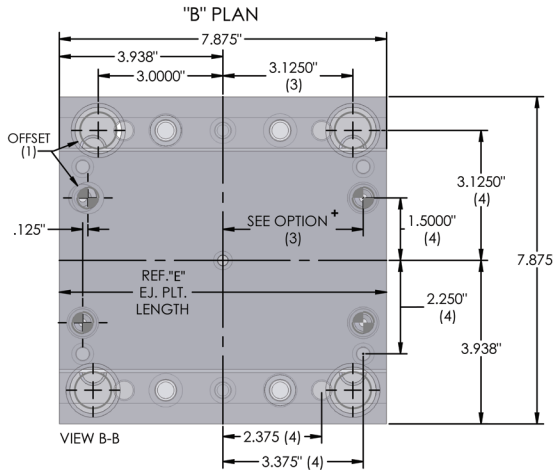
WIDTH	LENGTH	PART NO.	PAGE
7 7/8	7 7/8	0808	3010
	11 7/8	0812	3020
9 7/8	8	1008	3030
	11 7/8	1012	3040
	16	1016	3050
	20	1020	3060
10 7/8	12	1112	3070
	14	1114	3080
	18	1118	3090
	23 1/2	1123	3100
11 7/8	12	1212	3110
	15	1215	3120
	20	1220	3130
	23 1/2	1223	3140
13 3/8	15	1315	3150
	18	1318	3160
	20 3/4	1321	3170
	23 1/2	1323	3180
	26	1326	3190
	29 1/2	1329	3200
14 7/8	17 7/8	1518	3210
	23 3/4	1524	3220
	29 1/2	1529	3230

WIDTH	LENGTH	PART NO.	PAGE
15 7/8	16	1616	3240
	20	1620	3250
	23 1/2	1623	3260
	26	1626	3270
	29 1/2	1629	3280
	35 1/2	1635	3290
16 1/2	23 3/4	1724	3300
	29 1/2	1729	3310
17 7/8	18	1818	3320
	20	1820	3330
	23 1/2	1823	3340
	26	1826	3350
	29 1/2	1829	3360
	35	1835	3370
19 1/2	23 3/4	1924	3380
	29 1/2	1929	3390
	35 1/2	1935	3400
23 3/4	23 3/4	2424	3410
	29 1/2	2429	3420
	35 1/2	2435	3430

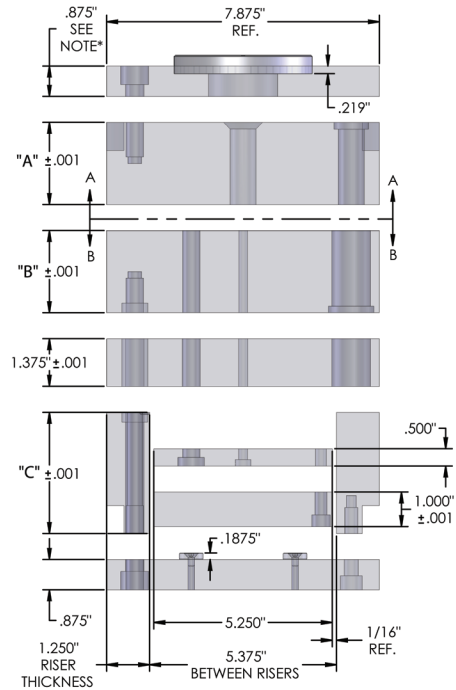
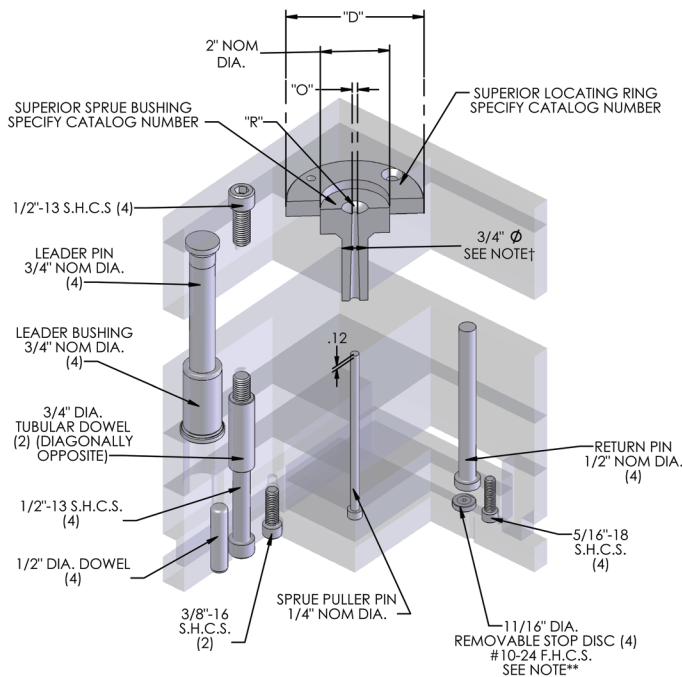


7 7/8" x 7 7/8"

0808



+ SEE MOLD BASE SECTION PG. 2110



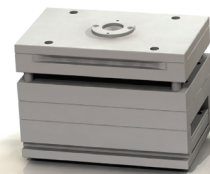
*1 3/8" TCP AVAILABLE

**PRESS FIT STOP PIN AVAILABLE ON REQUEST

†SPRUE BUSHING DIA = 1.0" IF COMBINED THICKNESS OF TCP & A > 4.281"

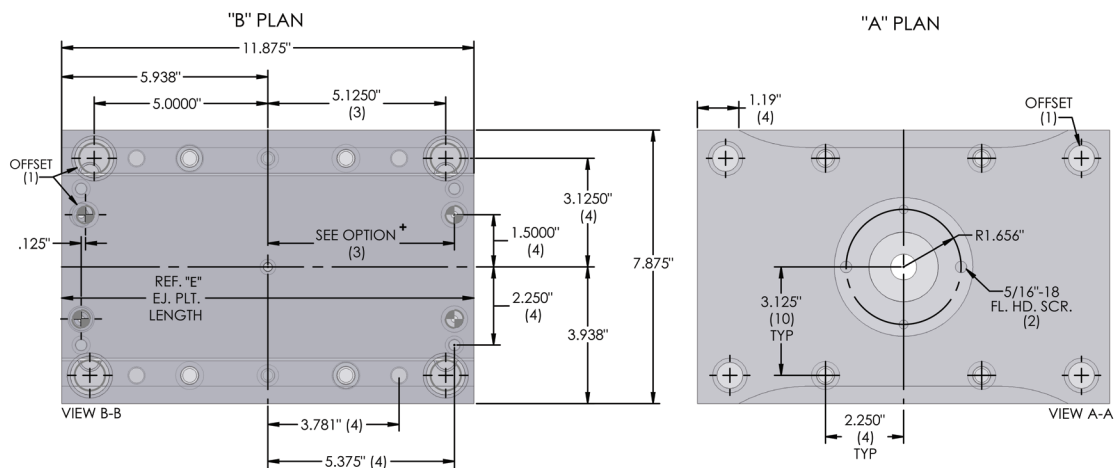
SEE CLAMP SLOT OPTIONS PAGE FOR CLAMP SLOT METHOD

C Height	2.500	3.000	3.500	4.000	4.500	5.000
Stroke	0.813	1.313	1.813	2.313	2.813	3.313

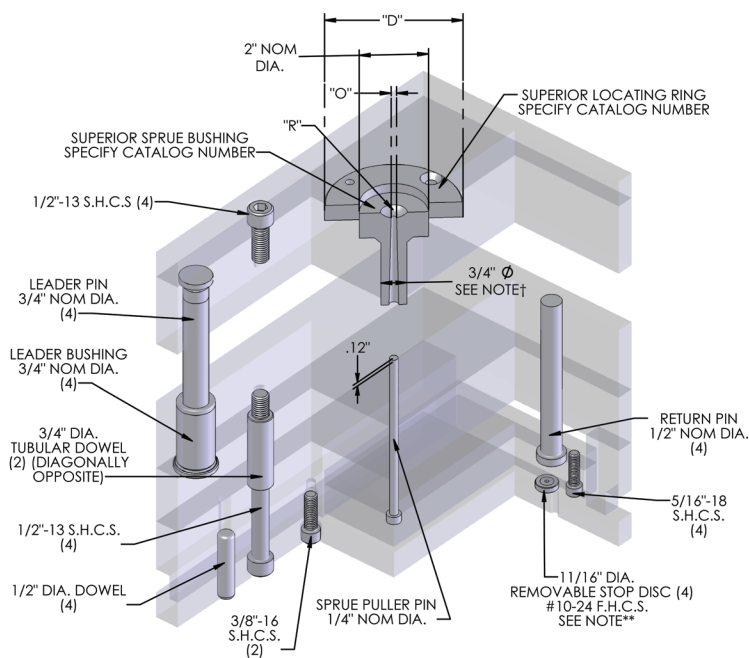


7 7/8" x 11 7/8"

0812



+ SEE MOLD BASE SECTION PG. 2110



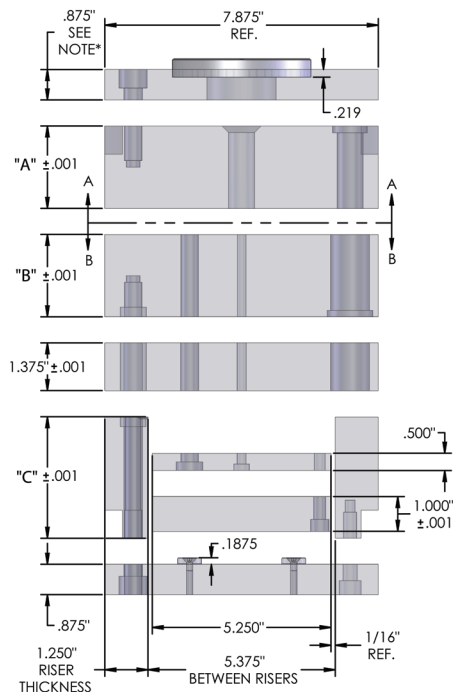
ISOMETRIC SECTION VIEW

*1 3/8" TCP AVAILABLE

**PRESS FIT STOP PIN AVAILABLE ON REQUEST

†SPRUE BUSHING DIA = 1.0" IF COMBINED THICKNESS OF TCP & A > 4.281"

SEE CLAMP SLOT OPTIONS PAGE FOR CLAMP SLOT METHOD



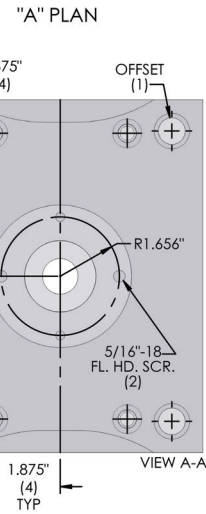
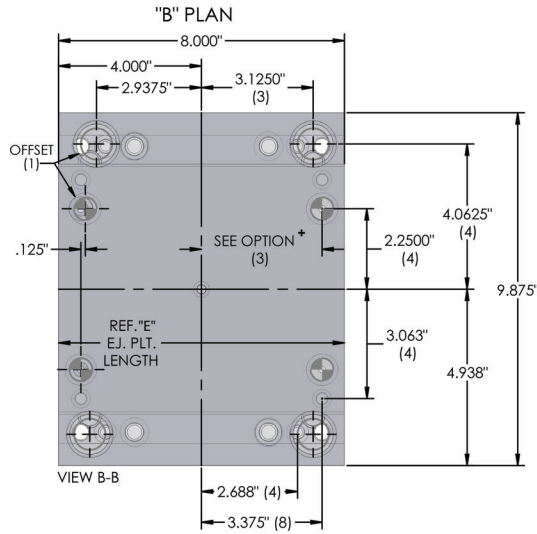
SIDE VIEW

C Height	2.500	3.000	3.500	4.000	4.500	5.000
Stroke	0.813	1.313	1.813	2.313	2.813	3.313

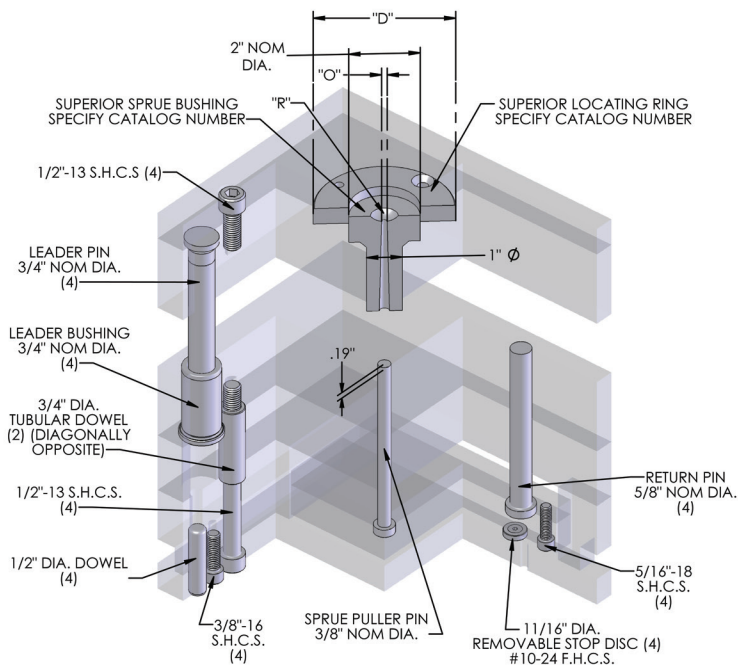


9 7/8" x 8"

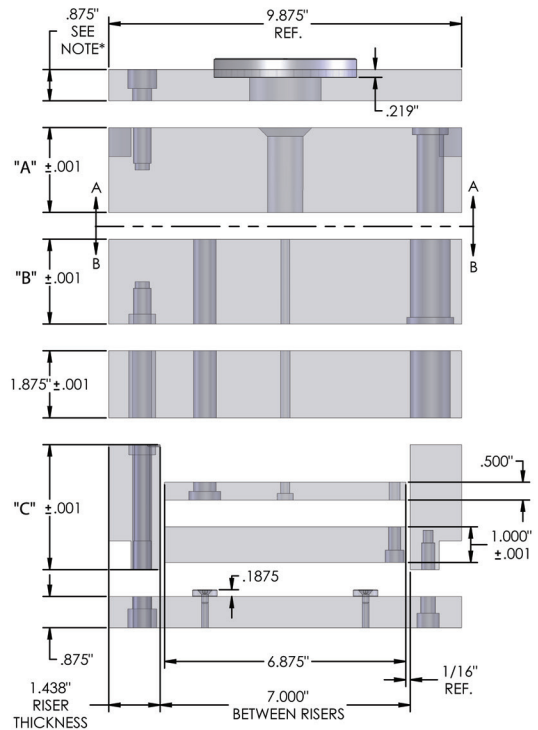
1008



+ SEE MOLD BASE SECTION PG. 2110



ISOMETRIC SECTION VIEW



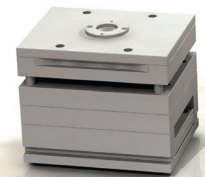
SIDE VIEW

*1 3/8" TCP AVAILABLE

**PRESS FIT STOP PIN AVAILABLE ON REQUEST

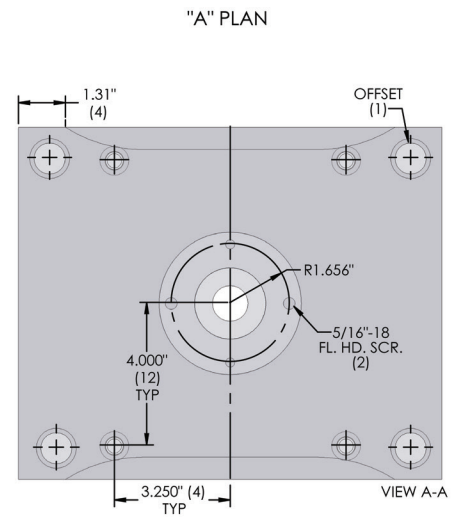
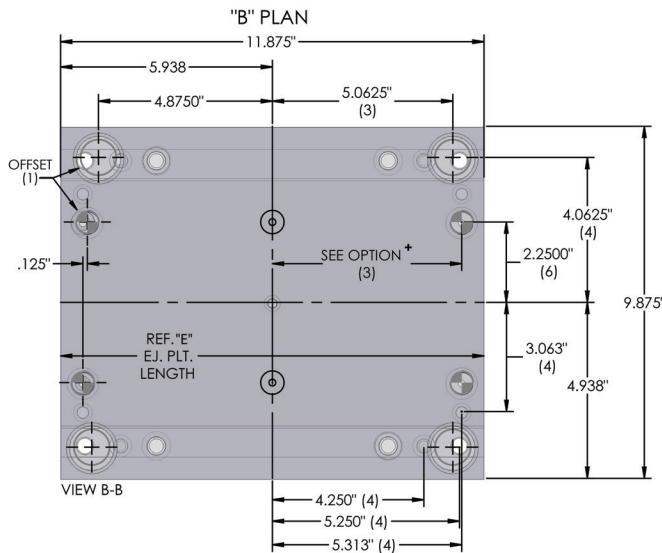
SEE CLAMP SLOT OPTIONS PAGE FOR CLAMP SLOT METHOD

C Height	2.500	3.000	3.500	4.000	4.500	5.000
Stroke	0.813	1.313	1.813	2.313	2.813	3.313

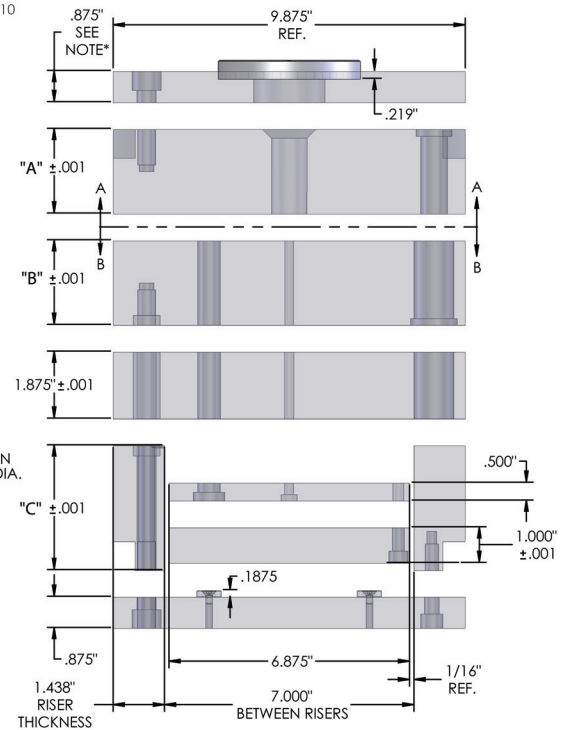
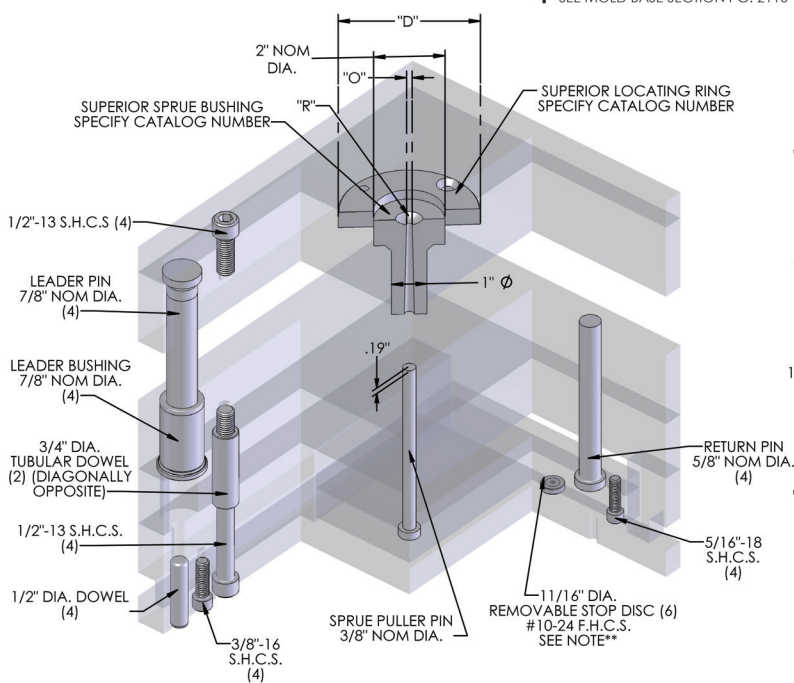


9 7/8" x 11 7/8"

1012



+ SEE MOLD BASE SECTION PG. 2110



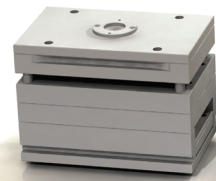
ISOMETRIC SECTION VIEW

*1 3/8" TCP AVAILABLE

**PRESS FIT STOP PIN AVAILABLE ON REQUEST

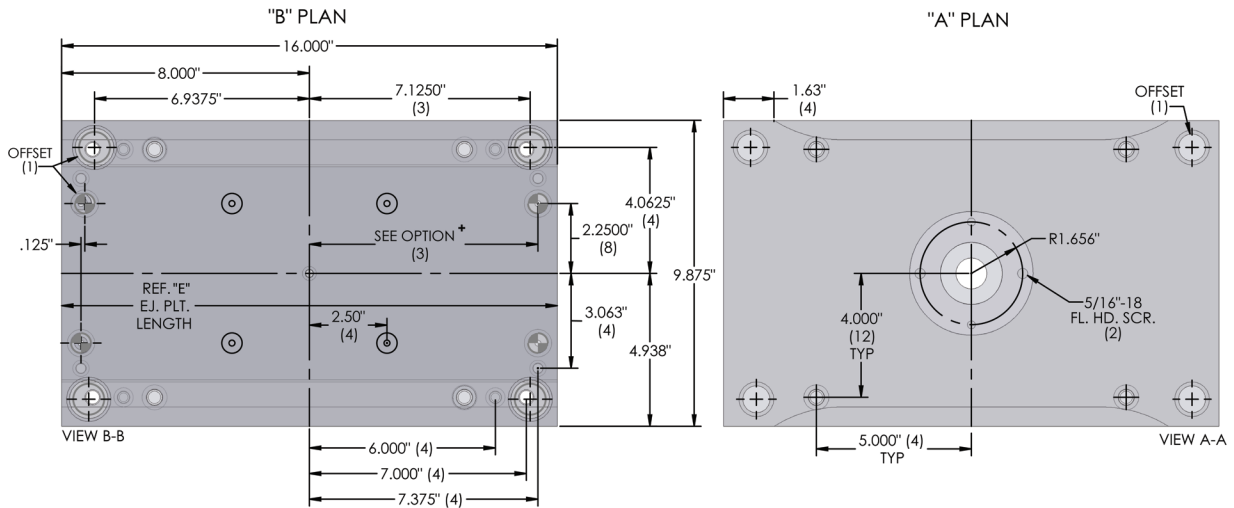
SEE CLAMP SLOT OPTIONS PAGE FOR CLAMP SLOT METHOD

C Height	2.500	3.000	3.500	4.000	4.500	5.000
Stroke	0.813	1.313	1.813	2.313	2.813	3.313

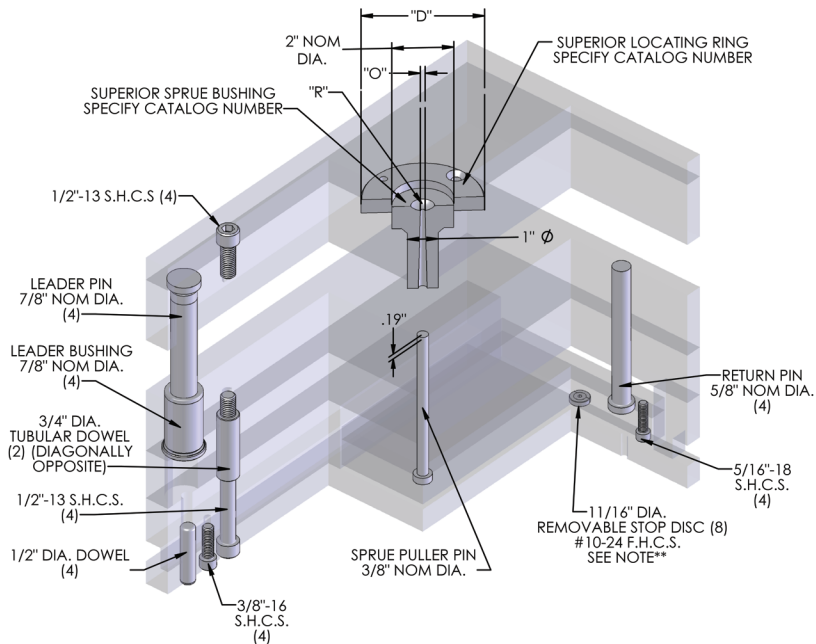


9 7/8" x 16"

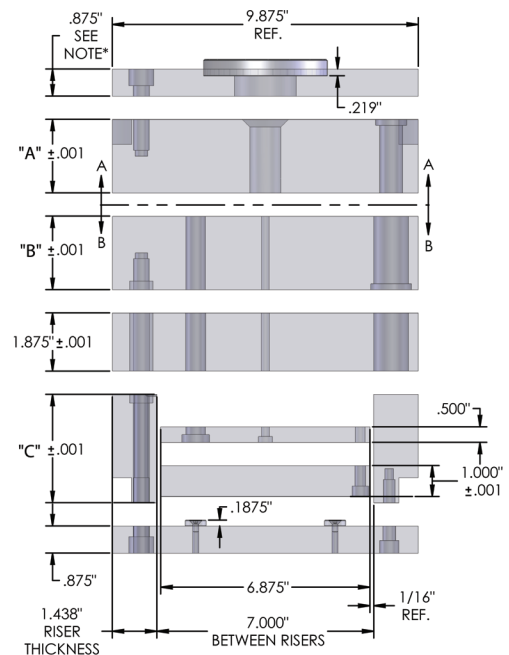
1016



+ SEE MOLD BASE SECTION PG. 2110



ISOMETRIC SECTION VIEW



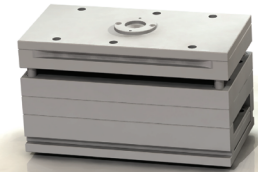
SIDE VIEW

*1 3/8" TCP AVAILABLE

**PRESS FIT STOP PIN AVAILABLE ON REQUEST

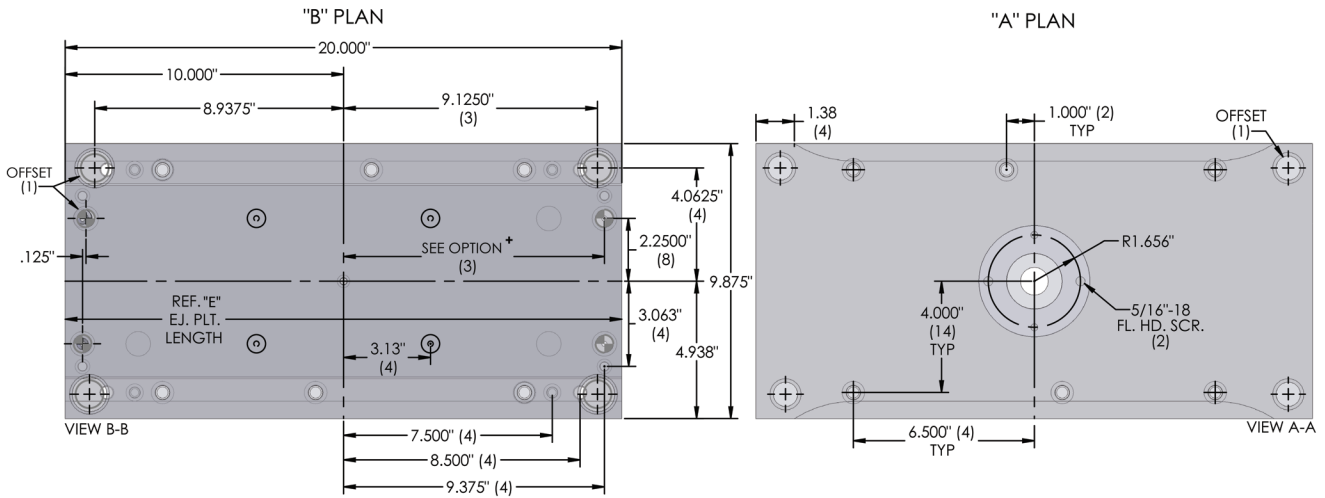
SEE CLAMP SLOT OPTIONS PAGE FOR CLAMP SLOT METHOD

C Height	2.500	3.000	3.500	4.000	4.500	5.000
Stroke	0.813	1.313	1.813	2.313	2.813	3.313

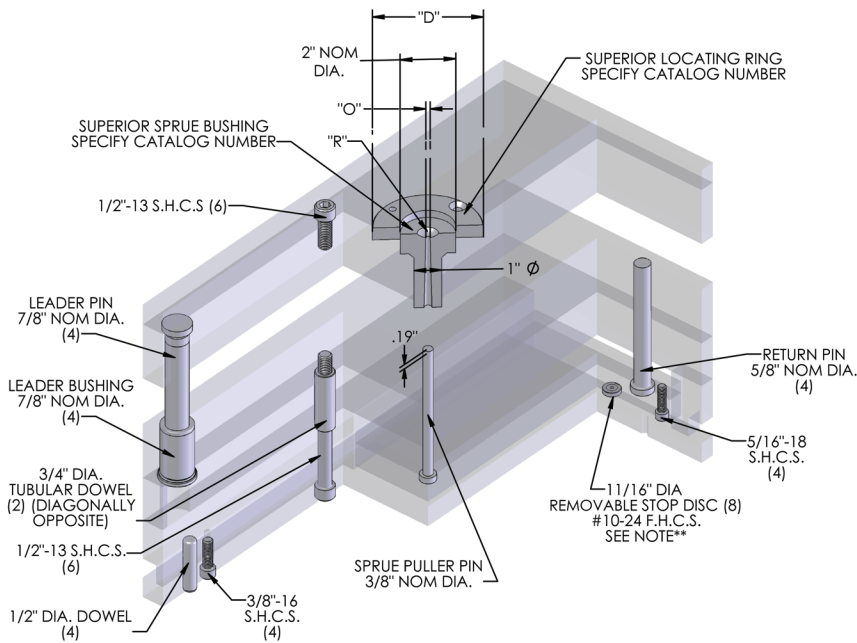


9 7/8" x 20"

1020



✦ SEE MOLD BASE SECTION PG. 2110

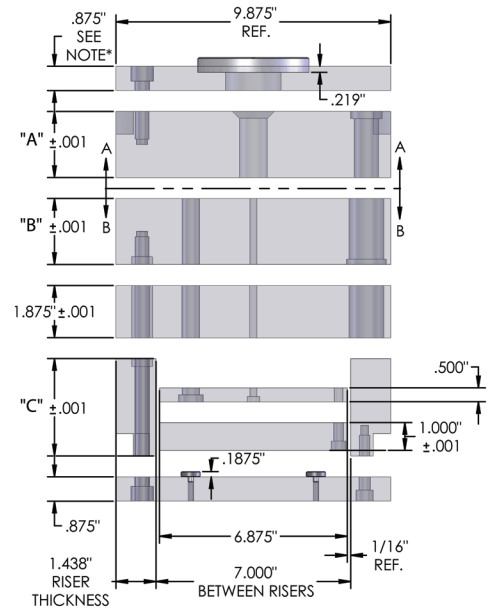


ISOMETRIC SECTION VIEW

*1 3/8" TCP AVAILABLE

**PRESS FIT STOP PIN AVAILABLE ON REQUEST

SEE CLAMP SLOT OPTIONS PAGE FOR CLAMP SLOT METHOD



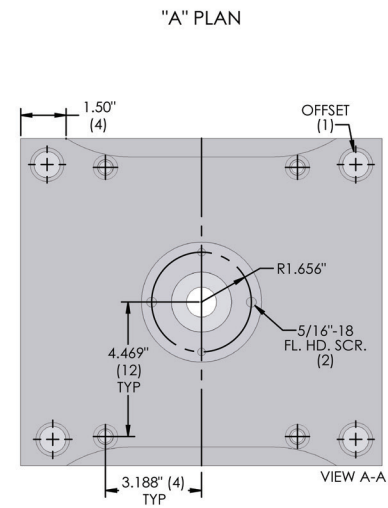
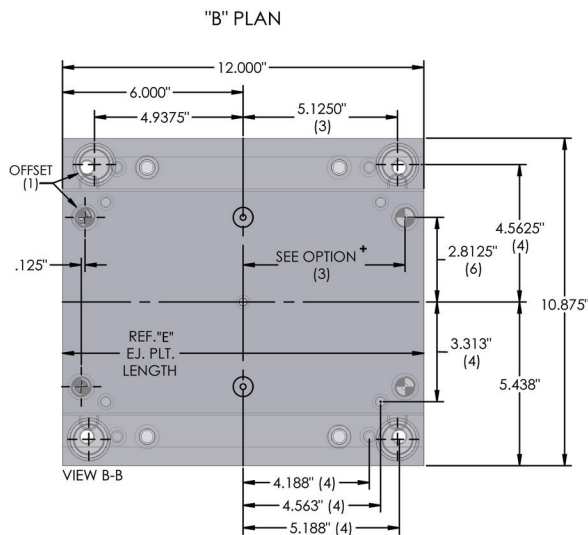
SIDE VIEW

C Height	2.500	3.000	3.500	4.000	4.500	5.000
Stroke	0.813	1.313	1.813	2.313	2.813	3.313

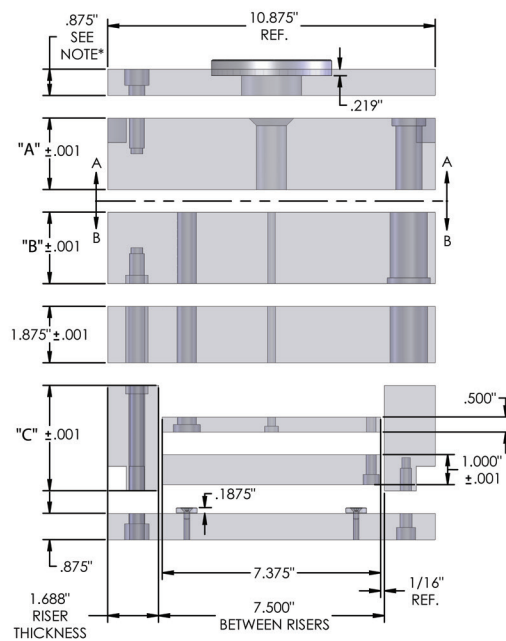
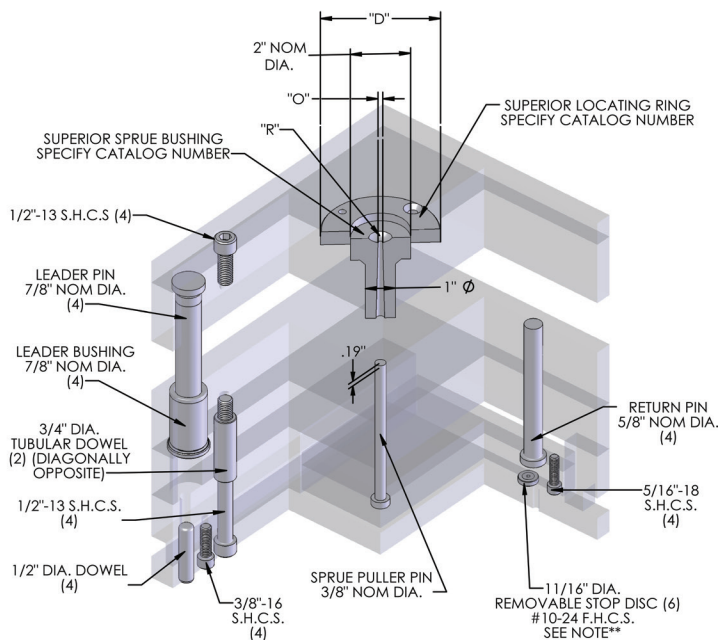


10 7/8" x 12"

1112



✦ SEE MOLD BASE SECTION PG. 2110

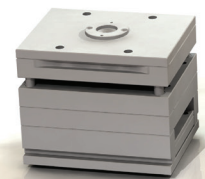


*1 3/8" TCP AVAILABLE

**PRESS FIT STOP PIN AVAILABLE ON REQUEST

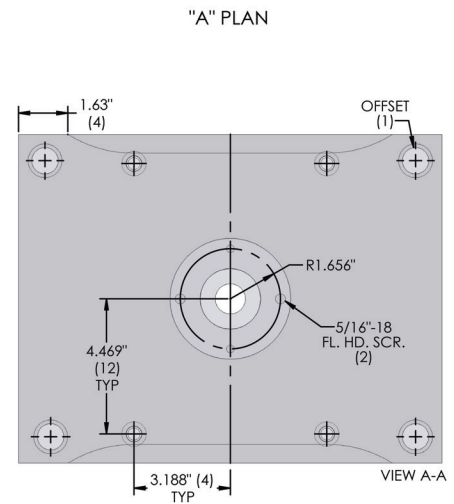
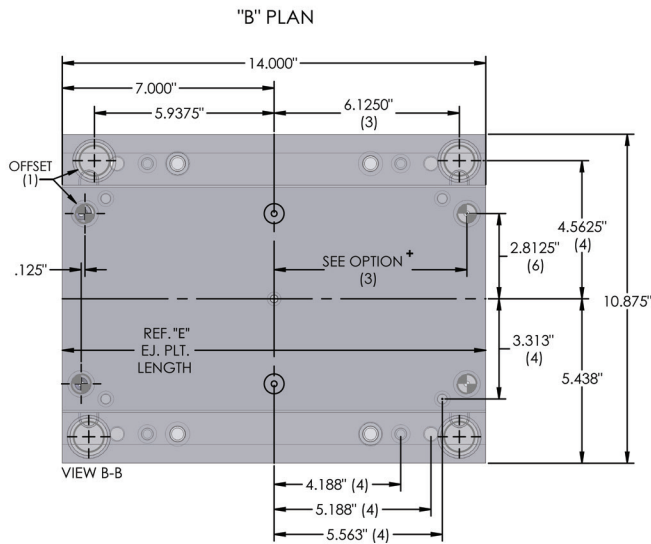
SEE CLAMP SLOT OPTIONS PAGE FOR CLAMP SLOT METHOD

C Height	2.500	3.000	3.500	4.000	4.500	5.000
Stroke	0.813	1.313	1.813	2.313	2.813	3.313

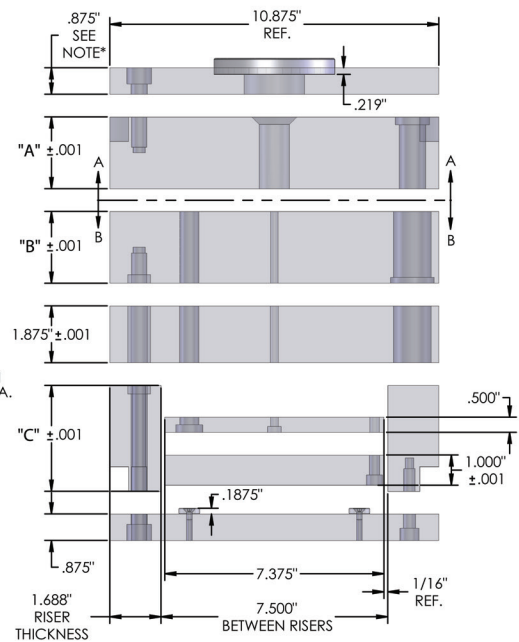
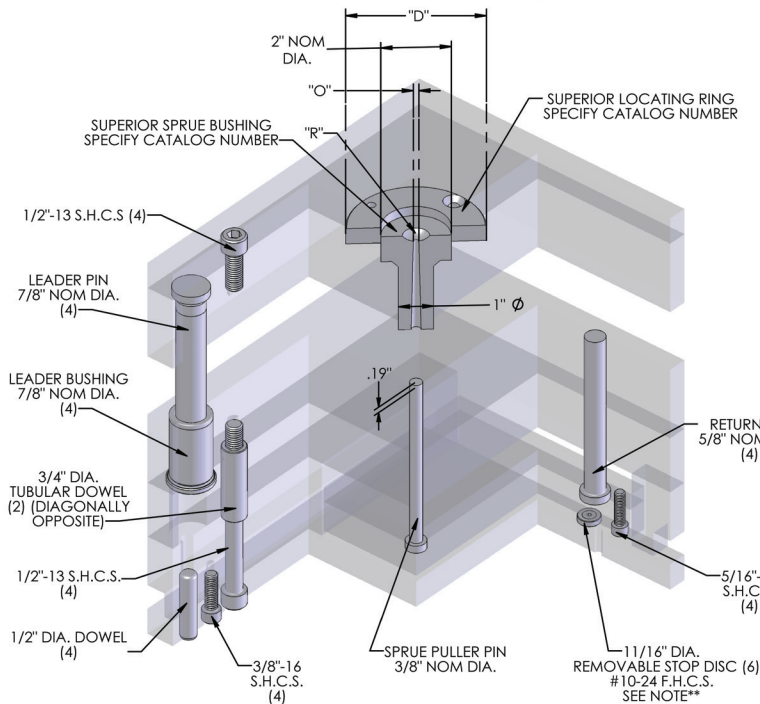


10 7/8" x 14"

1114



SEE MOLD BASE SECTION PG. 2110

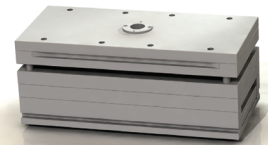


*1 3/8" TCP AVAILABLE

**PRESS FIT STOP PIN AVAILABLE ON REQUEST

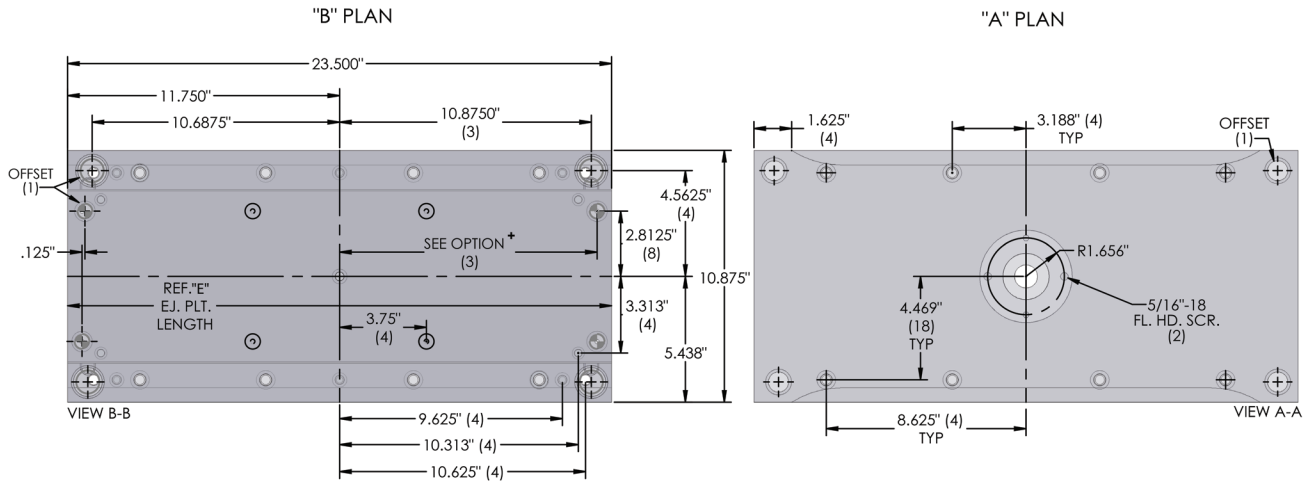
SEE CLAMP SLOT OPTIONS PAGE FOR CLAMP SLOT METHOD

C Height	2.500	3.000	3.500	4.000	4.500	5.000
Stroke	0.813	1.313	1.813	2.313	2.813	3.313

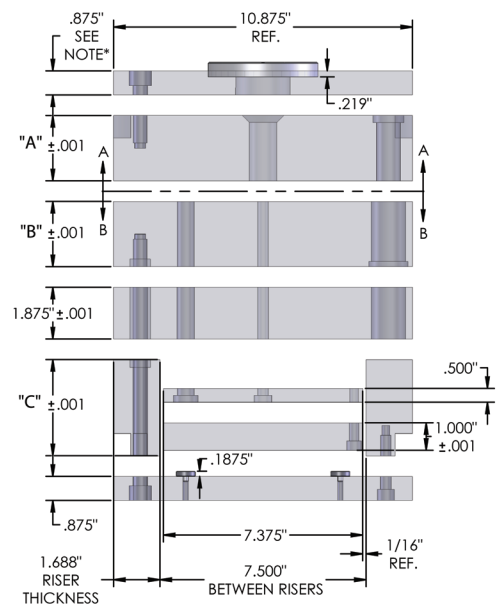
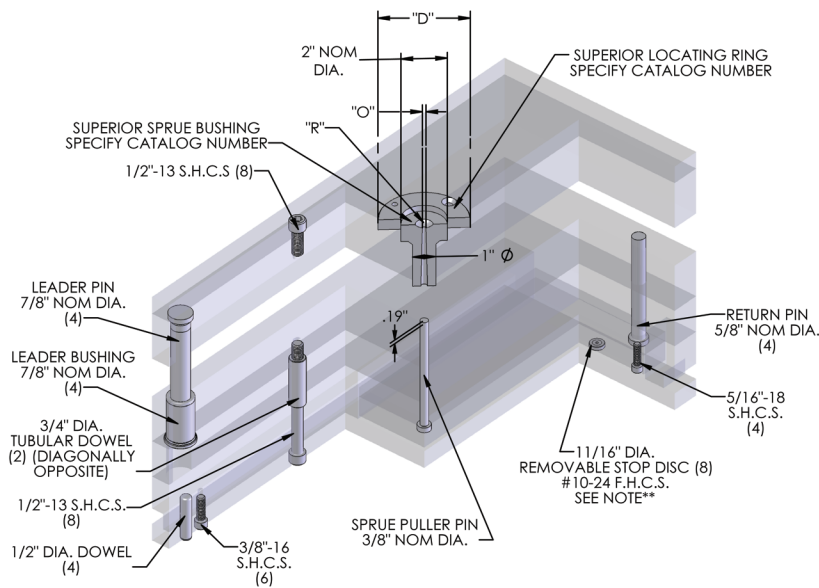


10 7/8" x 23 1/2"

1123



+ SEE MOLD BASE SECTION PG. 2110



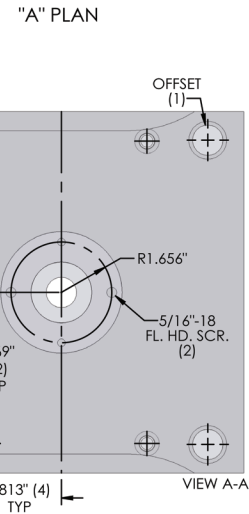
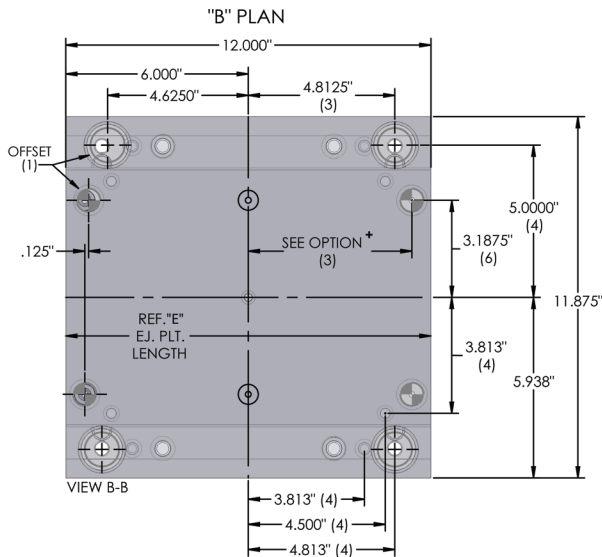
*1 3/8" TCP AVAILABLE
 **PRESS FIT STOP PIN AVAILABLE ON REQUEST
 SEE CLAMP SLOT OPTIONS PAGE FOR CLAMP SLOT METHOD

C Height	2.500	3.000	3.500	4.000	4.500	5.000
Stroke	0.813	1.313	1.813	2.313	2.813	3.313

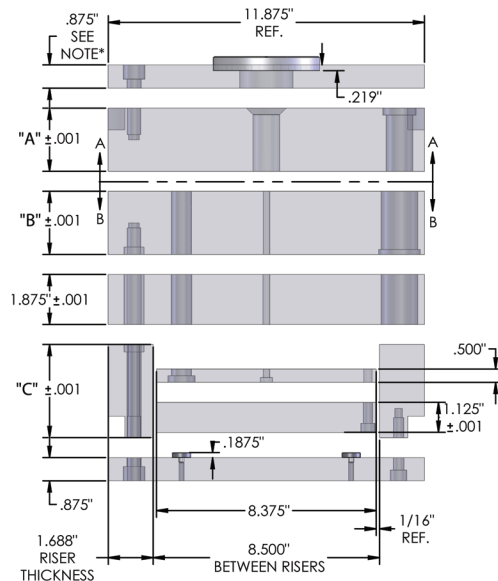
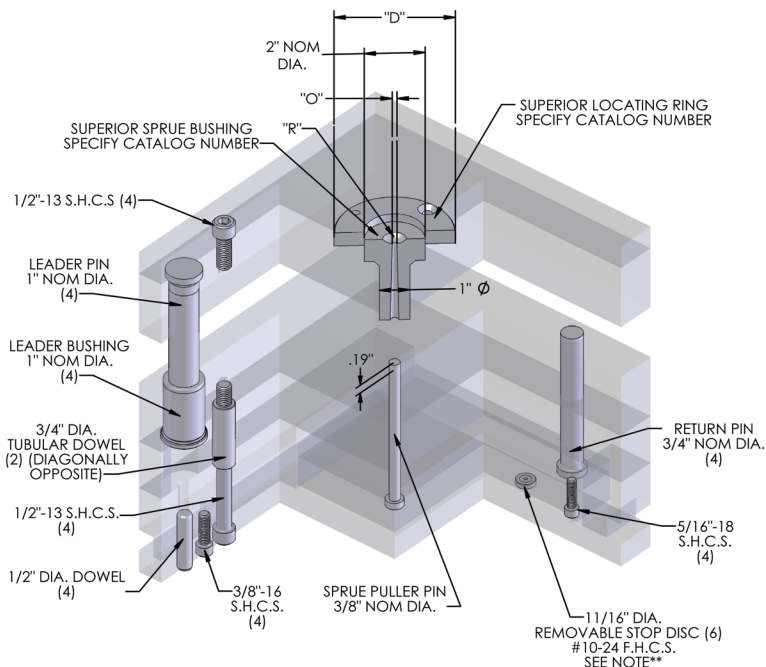


11 7/8" x 12"

1212



+ SEE MOLD BASE SECTION PG. 2110

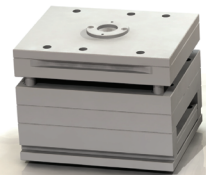


*1 3/8" TCP AVAILABLE

**PRESS FIT STOP PIN AVAILABLE ON REQUEST

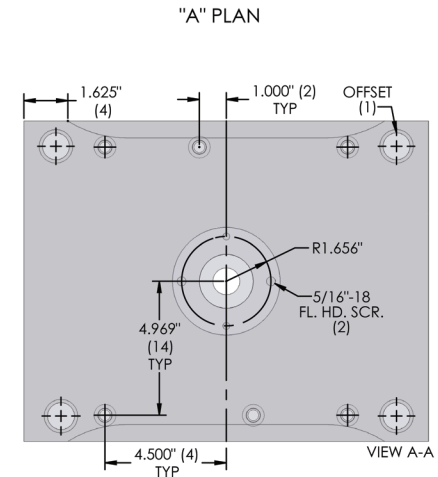
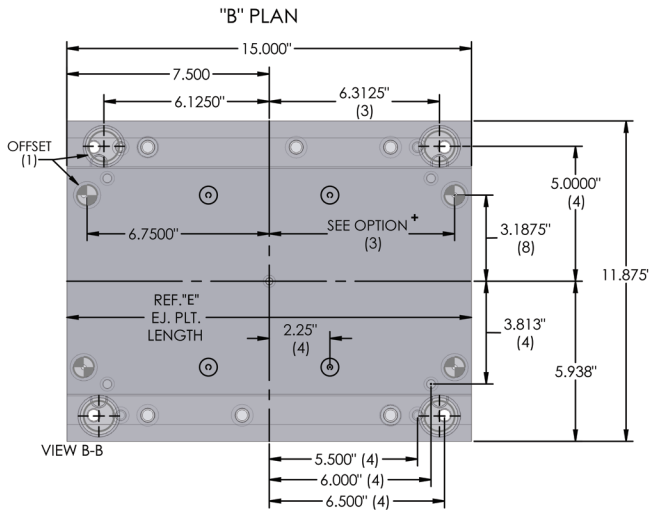
SEE CLAMP SLOT OPTIONS PAGE FOR CLAMP SLOT METHOD

C Height	3.000	3.500	4.000	4.500	5.000	6.000
Stroke	1.188	1.688	2.188	2.688	3.188	4.188

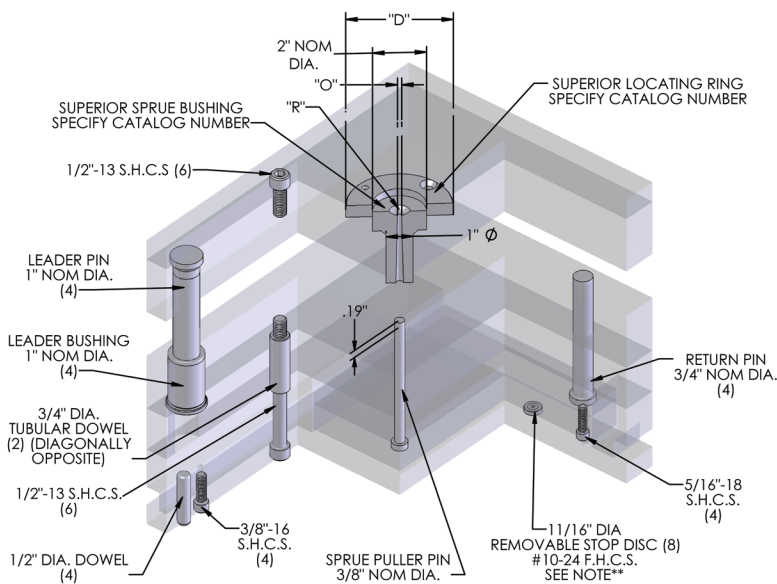


11 7/8" x 15"

1215



+ SEE MOLD BASE SECTION PG. 2110

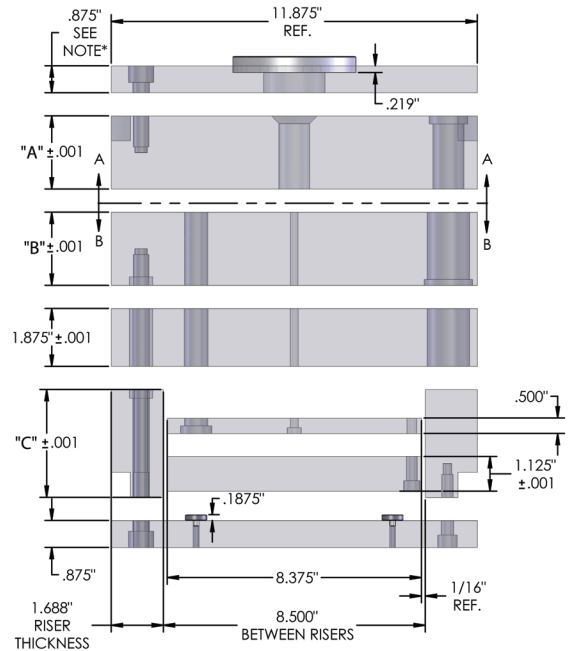


ISOMETRIC SECTION VIEW

*1 3/8" TOP PLATE AVAILABLE

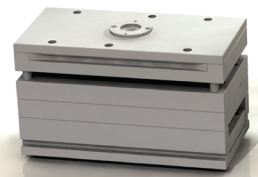
*PRESS FIT STOP PIN AVAILABLE ON REQUEST

SEE CLAMP SLOT OPTIONS PAGE FOR CLAMP SLOT METHOD



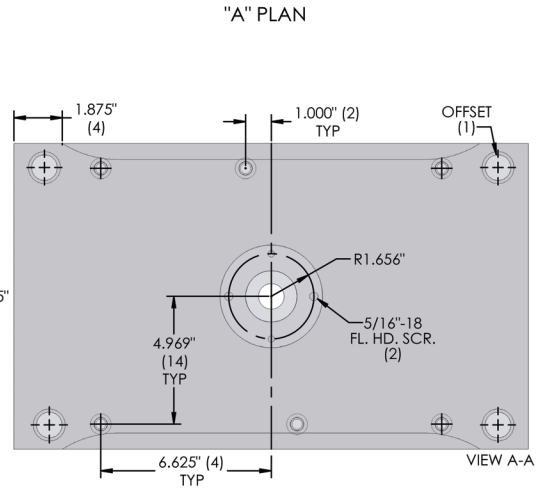
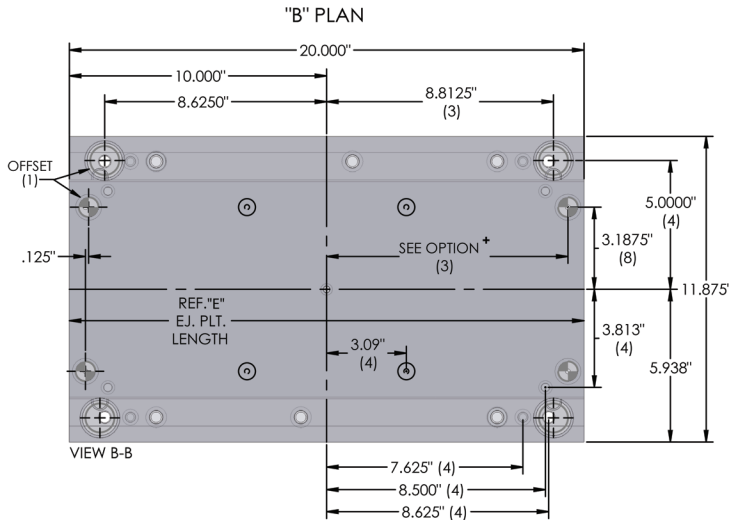
SIDE VIEW

C Height	3.000	3.500	4.000	4.500	5.000	6.000
Stroke	1.188	1.688	2.188	2.688	3.188	4.188

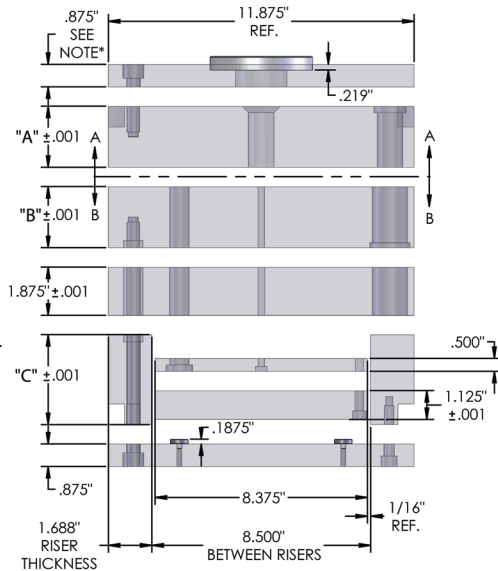
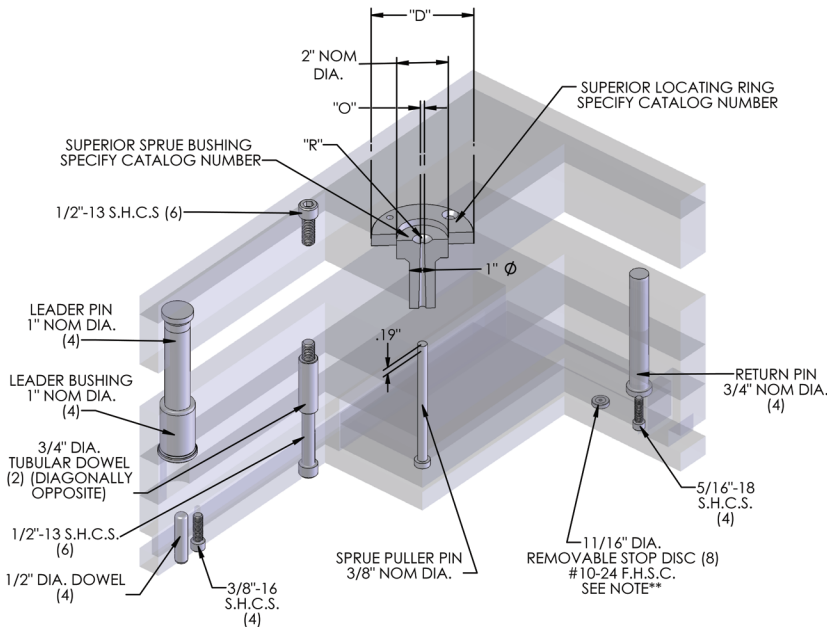


11 7/8" x 20"

1220



+ SEE MOLD BASE SECTION PG. 2110

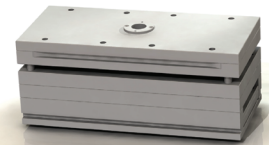


*1 3/8" TCP AVAILABLE

**PRESS FIT STOP PIN AVAILABLE ON REQUEST

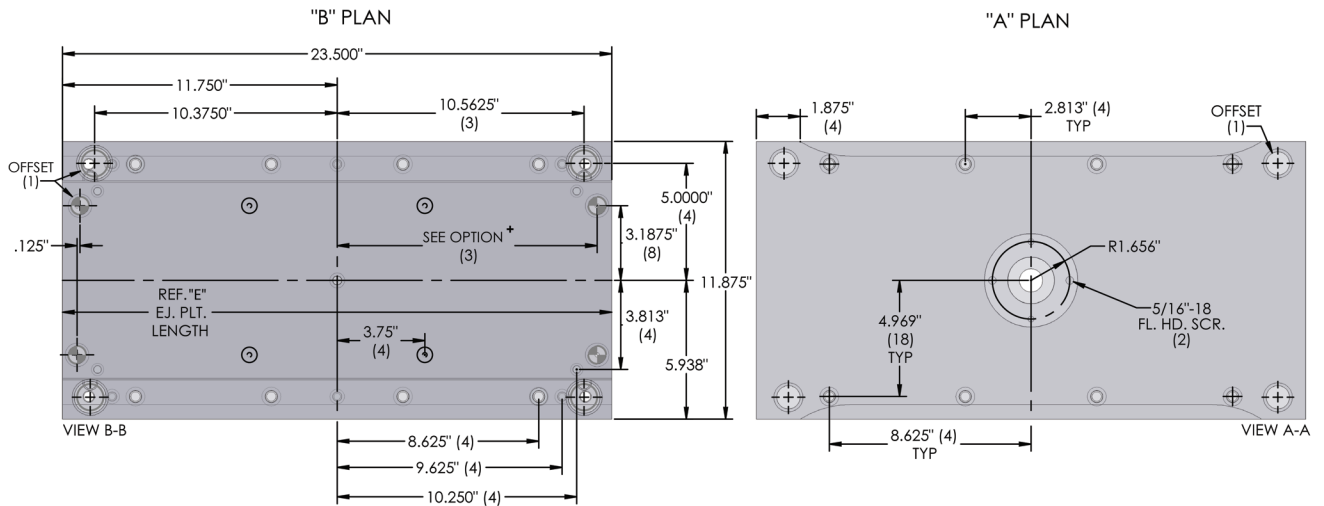
SEE CLAMP SLOT OPTIONS PAGE FOR CLAMP SLOT METHOD

C Height	3.000	3.500	4.000	4.500	5.000	6.000
Stroke	1.188	1.688	2.188	2.688	3.188	4.188

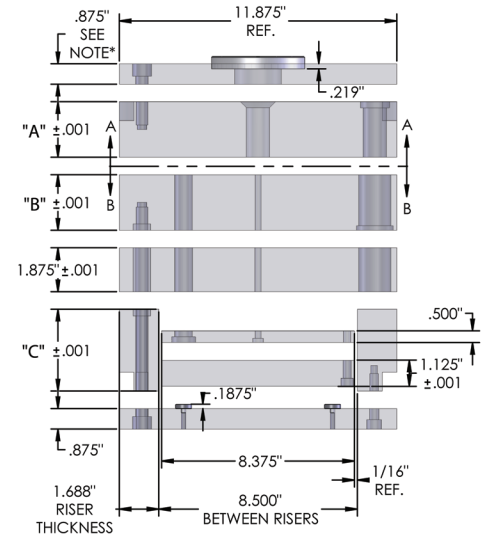
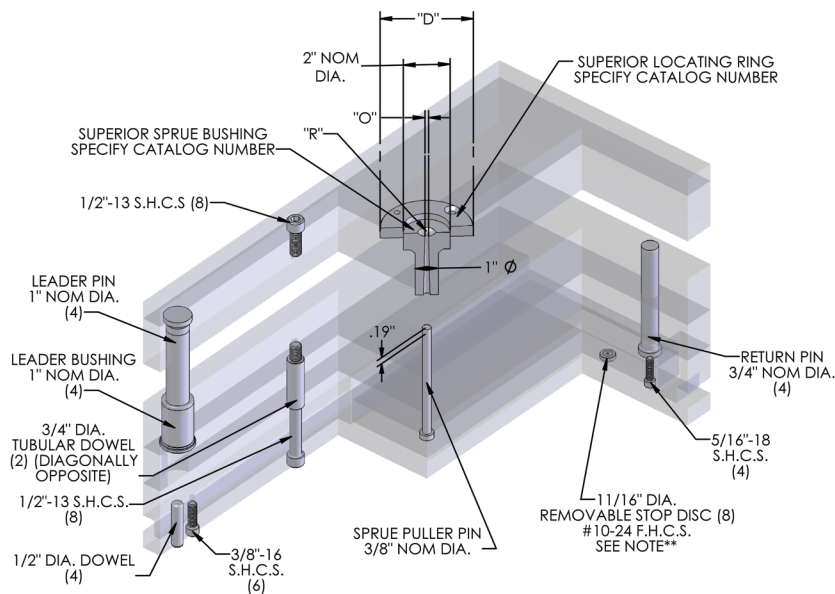


11 7/8" x 23 1/2"

1223



+ SEE MOLD BASE SECTION PG. 2110

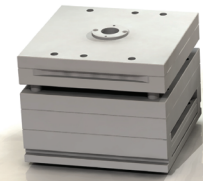


*1 3/8" TCP AVAILABLE

**PRESS FIT STOP PIN AVAILABLE ON REQUEST

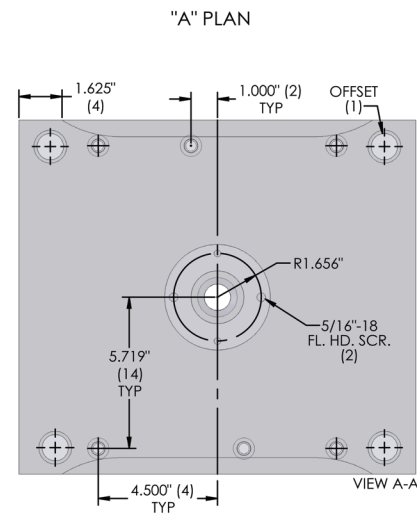
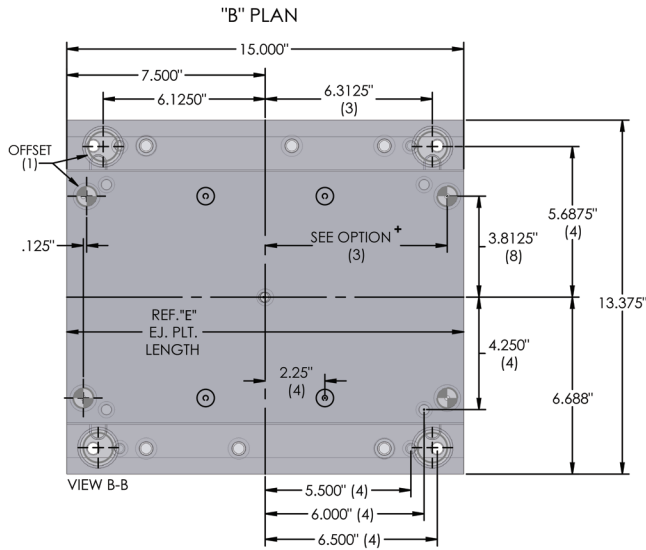
SEE CLAMP SLOT OPTIONS PAGE FOR CLAMP SLOT METHOD

C Height	3.000	3.500	4.000	4.500	5.000	6.000
Stroke	1.188	1.688	2.188	2.688	3.188	4.188

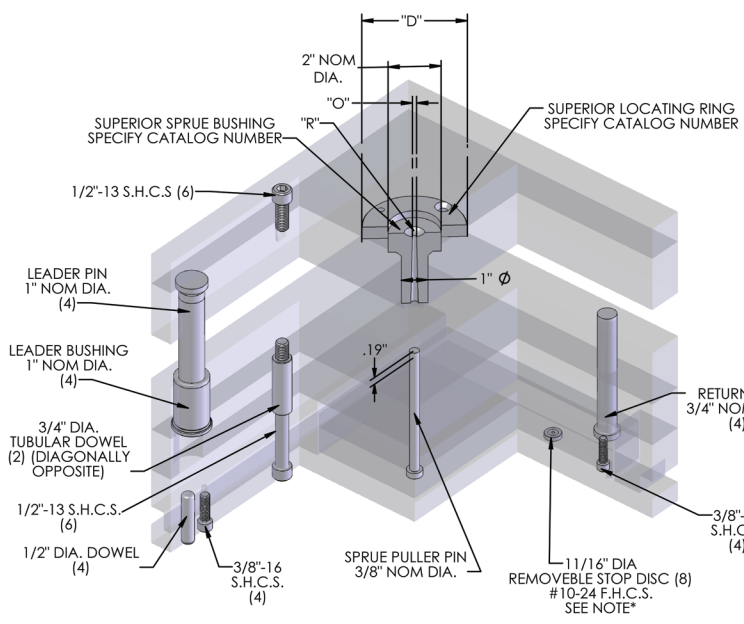


13 3/8" x 15"

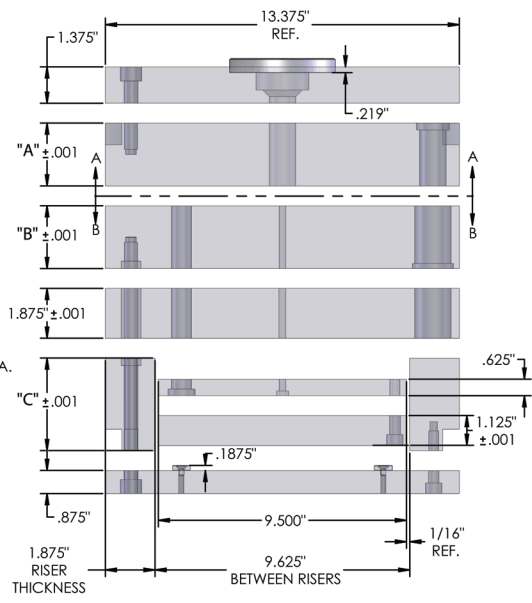
1315



+ SEE MOLD BASE SECTION PG. 2110



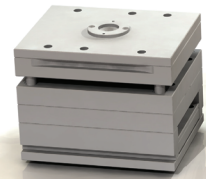
ISOMETRIC SECTION VIEW



SIDE VIEW

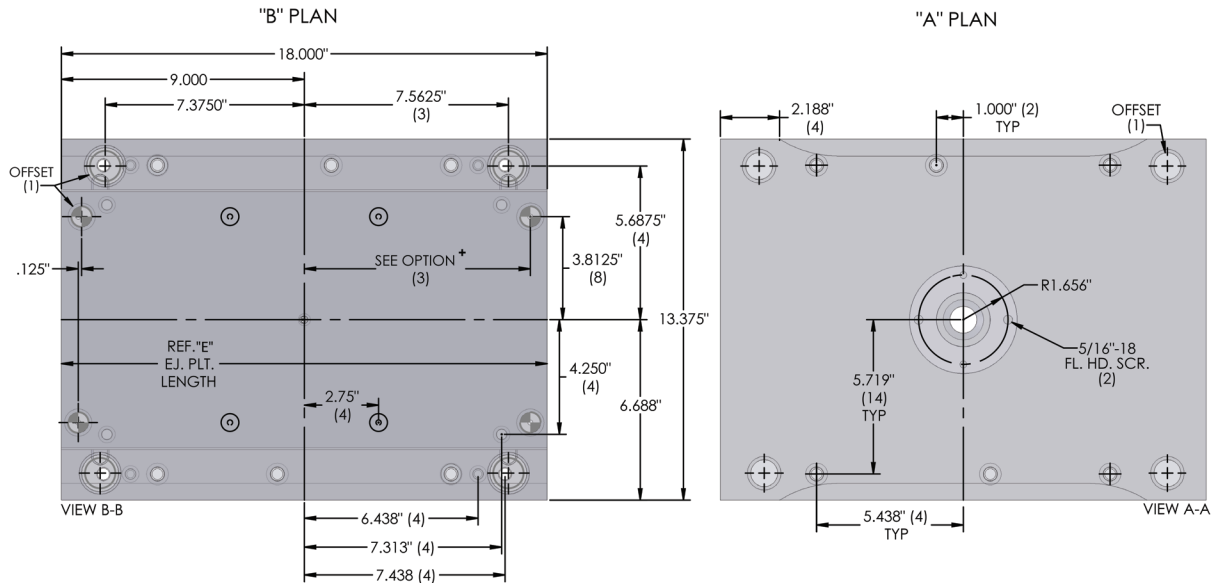
*PRESS FIT STOP PIN
AVAILABLE ON REQUEST
SEE CLAMP SLOT OPTIONS
PAGE FOR CLAMP SLOT
METHOD

C Height	3.000	3.500	4.000	4.500	5.000	6.000
Stroke	1.063	1.563	2.063	2.563	3.063	4.063

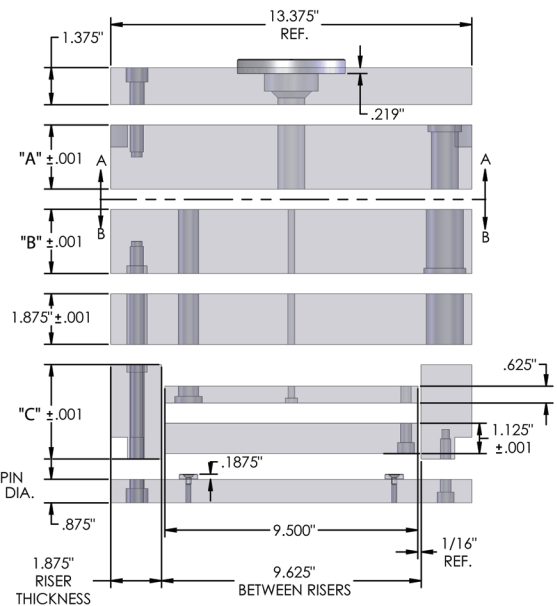
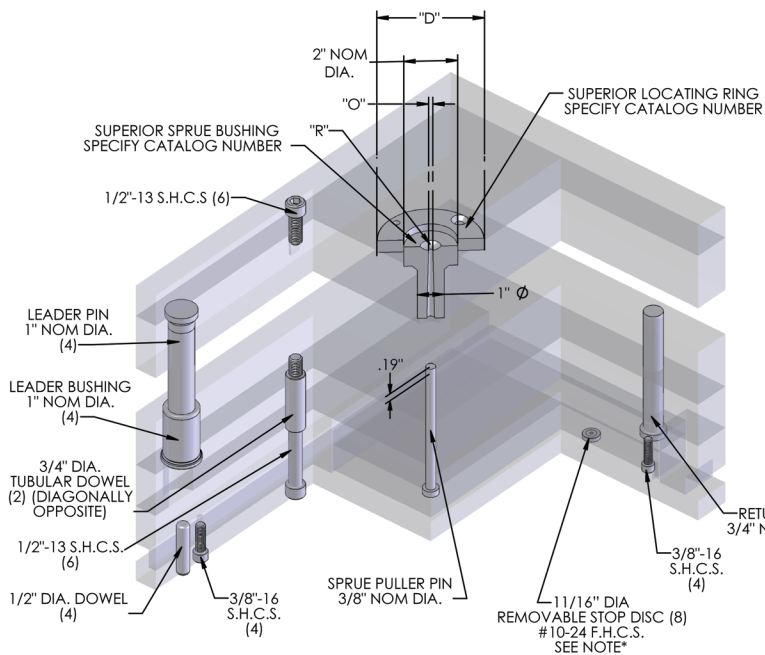


13 3/8" x 18"

1318



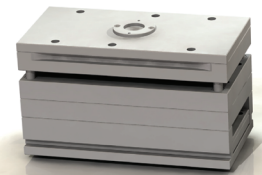
SEE MOLD BASE SECTION PG. 2110



*PRESS FIT STOP PIN AVAILABLE ON REQUEST

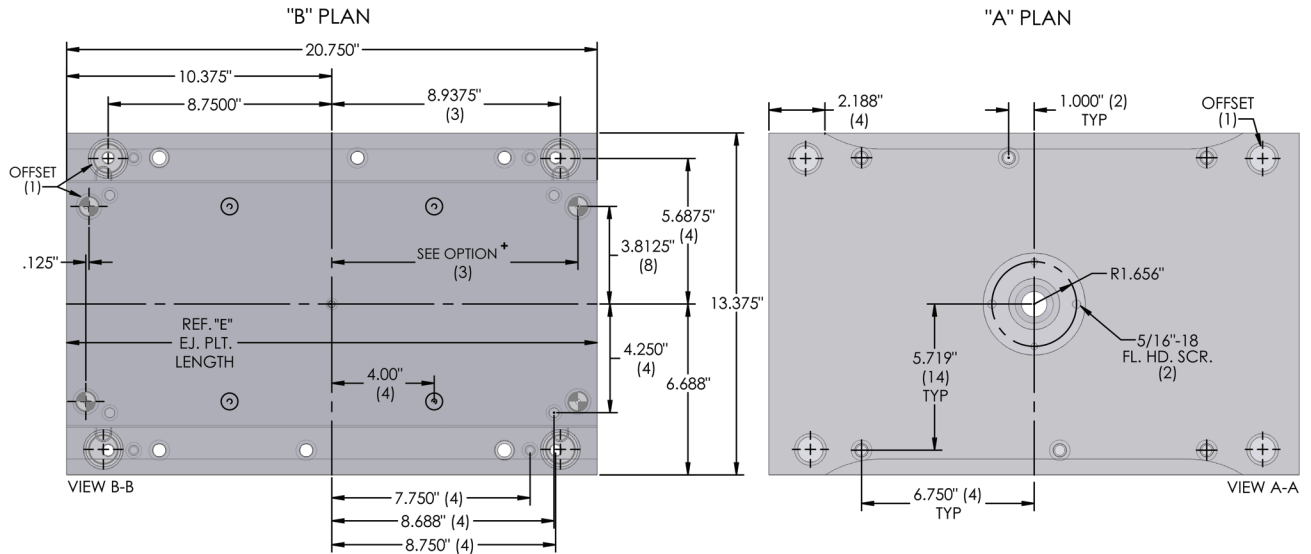
SEE CLAMP SLOT OPTIONS PAGE FOR CLAMP SLOT METHOD

C Height	3.000	3.500	4.000	4.500	5.000	6.000
Stroke	1.063	1.563	2.063	2.563	3.063	4.063

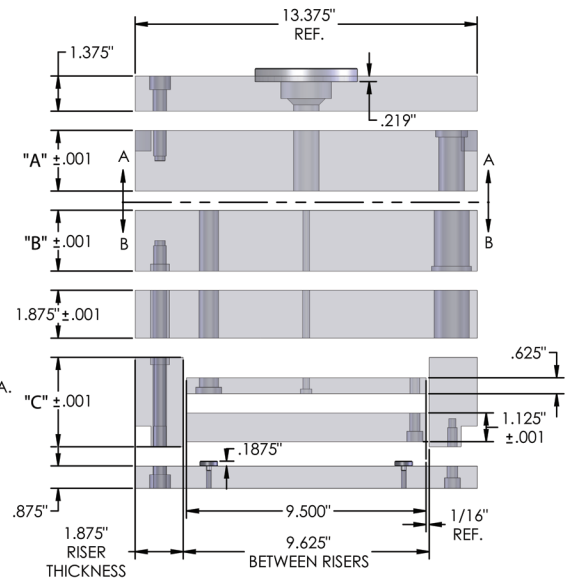
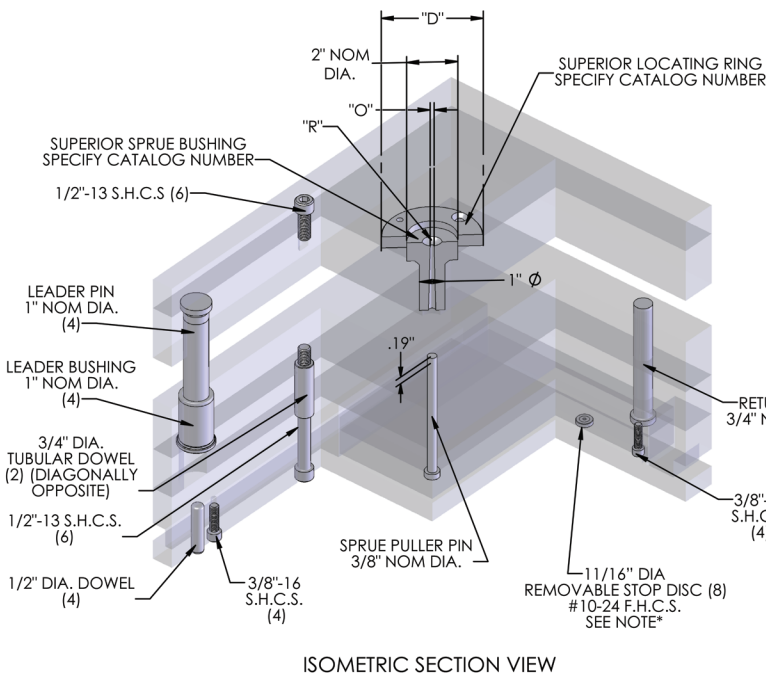


13 3/8" x 20 3/4"

1321



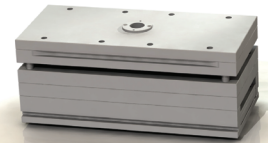
+ SEE MOLD BASE SECTION PG. 2110



*PRESS FIT STOP PIN AVAILABLE ON REQUEST

SEE CLAMP SLOT OPTIONS PAGE FOR CLAMP SLOT METHOD

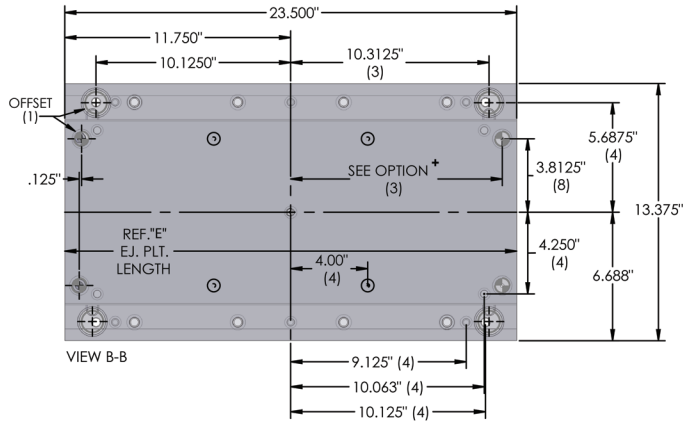
C Height	3.000	3.500	4.000	4.500	5.000	6.000
Stroke	1.063	1.563	2.063	2.563	3.063	4.063



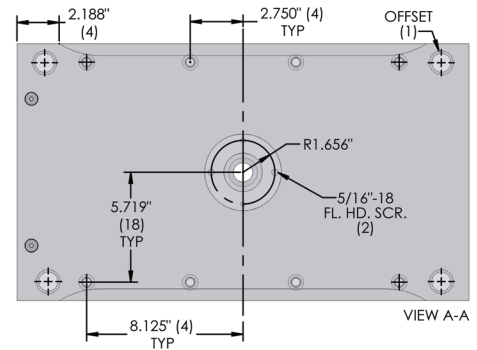
13 3/8" x 23 1/2"

I323

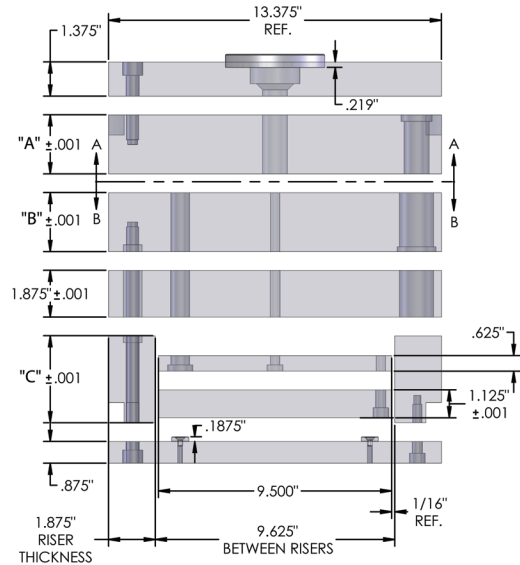
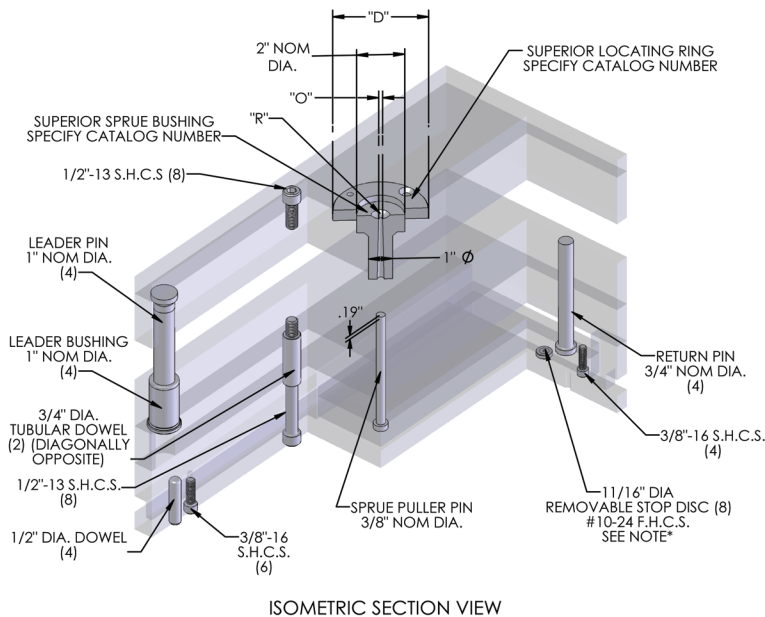
"B" PLAN



"A" PLAN



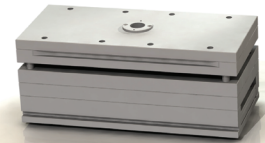
+ SEE MOLD BASE SECTION PG. 2110



*PRESS FIT STOP PIN AVAILABLE ON REQUEST

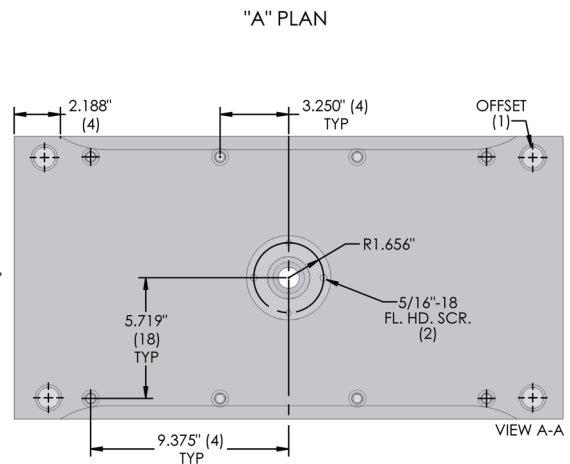
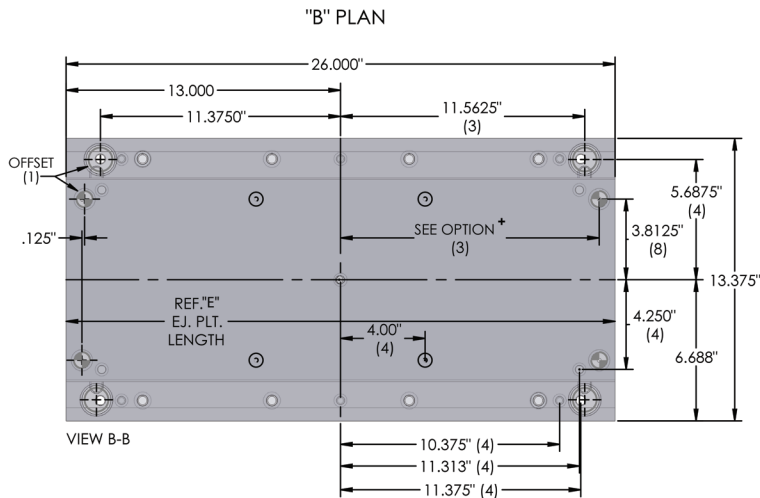
SEE CLAMP SLOT OPTIONS PAGE FOR CLAMP SLOT METHOD

C Height	3.000	3.500	4.000	4.500	5.000	6.000
Stroke	1.063	1.563	2.063	2.563	3.063	4.063

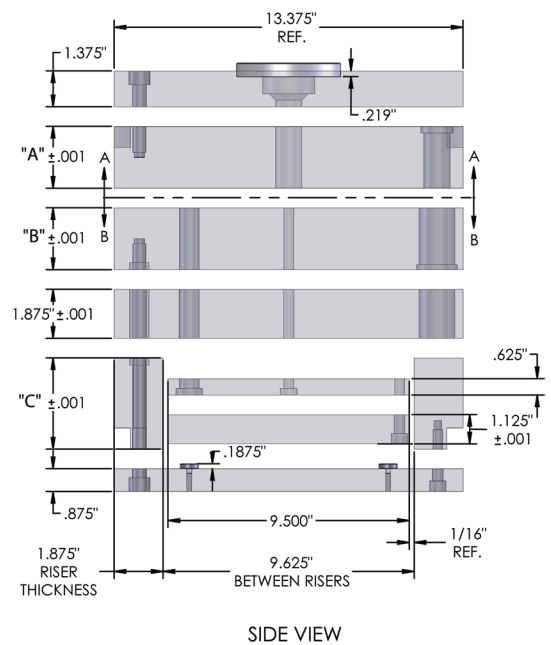
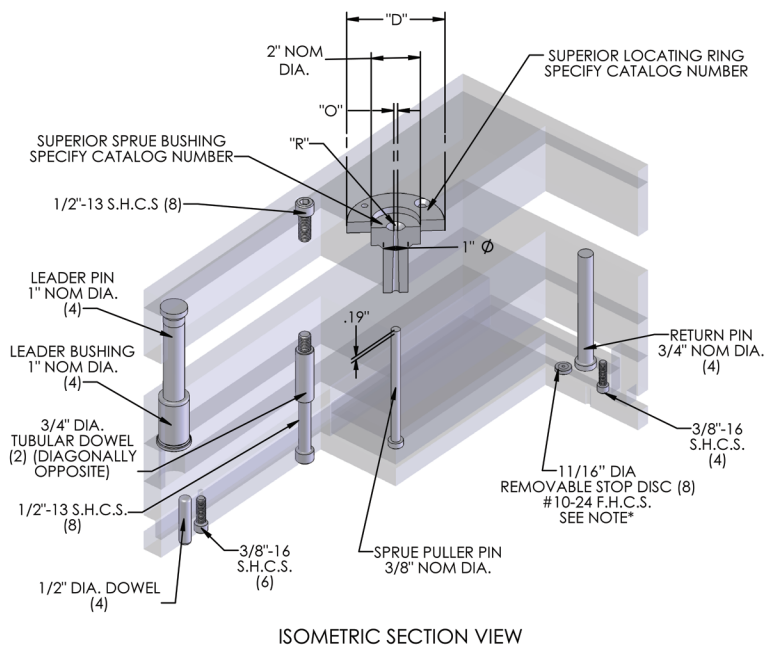


13 3/8" x 26"

1326



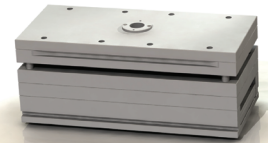
+ SEE MOLD BASE SECTION PG. 2110



*PRESS FIT STOP PIN AVAILABLE ON REQUEST

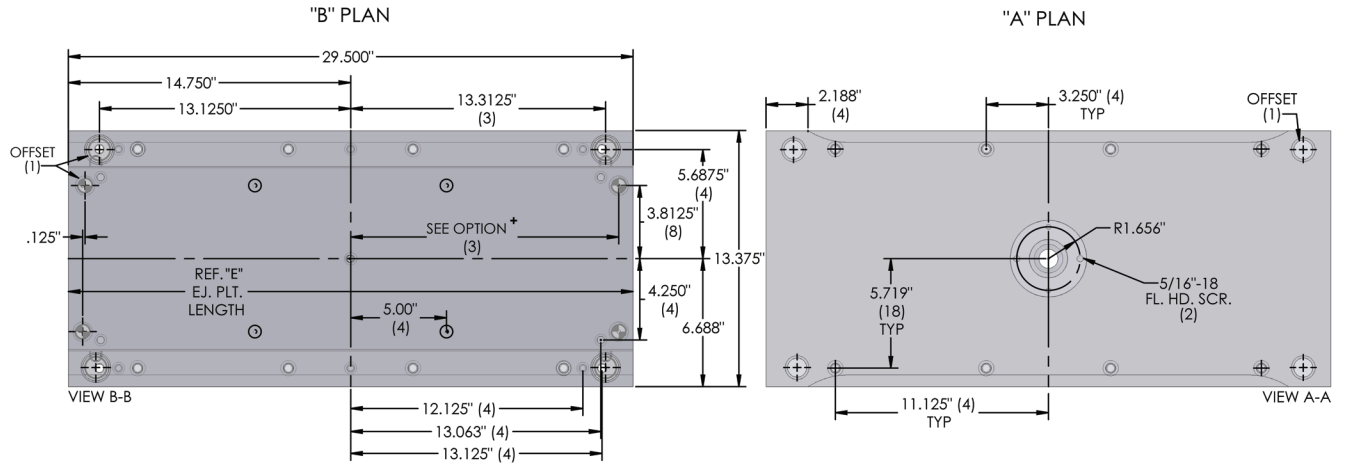
SEE CLAMP SLOT OPTIONS PAGE FOR CLAMP SLOT METHOD

C Height	3.000	3.500	4.000	4.500	5.000	6.000
Stroke	1.063	1.563	2.063	2.563	3.063	4.063

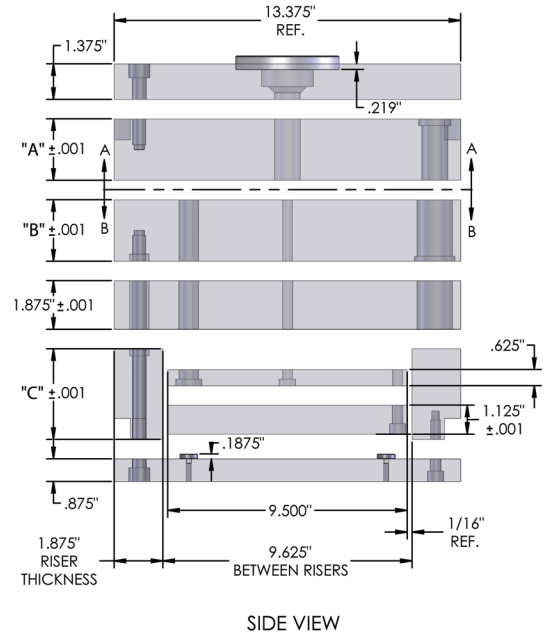
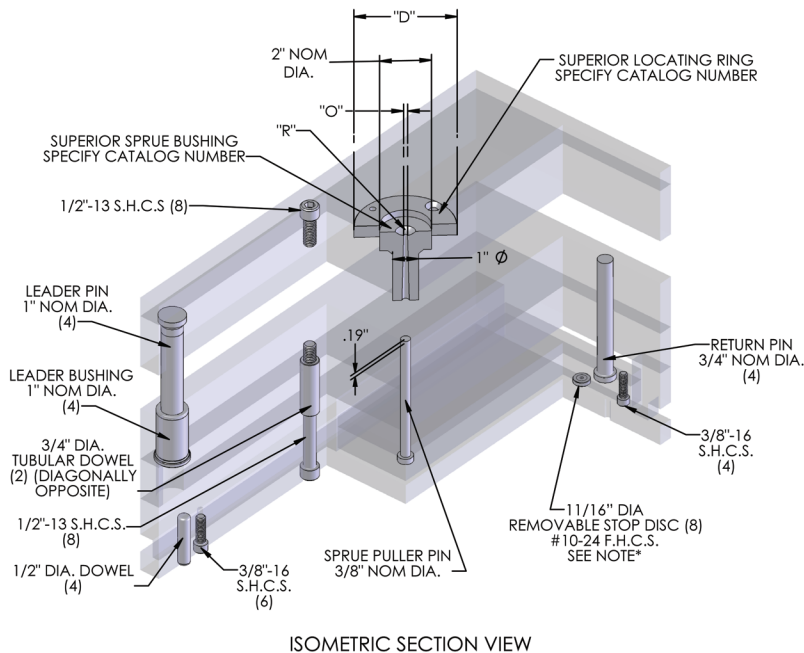


13 3/8" x 29 1/2"

1329

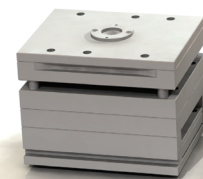


✦ SEE MOLD BASE SECTION PG. 2110



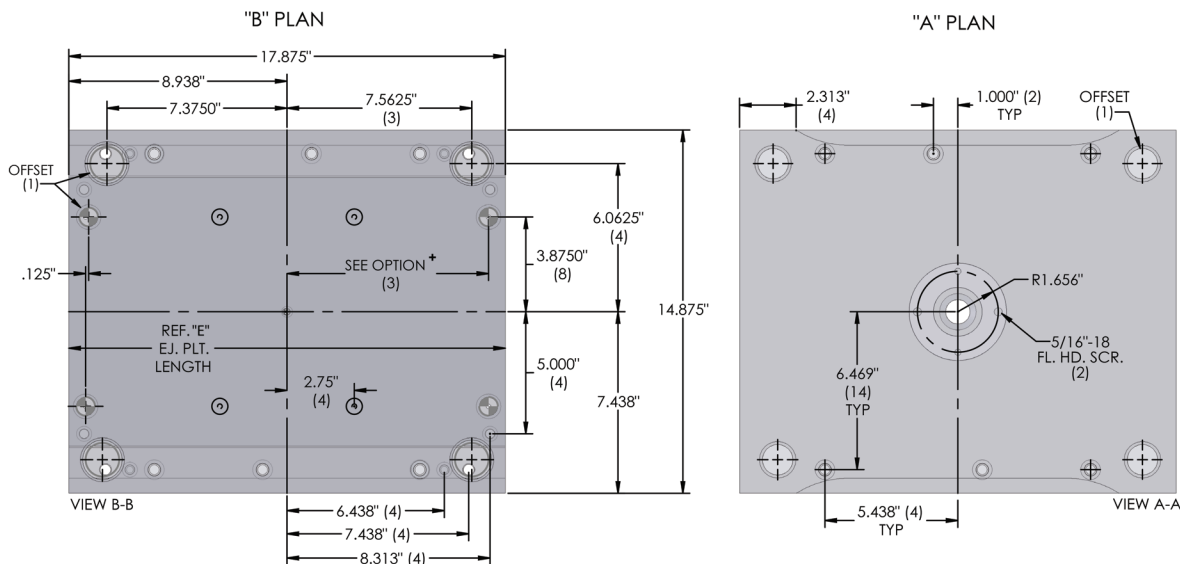
*PRESS FIT STOP PIN AVAILABLE ON REQUEST
SEE CLAMP SLOT OPTIONS PAGE FOR CLAMP SLOT METHOD

C Height	3.000	3.500	4.000	4.500	5.000	6.000
Stroke	1.063	1.563	2.063	2.563	3.063	4.063

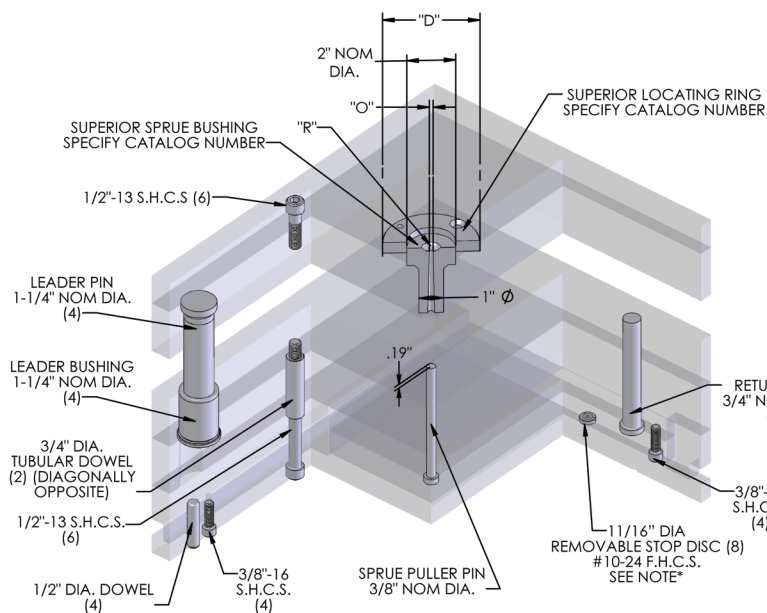


14 7/8" x 17 7/8"

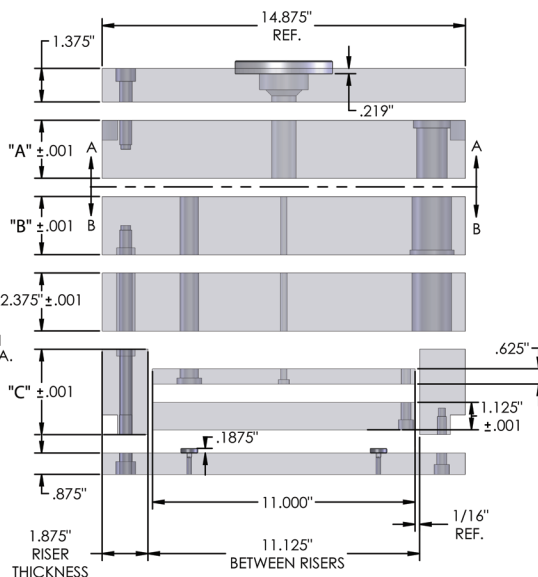
1518



+ SEE MOLD BASE SECTION PG. 2110



ISOMETRIC SECTION VIEW

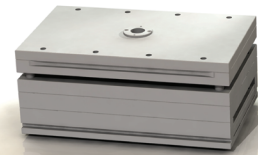


SIDE VIEW

*PRESS FIT STOP PIN AVAILABLE ON REQUEST

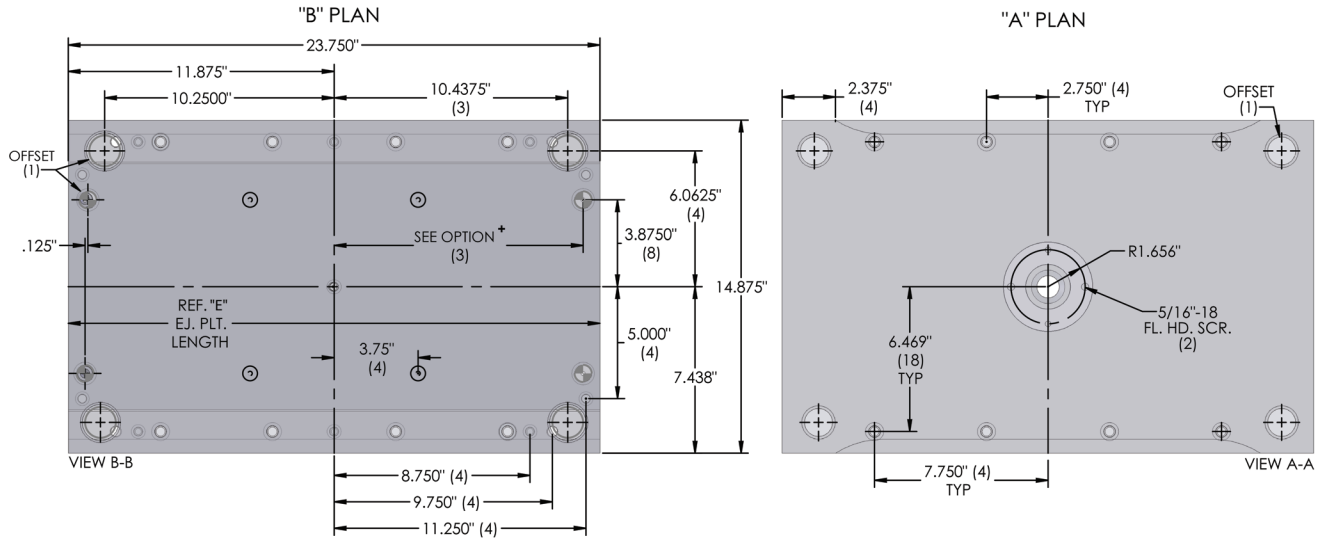
SEE CLAMP SLOT OPTIONS PAGE FOR CLAMP SLOT METHOD

C Height	3.000	3.500	4.000	4.500	5.000	6.000
Stroke	1.063	1.563	2.063	2.563	3.063	4.063

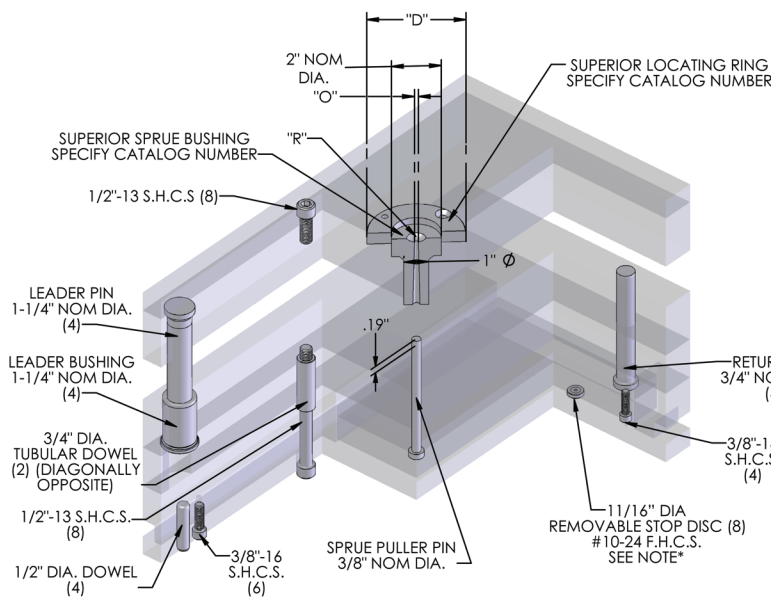


14 7/8" x 23 3/4"

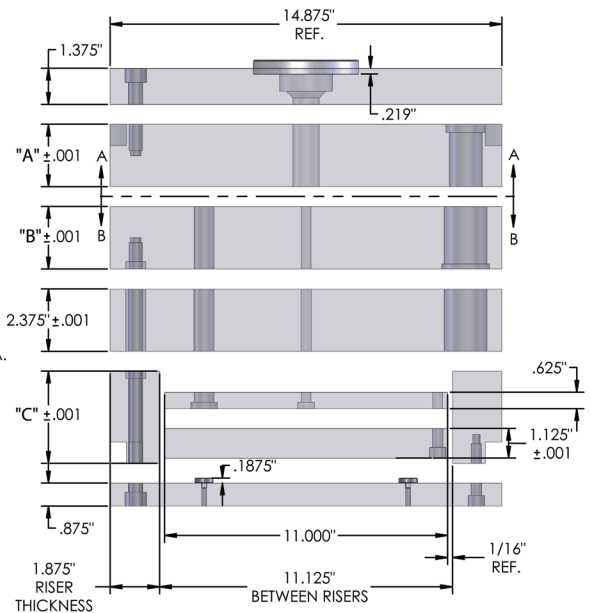
1524



+ SEE MOLD BASE SECTION PG. 2110



ISOMETRIC SECTION VIEW

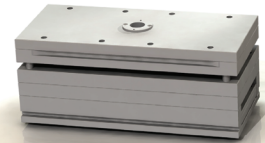


SIDE VIEW

*PRESS FIT STOP PIN AVAILABLE ON REQUEST

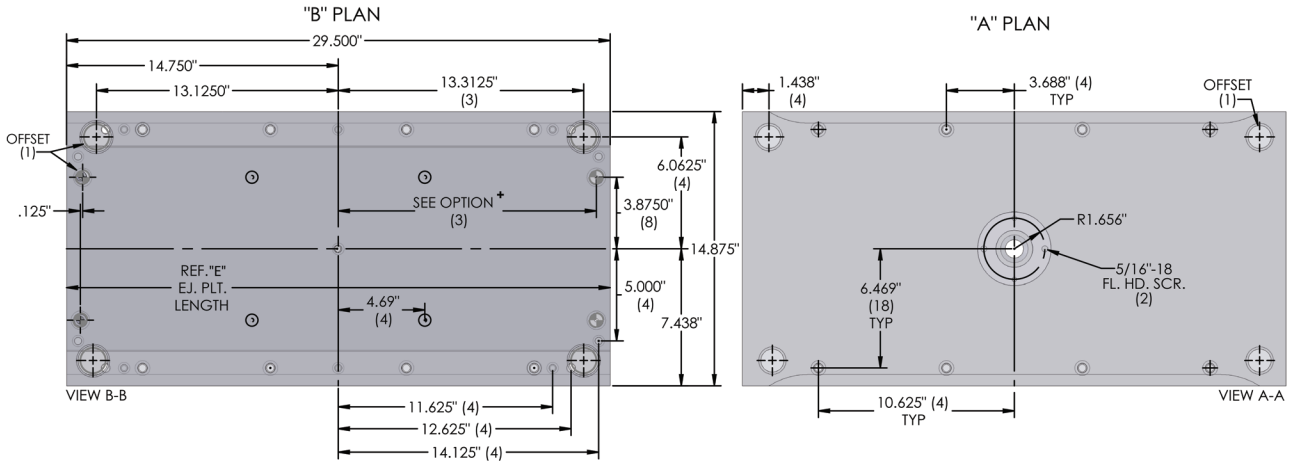
SEE CLAMP SLOT OPTIONS PAGE FOR CLAMP SLOT METHOD

C Height	3.000	3.500	4.000	4.500	5.000	6.000
Stroke	1.063	1.563	2.063	2.563	3.063	4.063

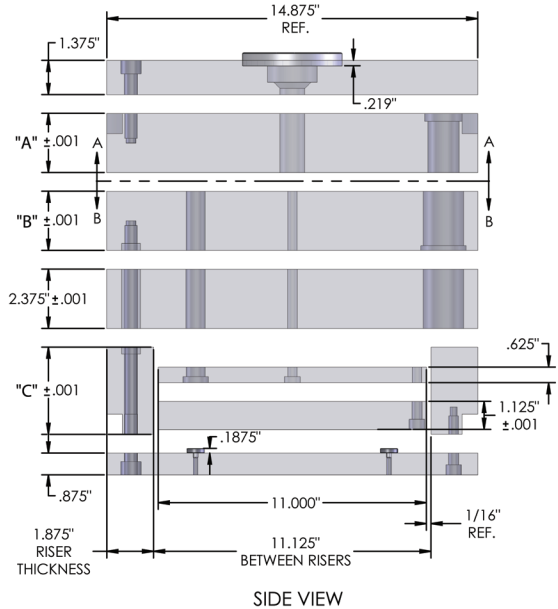
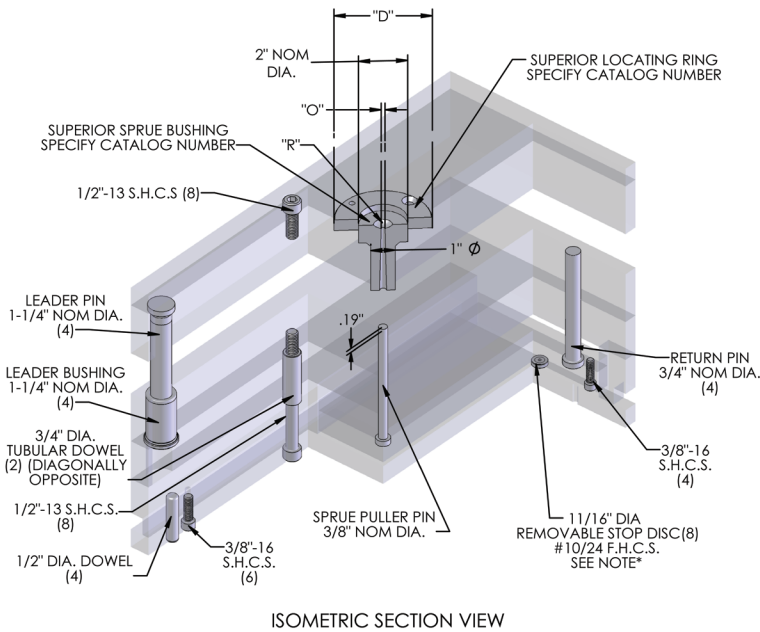


14 7/8" x 29 1/2"

1529



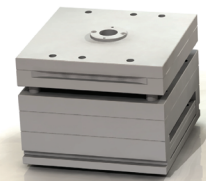
+ SEE MOLD BASE SECTION PG. 2110



*PRESS FIT STOP PIN AVAILABLE ON REQUEST

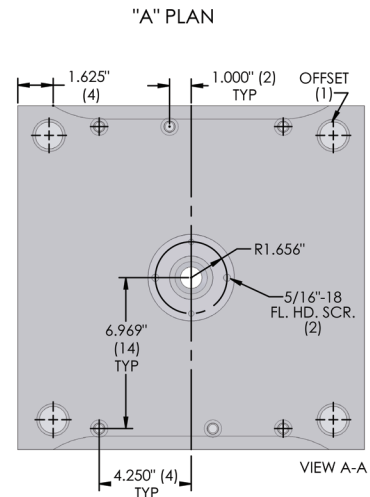
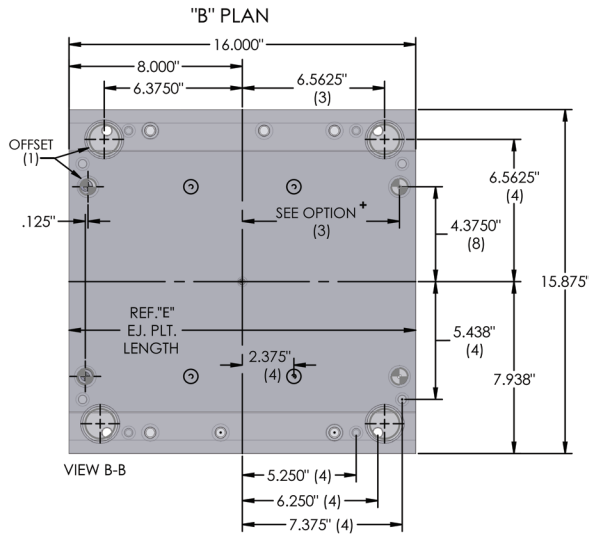
SEE CLAMP SLOT OPTIONS PAGE FOR CLAMP SLOT METHOD

C Height	3.000	3.500	4.000	4.500	5.000	6.000
Stroke	1.063	1.563	2.063	2.563	3.063	4.063

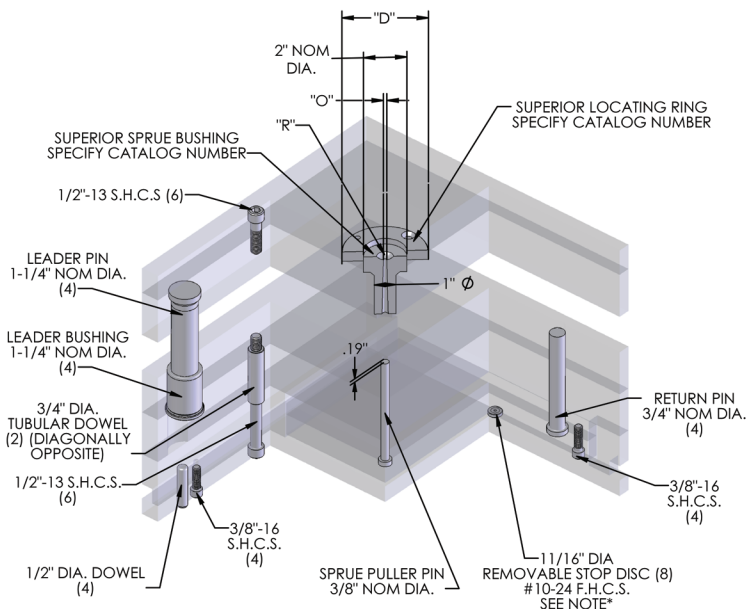


15 7/8" x 16"

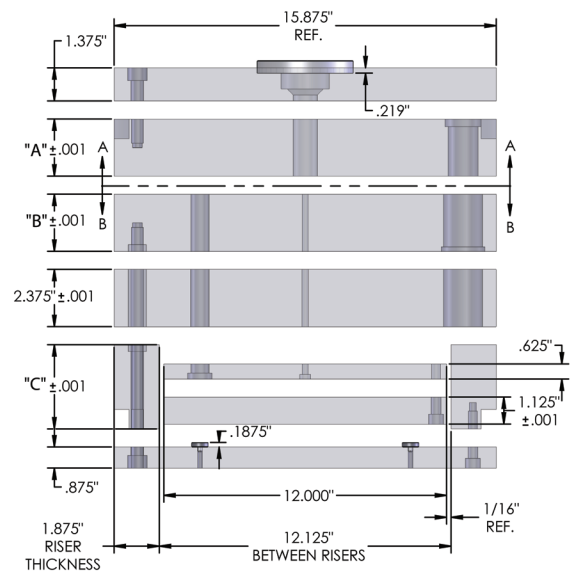
1616



+ SEE MOLD BASE SECTION PG. 2110



ISOMETRIC SECTION VIEW

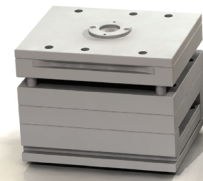


SIDE VIEW

*PRESS FIT STOP PIN
AVAILABLE ON REQUEST

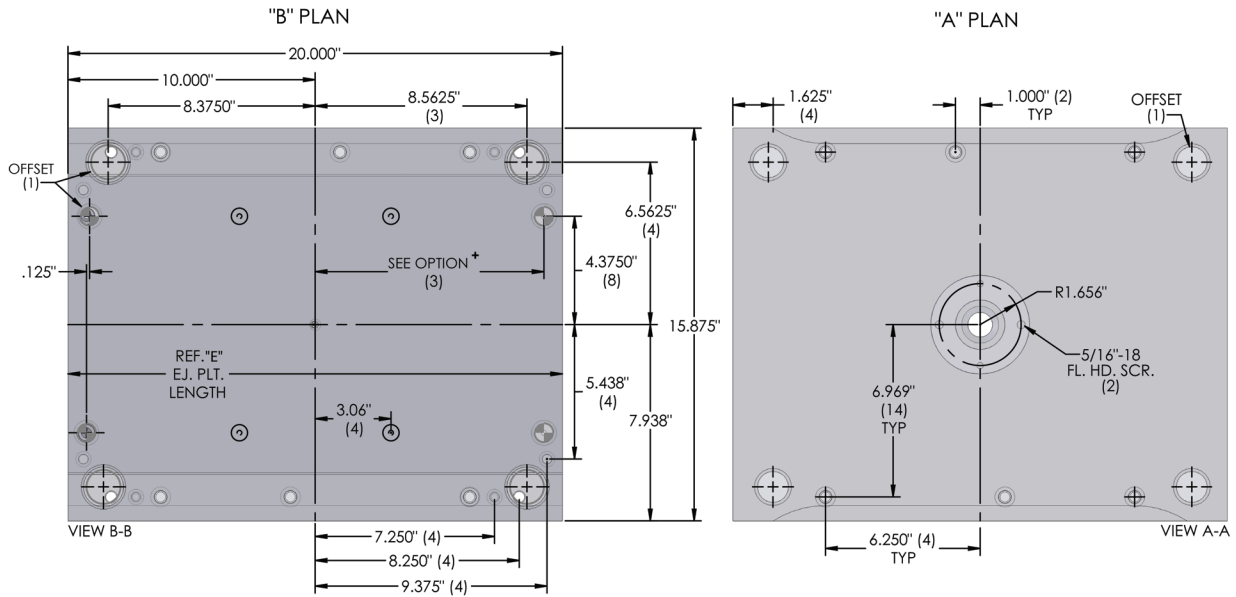
SEE CLAMP SLOT OPTIONS
PAGE FOR CLAMP SLOT
METHOD

C Height	3.000	3.500	4.000	4.500	5.000	6.000
Stroke	1.063	1.563	2.063	2.563	3.063	4.063

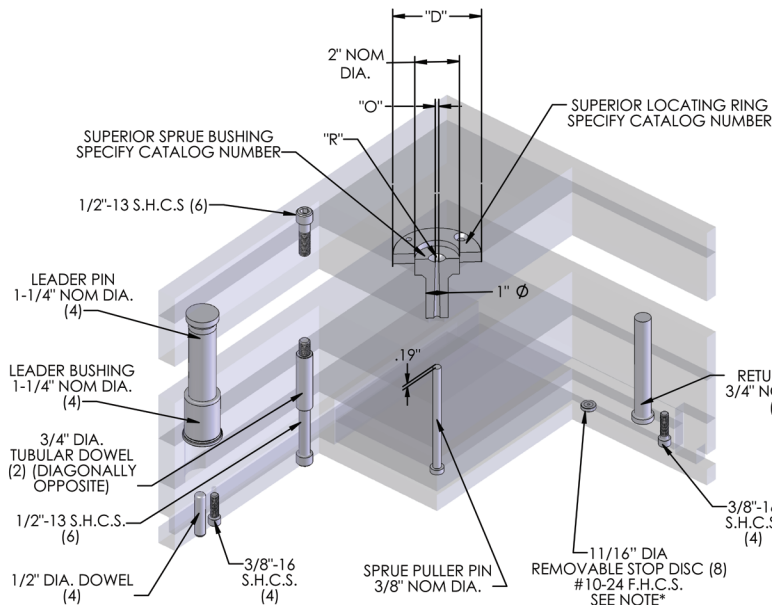


15 7/8" x 20"

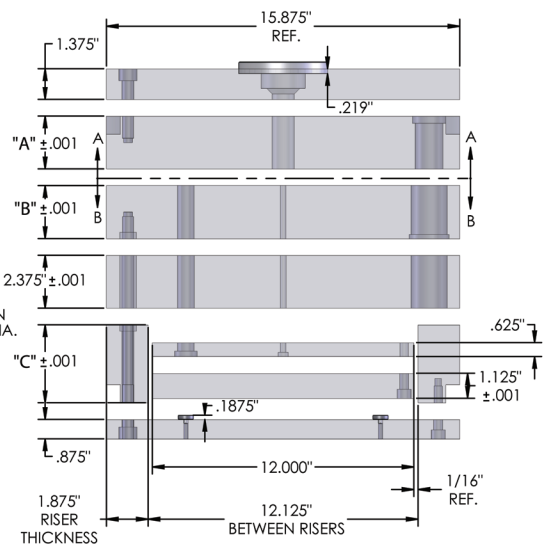
1620



+ SEE MOLD BASE SECTION PG. 2110



ISOMETRIC SECTION VIEW

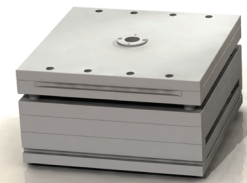


SIDE VIEW

*PRESS FIT STOP PIN AVAILABLE ON REQUEST

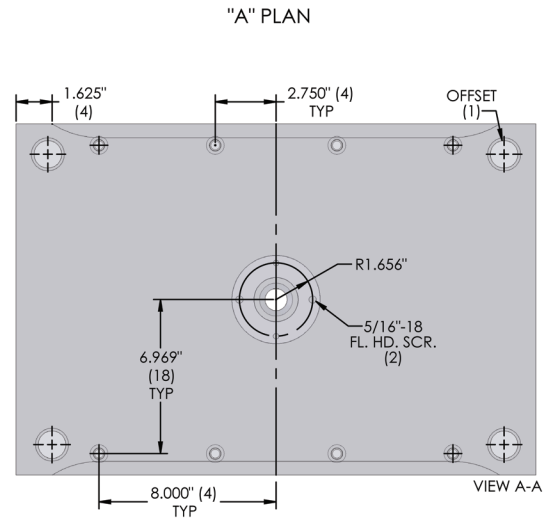
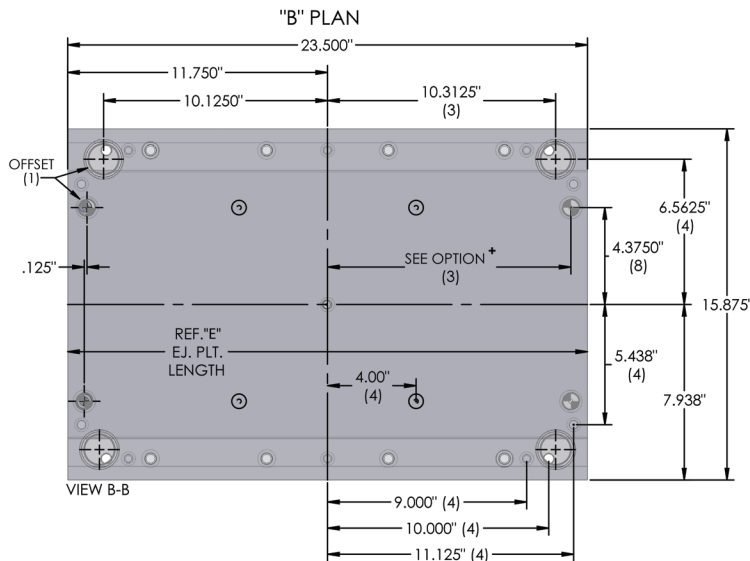
SEE CLAMP SLOT OPTIONS PAGE FOR CLAMP SLOT METHODS

C Height	3.000	3.500	4.000	4.500	5.000	6.000
Stroke	1.063	1.563	2.063	2.563	3.063	4.063

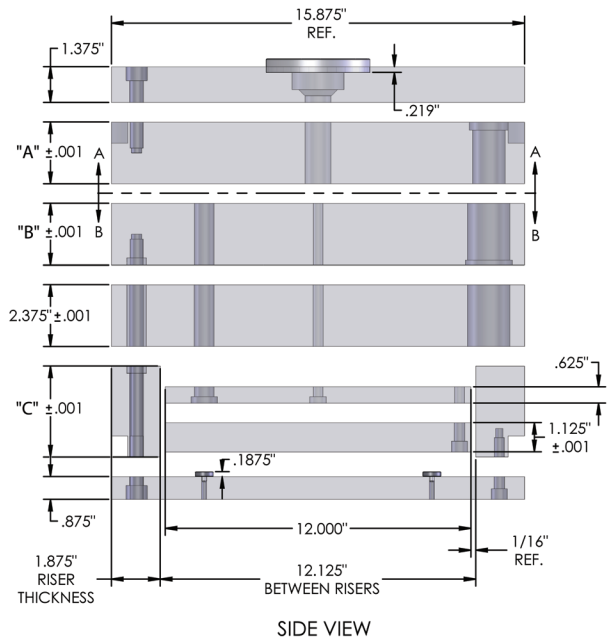
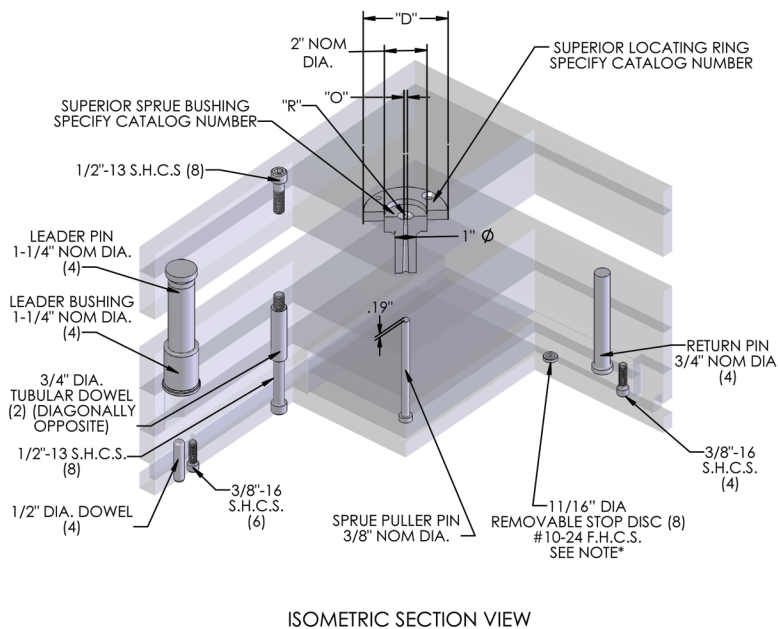


15 7/8" x 23 1/2"

1623



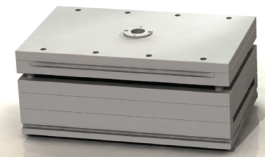
+ SEE MOLD BASE SECTION PG. 2110



*PRESS FIT STOP PIN AVAILABLE ON REQUEST

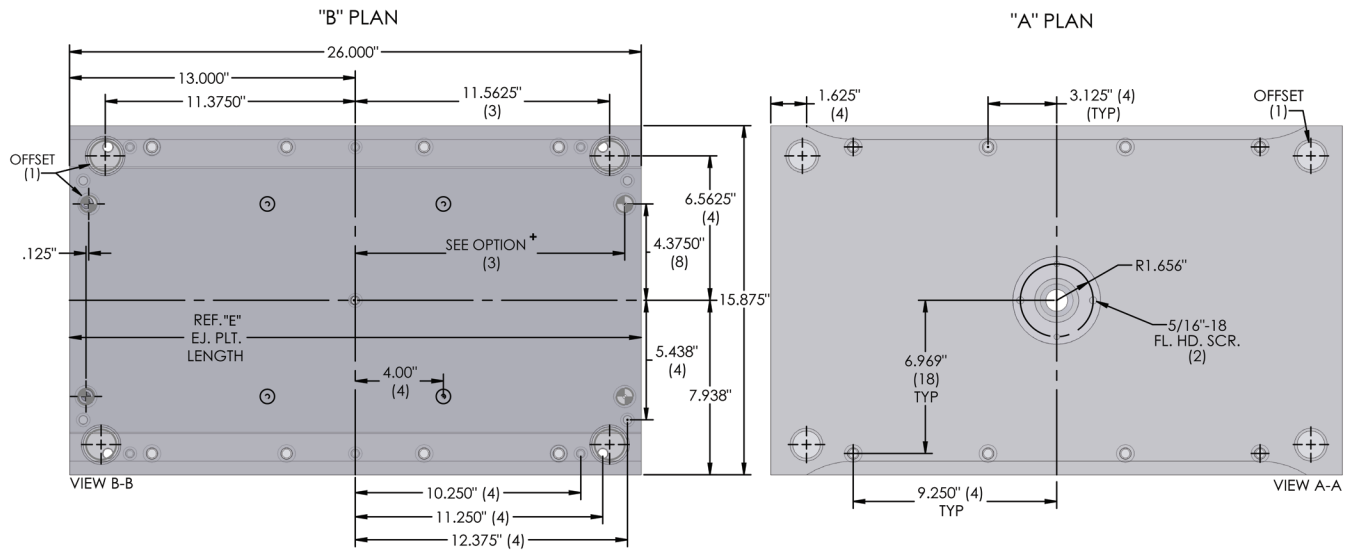
SEE CLAMP SLOT OPTIONS PAGE FOR CLAMP SLOT METHOD

C Height	3.000	3.500	4.000	4.500	5.000	6.000
Stroke	1.063	1.563	2.063	2.563	3.063	4.063

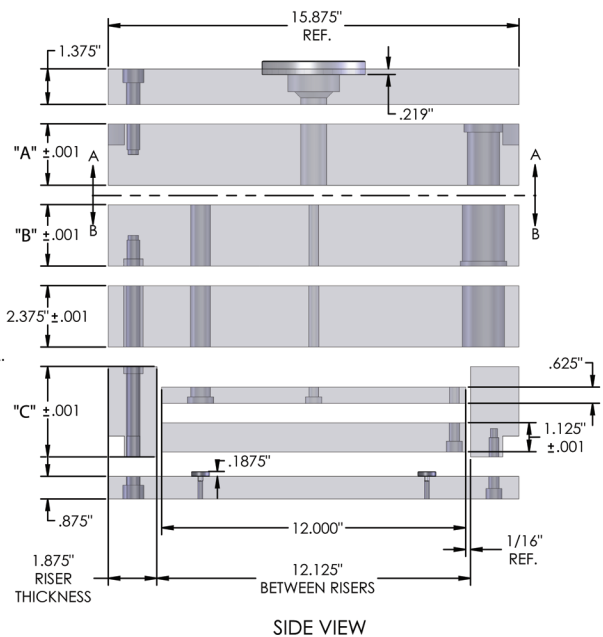
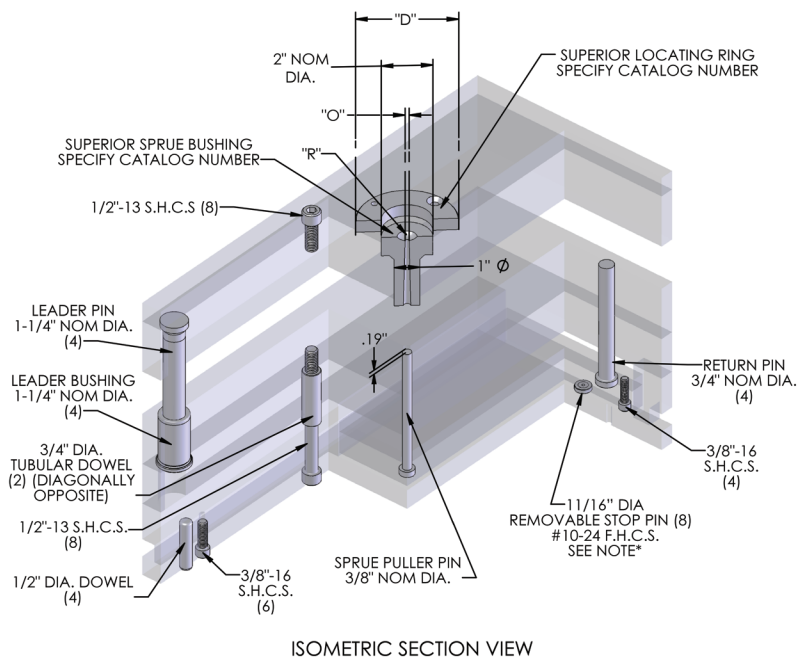


15 7/8" x 26"

1626



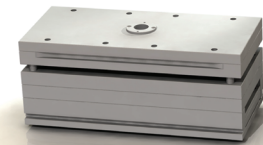
+ SEE MOLD BASE SECTION PG. 2110



*PRESS FIT STOP PIN AVAILABLE ON REQUEST

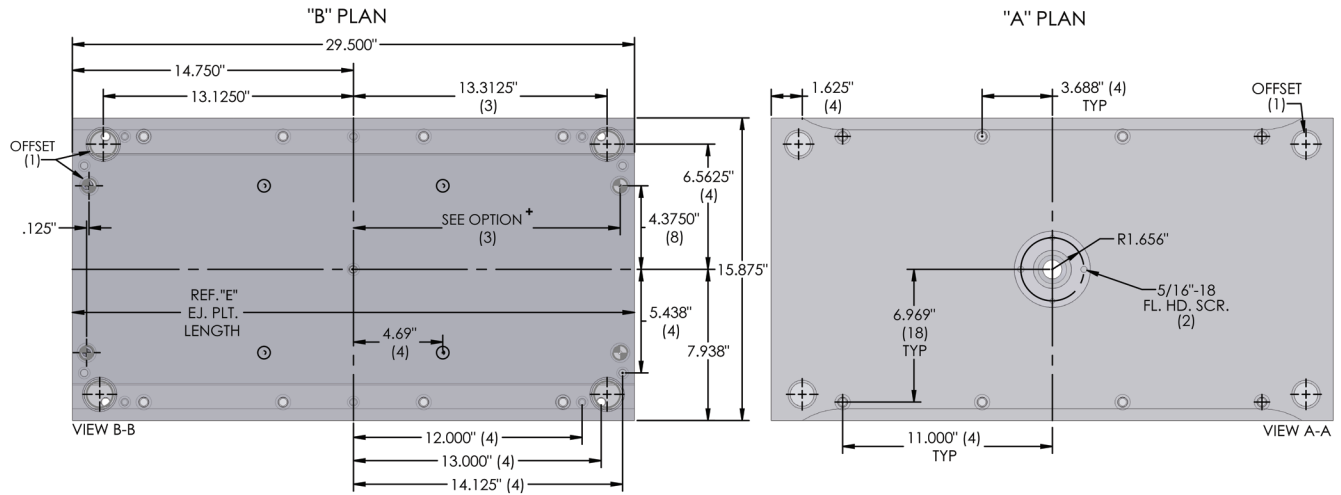
SEE CLAMP SLOT OPTIONS PAGE FOR CLAMP SLOT CONFIGURATIONS

C Height	3.000	3.500	4.000	4.500	5.000	6.000
Stroke	1.063	1.563	2.063	2.563	3.063	4.063

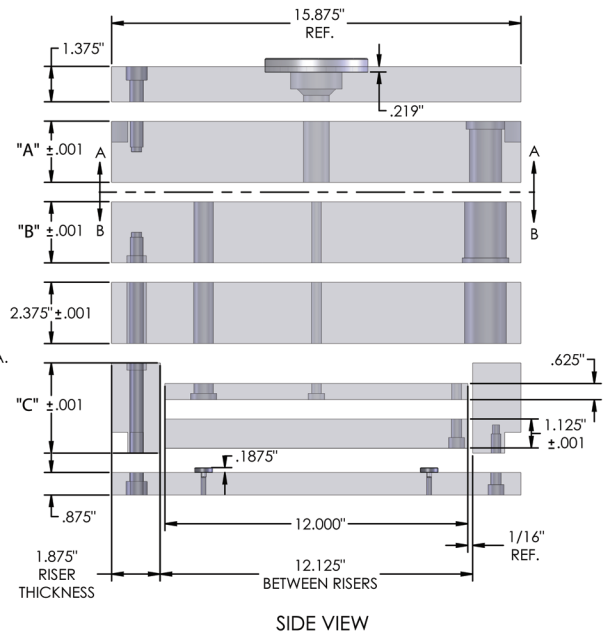
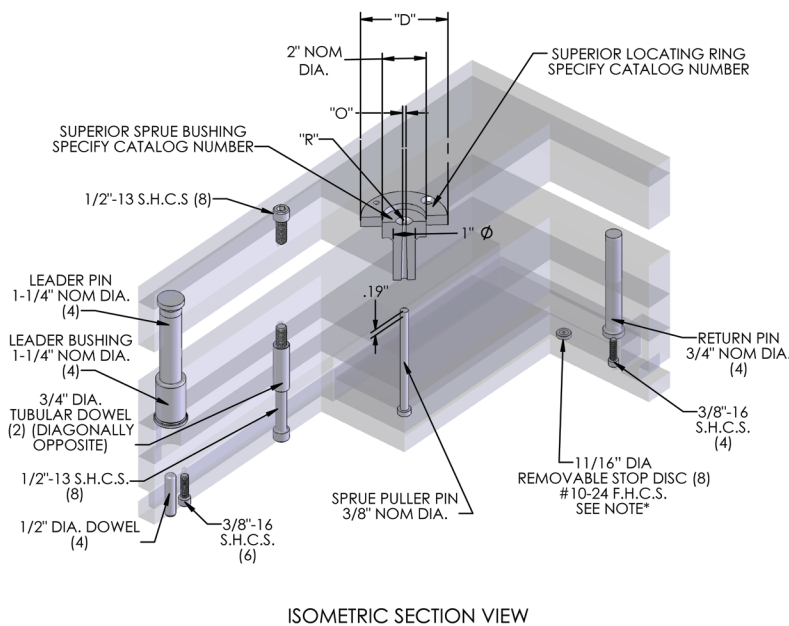


15 7/8" x 29 1/2"

1629



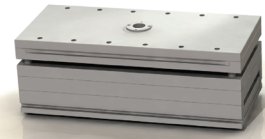
+ SEE MOLD BASE SECTION PG. 2110



*PRESS FIT STOP PIN AVAILABLE ON REQUEST

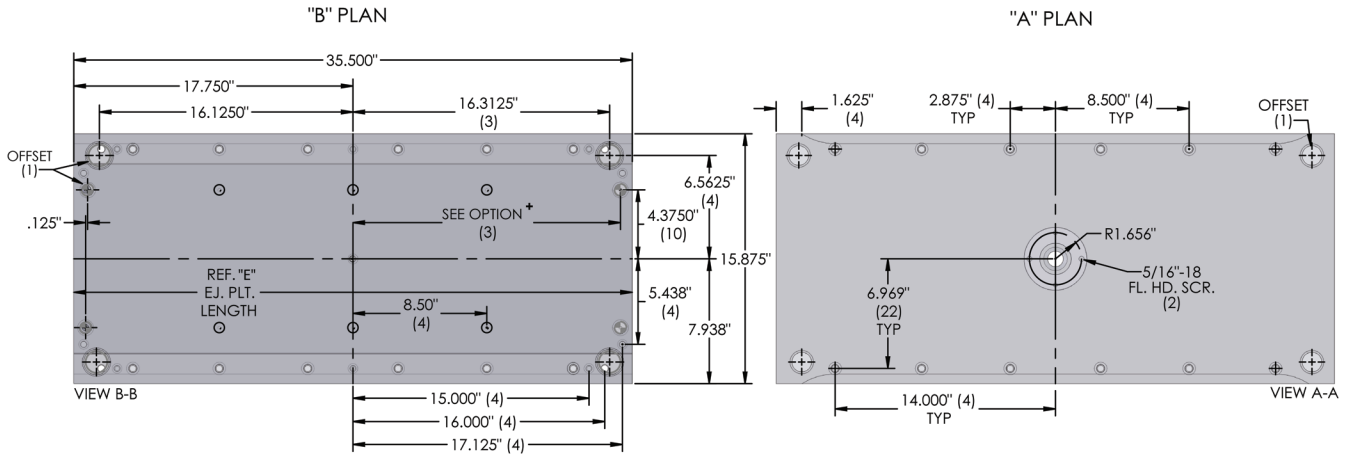
SEE CLAMP SLOT OPTIONS PAGE FOR CLAMP SLOT METHOD

C Height	3.000	3.500	4.000	4.500	5.000	6.000
Stroke	1.063	1.563	2.063	2.563	3.063	4.063

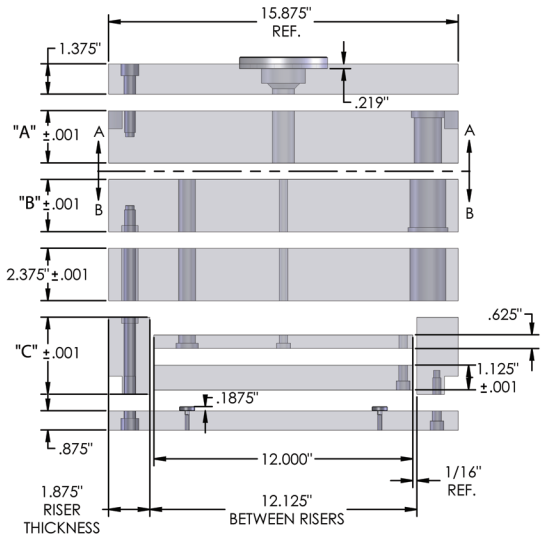
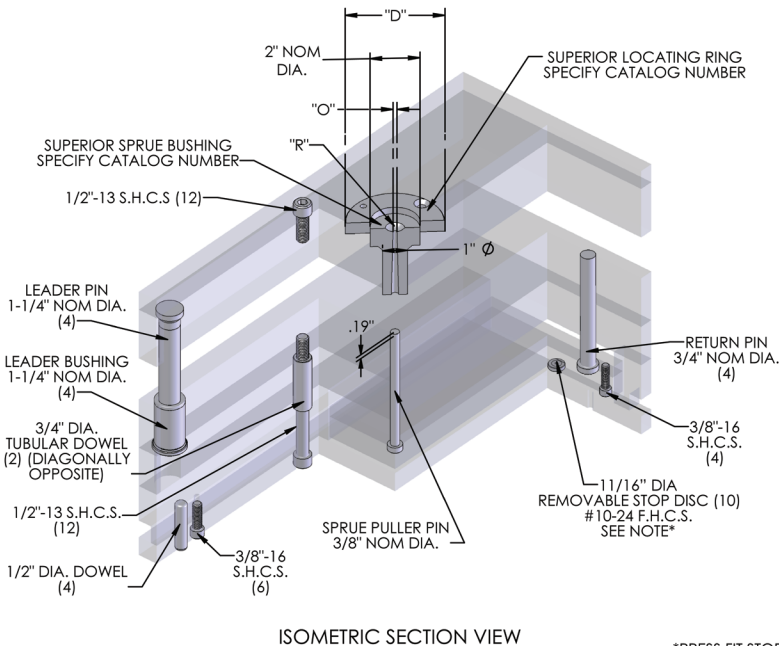


15 7/8" x 35 1/2"

1635



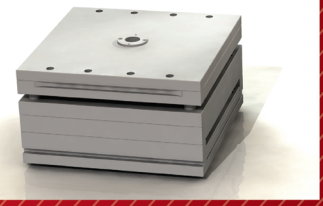
✦ SEE MOLD BASE SECTION PG. 2110



*PRESS FIT STOP PIN AVAILABLE ON REQUEST

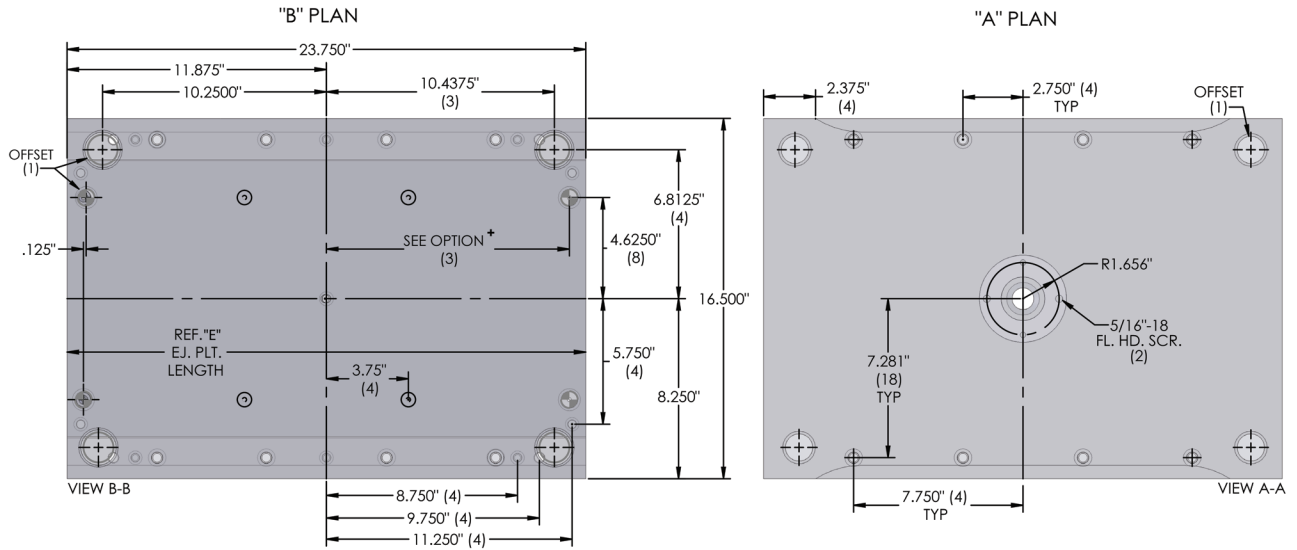
SEE CLAMP SLOT OPTIONS PAGE FOR CLAMP SLOT METHOD

C Height	3.000	3.500	4.000	4.500	5.000	6.000
Stroke	1.063	1.563	2.063	2.563	3.063	4.063

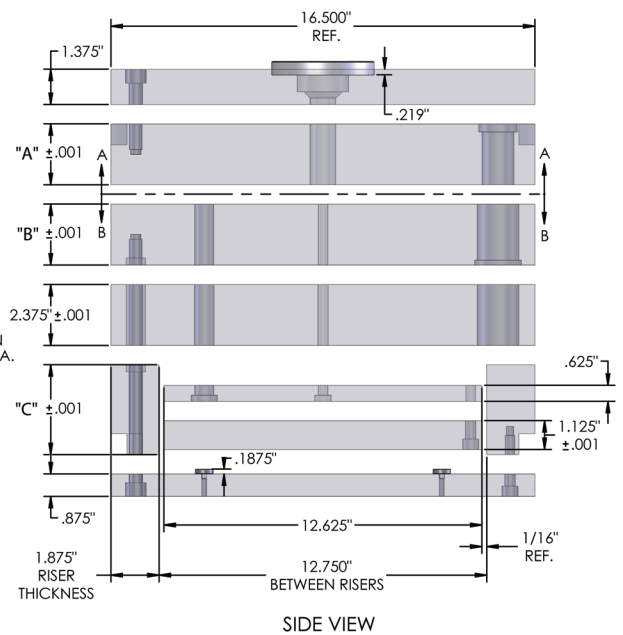
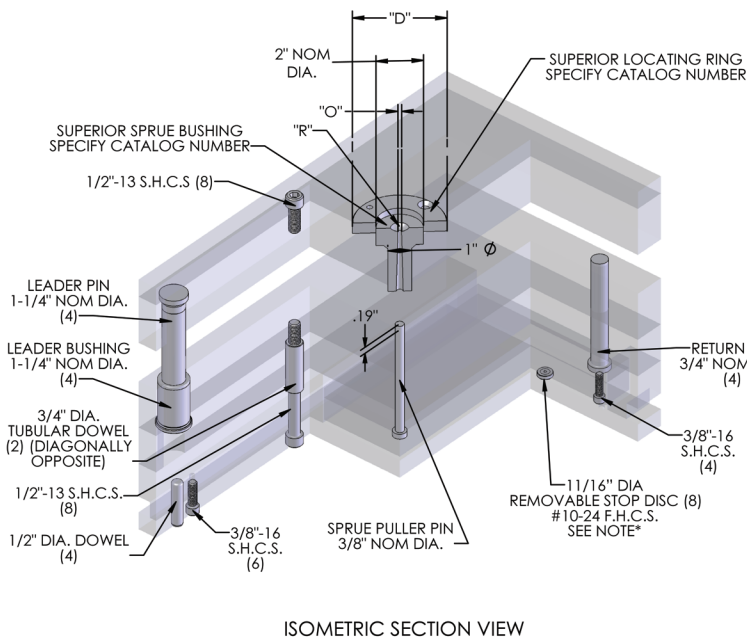


16 1/2" x 23 3/4"

1724



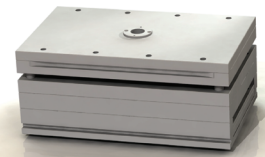
+ SEE MOLD BASE SECTION PG. 2110



*PRESS FIT STOP PIN AVAILABLE ON REQUEST

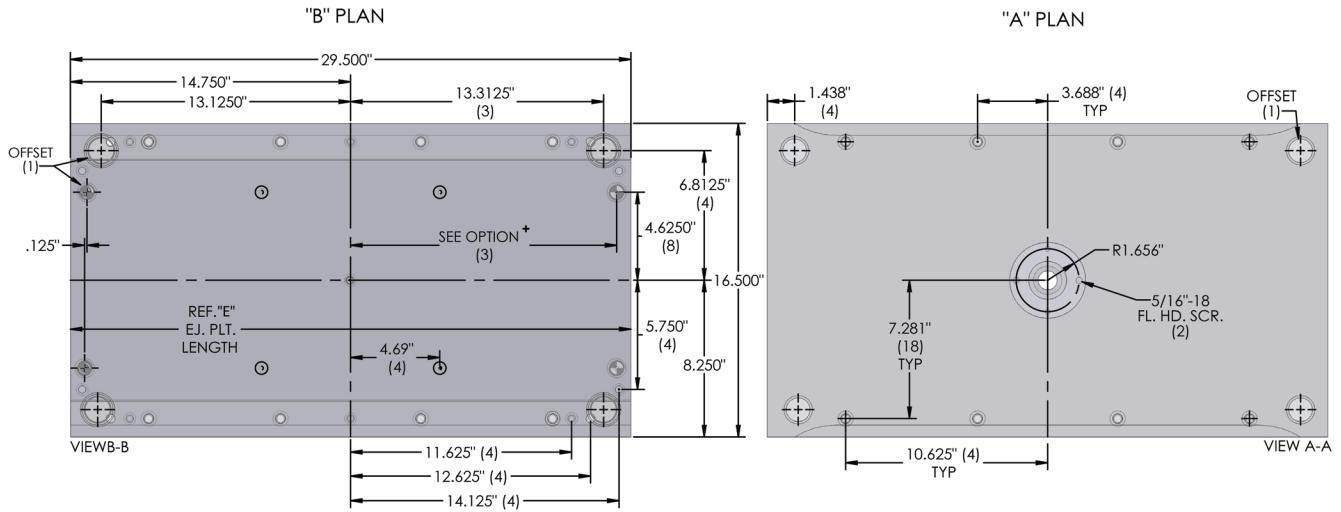
SEE CLAMP SLOT OPTIONS PAGE FOR CLAMP SLOT METHOD

C Height	3.000	3.500	4.000	4.500	5.000	6.000
Stroke	1.063	1.563	2.063	2.563	3.063	4.063

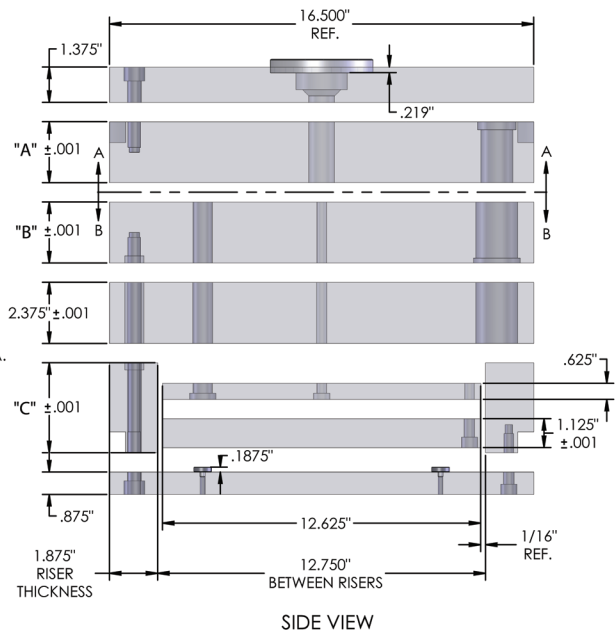
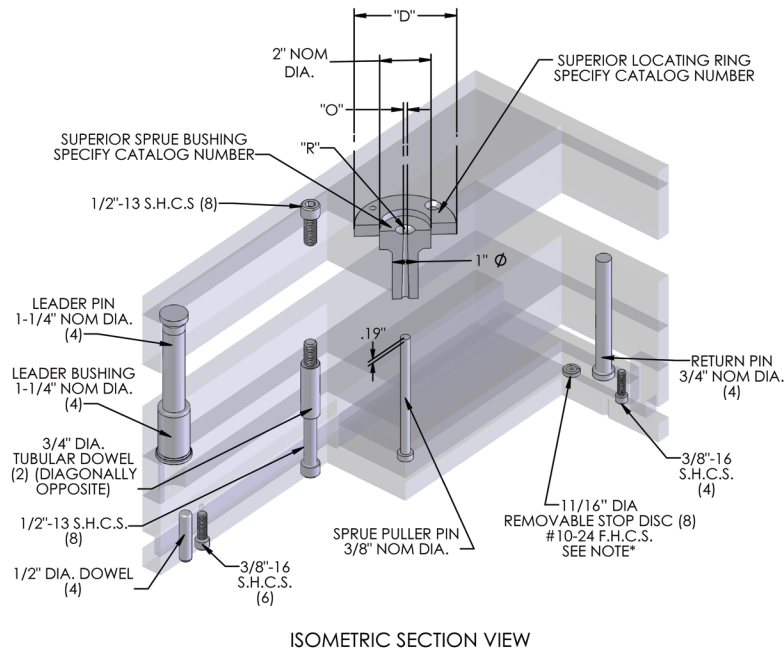


16 1/2" x 29 1/2"

1729



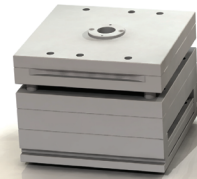
✦ SEE MOLD BASE SECTION PG. 2110



*PRESS FIT STOP PIN AVAILABLE ON REQUEST

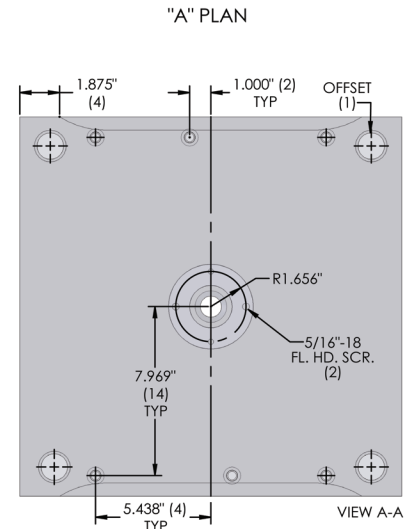
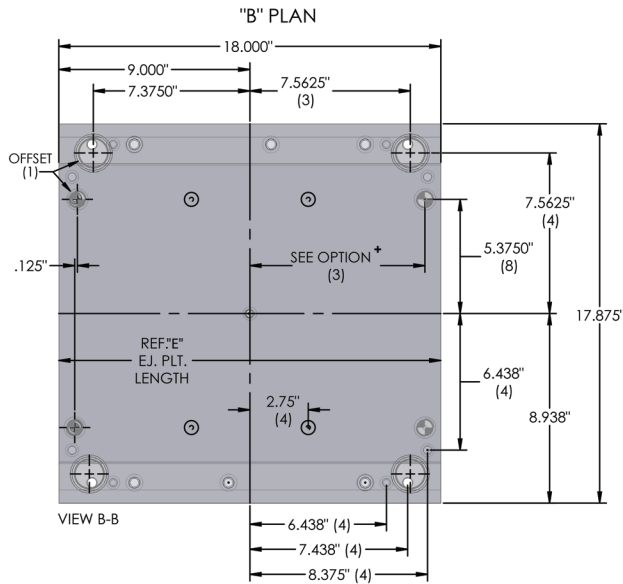
SEE CLAMP SLOT OPTIONS PAGE FOR CLAMP SLOT METHOD

C Height	3.000	3.500	4.000	4.500	5.000	6.000
Stroke	1.063	1.563	2.063	2.563	3.063	4.063

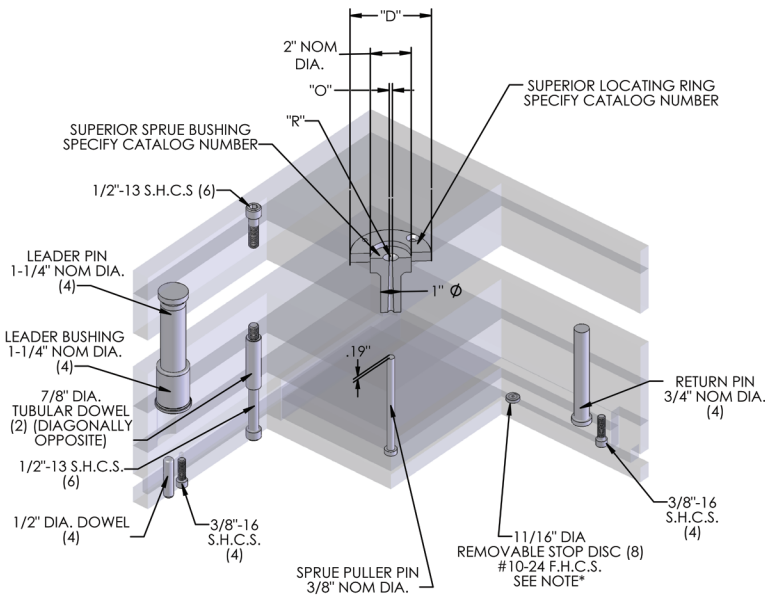


17 7/8" x 18"

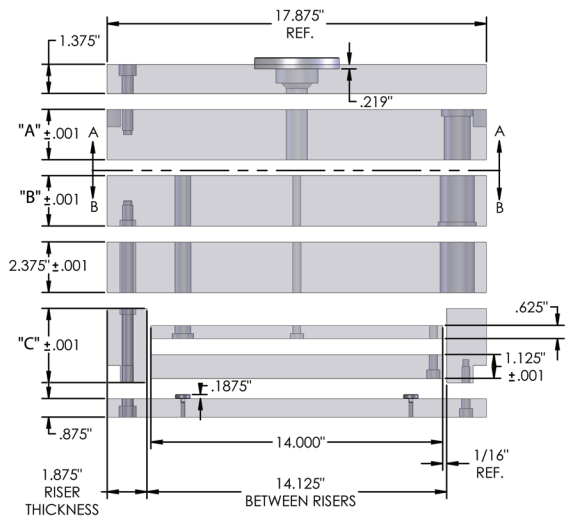
1818



SEE MOLD BASE SECTION PG. 2110



ISOMETRIC SECTION VIEW

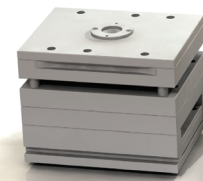


SIDE VIEW

*PRESS FIT STOP PIN AVAILABLE ON REQUEST

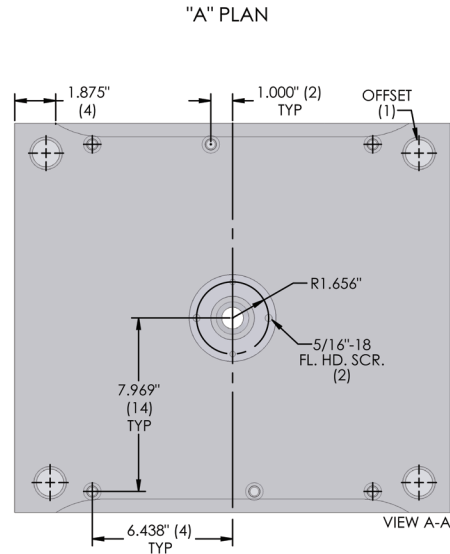
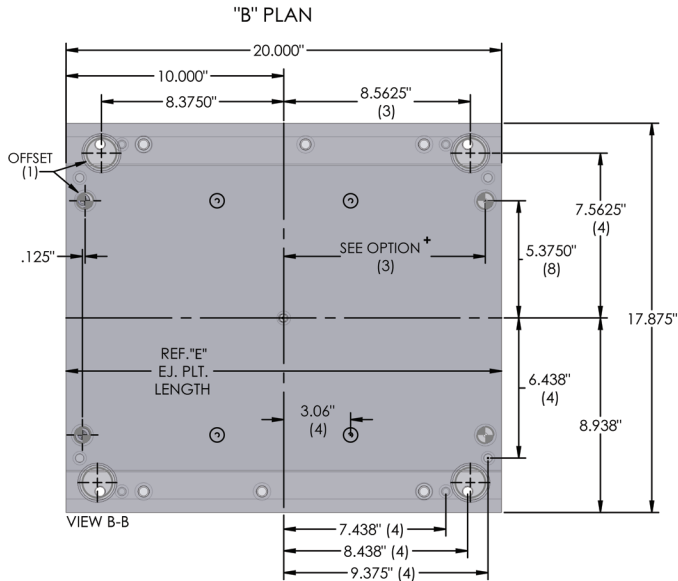
SEE CLAMP SLOT OPTIONS PAGE FOR CLAMP SLOT METHOD

C Height	3.000	3.500	4.000	4.500	5.000	6.000
Stroke	1.063	1.563	2.063	2.563	3.063	4.063

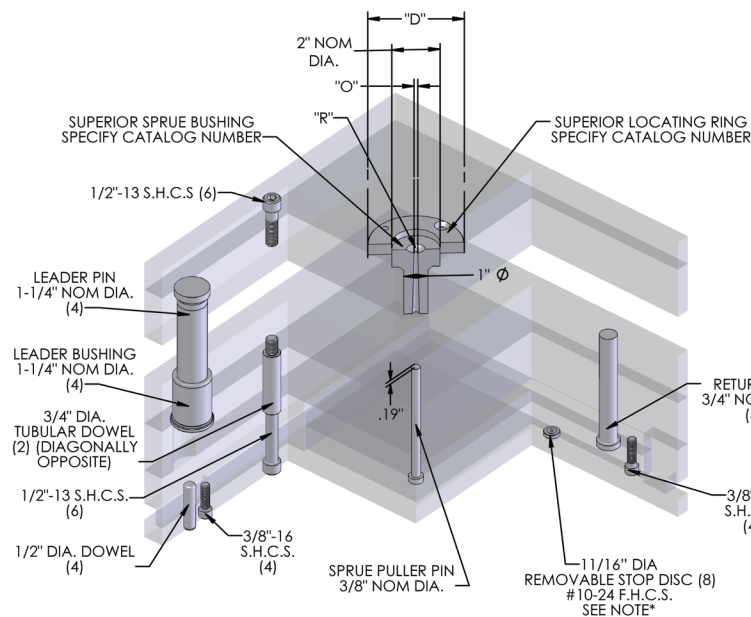


17 7/8" x 20"

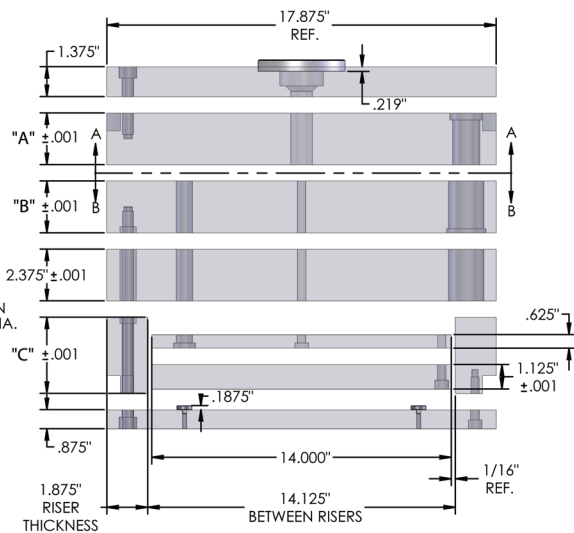
1820



SEE MOLD BASE SECTION PG. 2110



ISOMETRIC SECTION VIEW

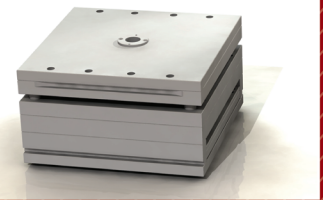


SIDE VIEW

*PRESS FIT STOP PIN AVAILABLE ON REQUEST

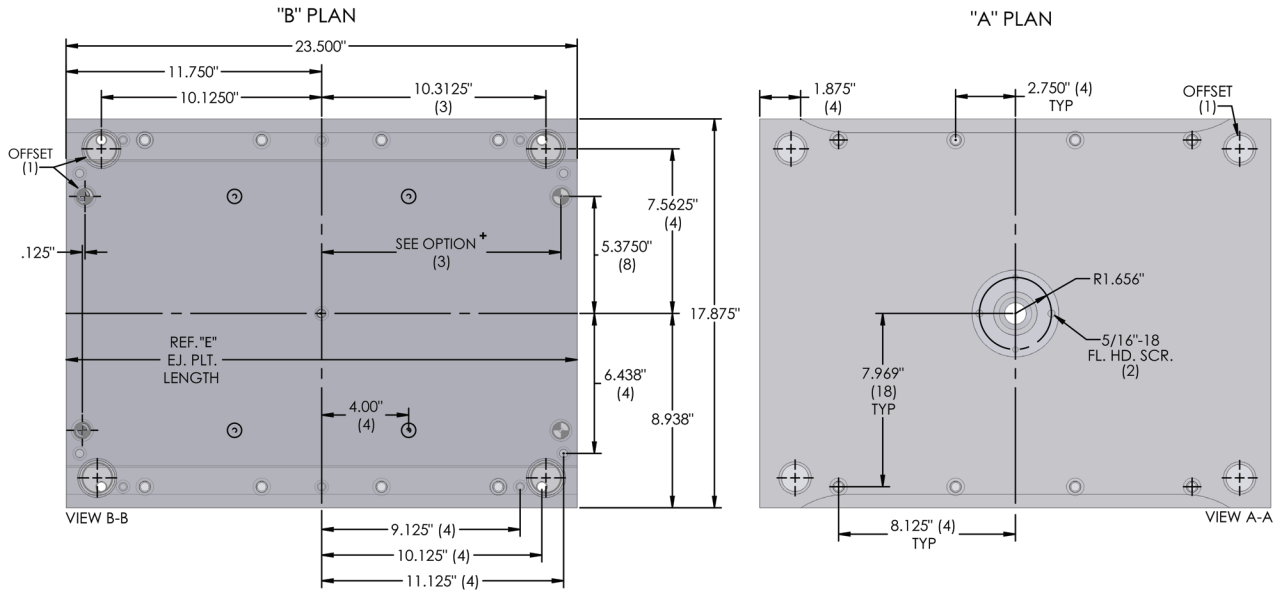
SEE CLAMP SLOT OPTIONS PAGE FOR CLAMP SLOT METHOD

C Height	3.000	3.500	4.000	4.500	5.000	6.000
Stroke	1.063	1.563	2.063	2.563	3.063	4.063

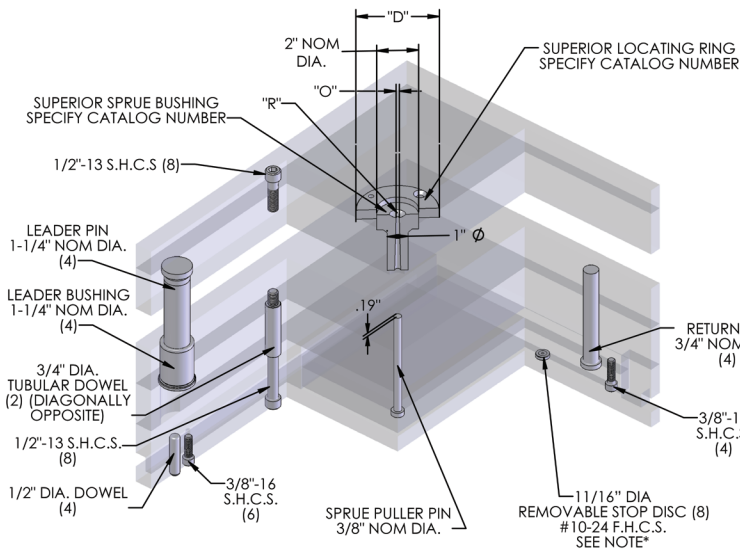


17 7/8" x 23 1/2"

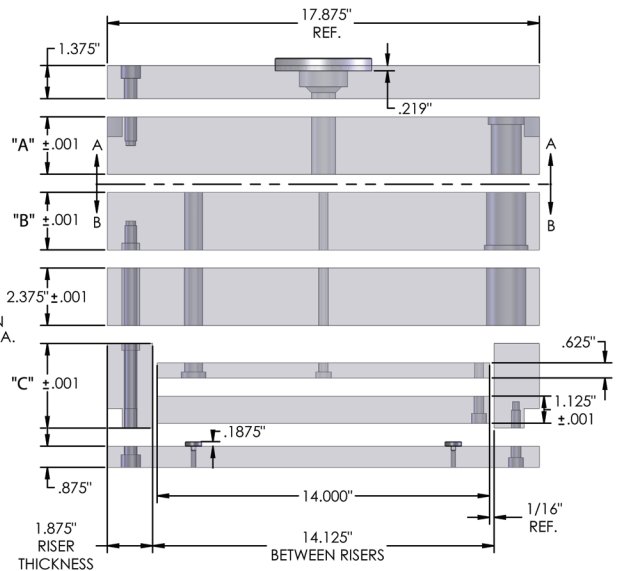
1823



+ SEE MOLD BASE SECTION PG. 2110



ISOMETRIC SECTION VIEW

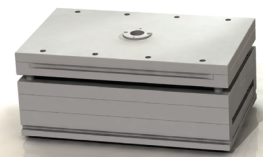


SIDE VIEW

*PRESS FIT STOP PIN AVAILABLE ON REQUEST

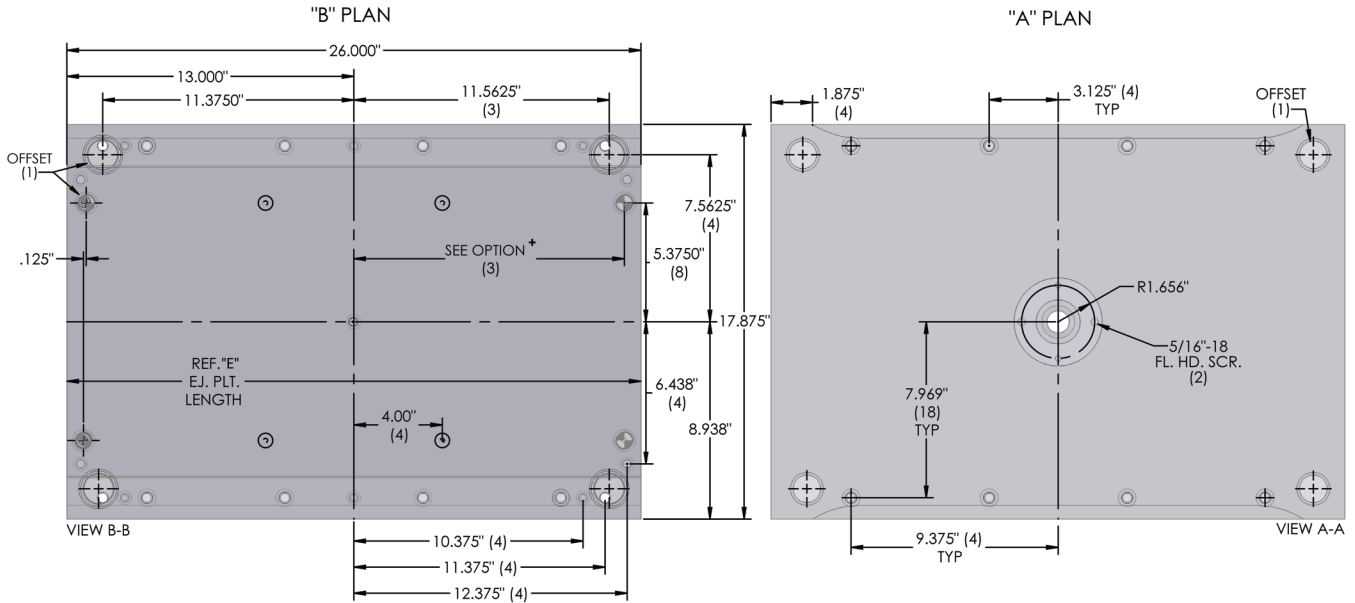
SEE CLAMP SLOT OPTIONS PAGE FOR CLAMP SLOT METHOD

C Height	3.000	3.500	4.000	4.500	5.000	6.000
Stroke	1.063	1.563	2.063	2.563	3.063	4.063

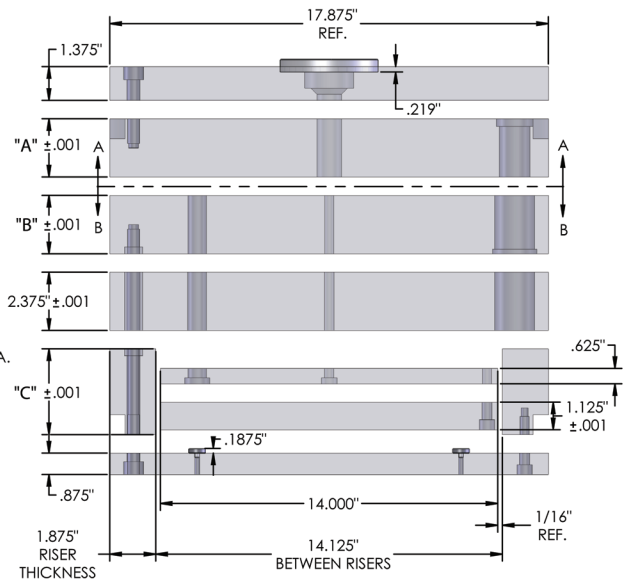
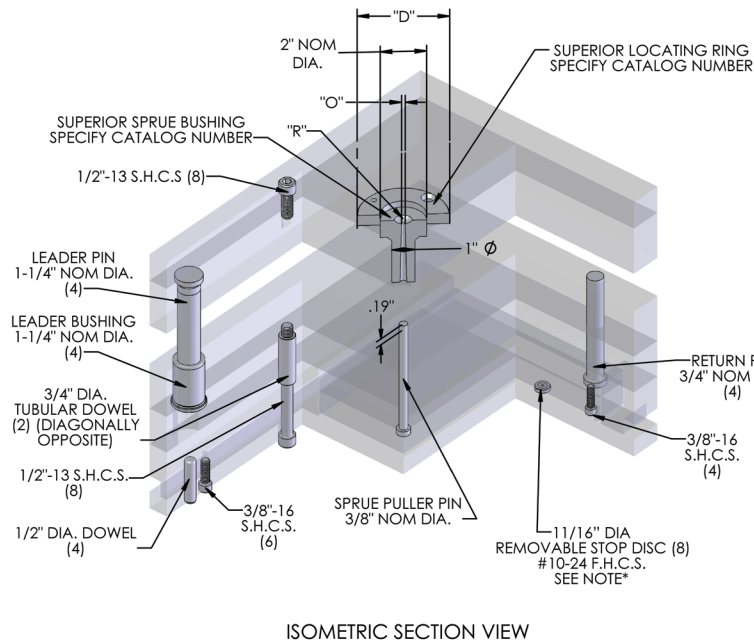


17 7/8" x 26"

1826



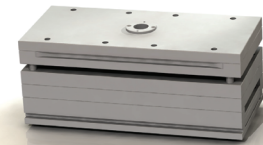
+ SEE MOLD BASE SECTION PG. 2110



*PRESS FIT STOP PIN AVAILABLE ON REQUEST

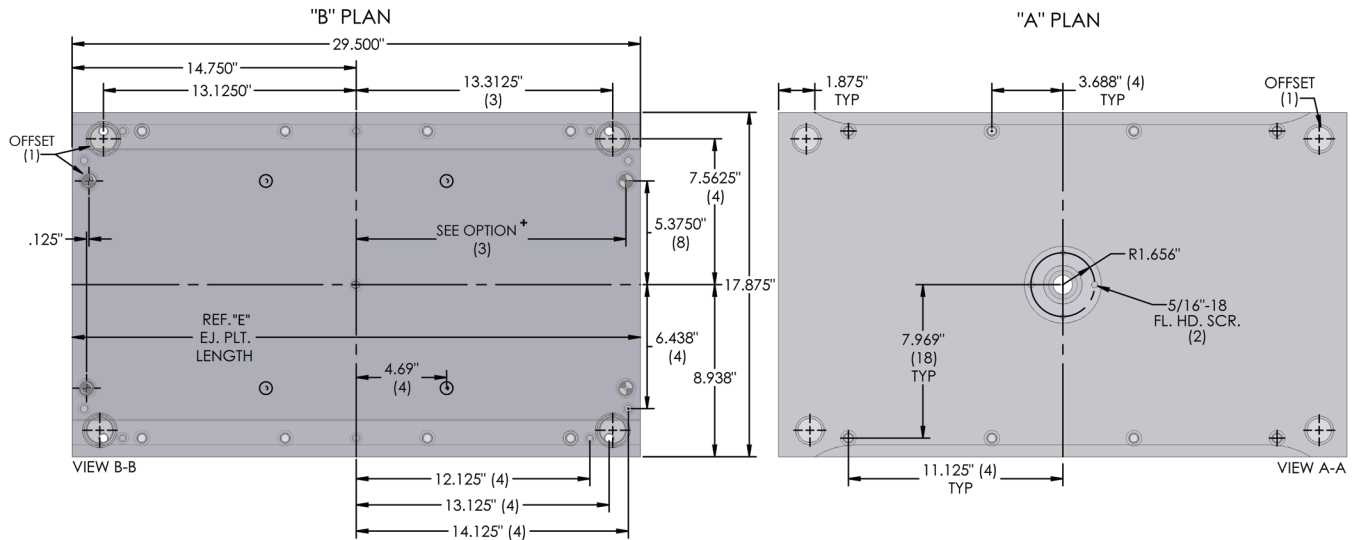
SEE CLAMP SLOT OPTIONS PAGE FOR CLAMP SLOT METHOD

C Height	3.000	3.500	4.000	4.500	5.000	6.000
Stroke	1.063	1.563	2.063	2.563	3.063	4.063

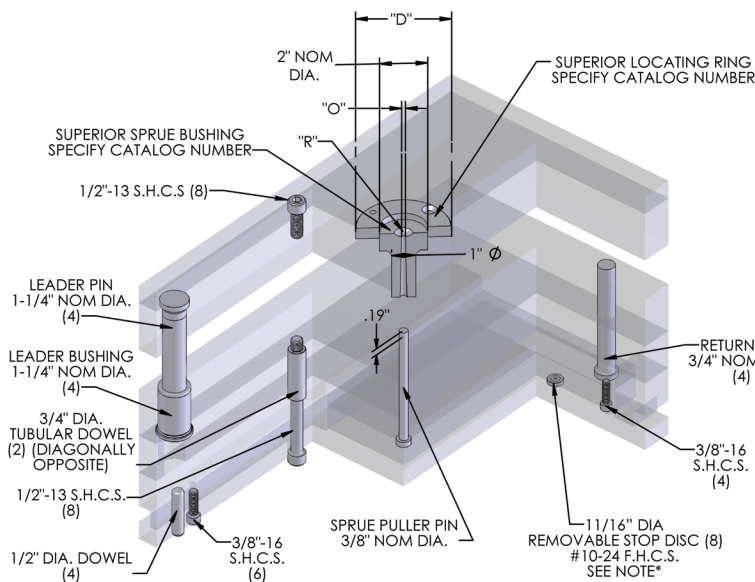


17 7/8" x 29 1/2"

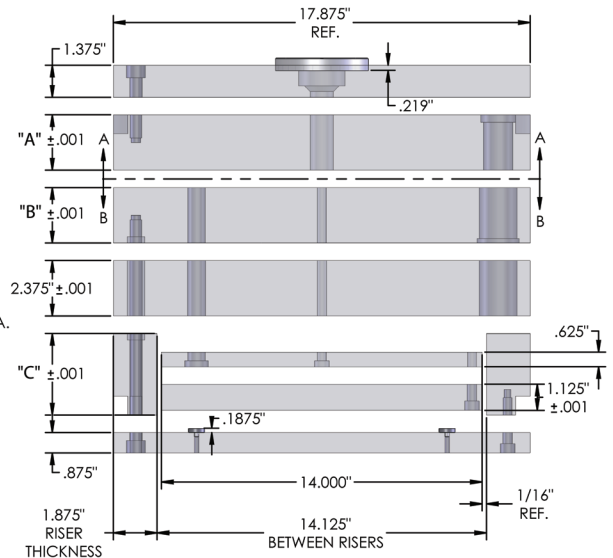
1829



+ SEE MOLD BASE SECTION PG. 2110



ISOMETRIC SECTION VIEW

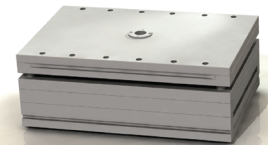


SIDE VIEW

*PRESS FIT STOP PIN AVAILABLE ON REQUEST

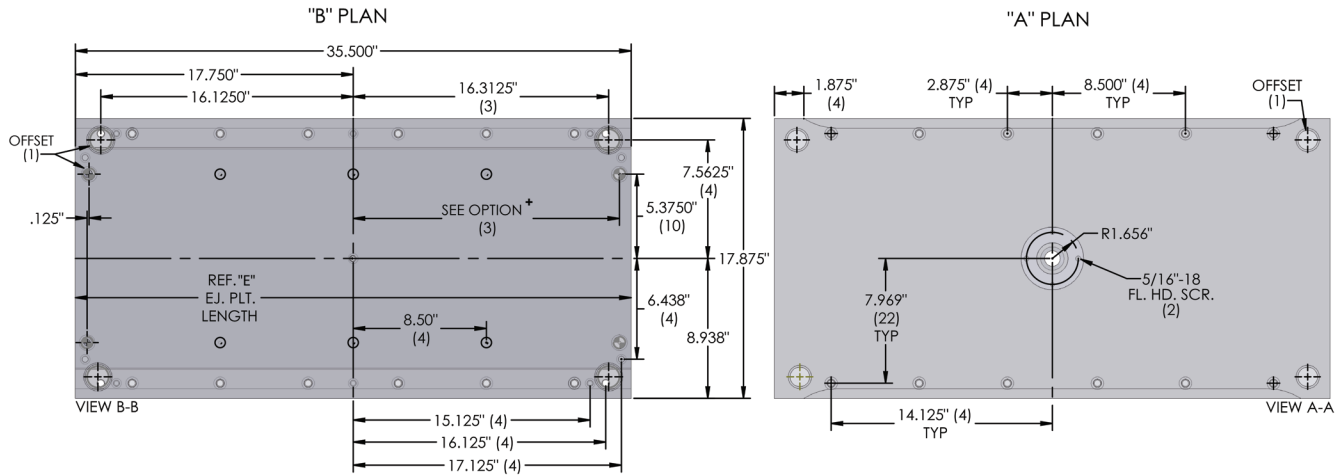
SEE CLAMP SLOT OPTIONS PAGE FOR CLAMP SLOT METHOD

C Height	3.000	3.500	4.000	4.500	5.000	6.000
Stroke	1.063	1.563	2.063	2.563	3.063	4.063

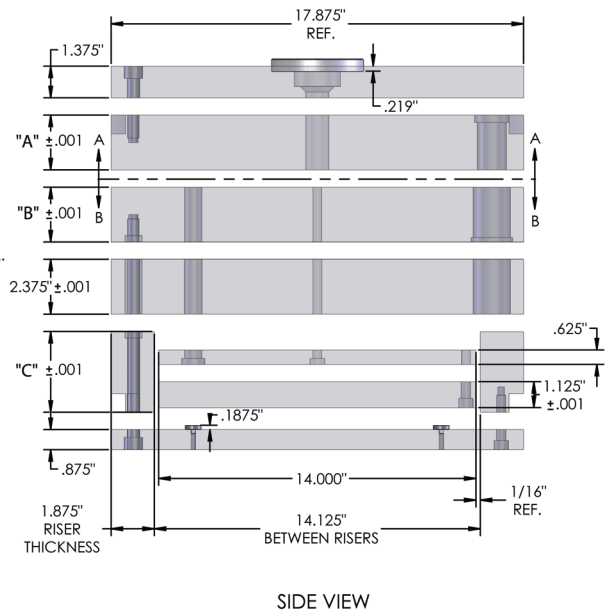
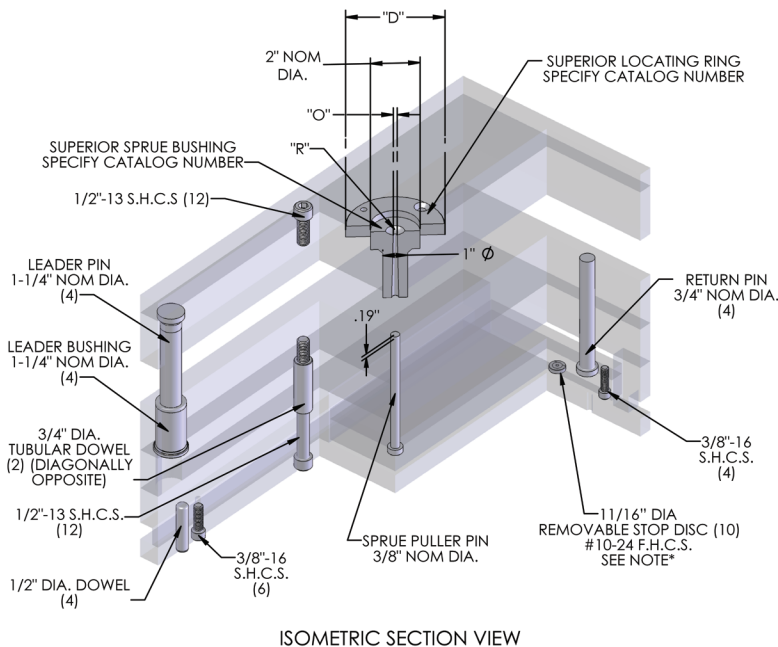


17 7/8" x 35 1/2"

1835

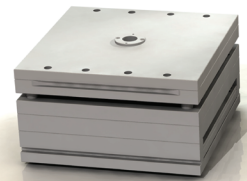


+ SEE MOLD BASE SECTION PG. 2110



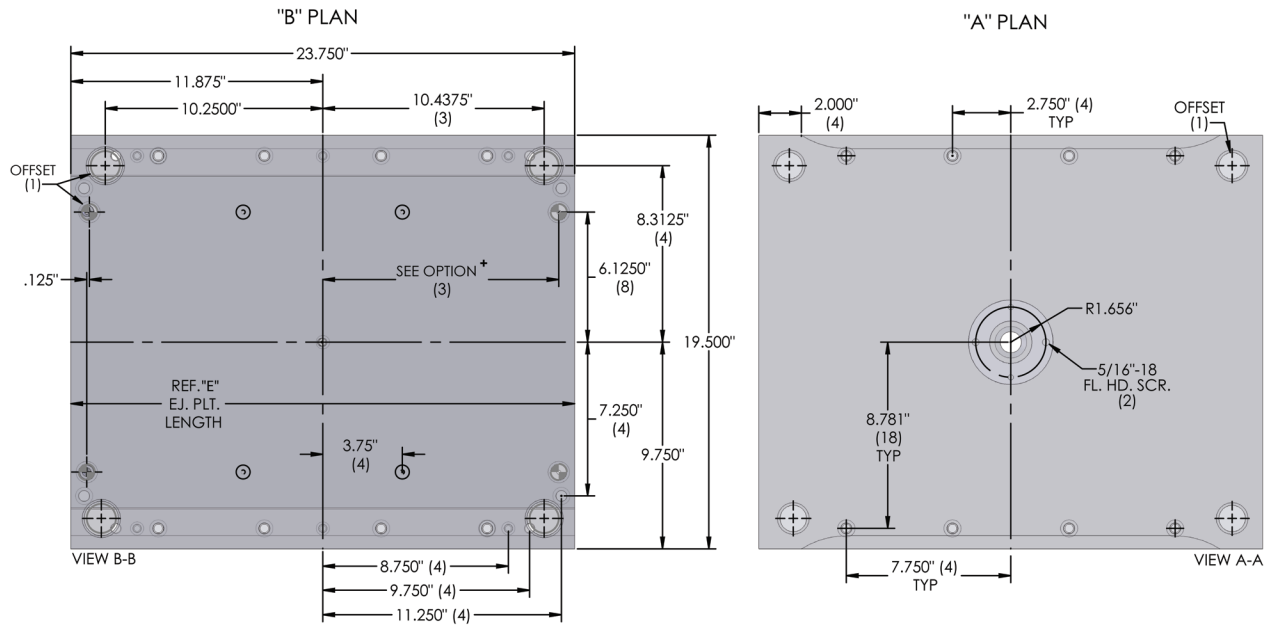
*PRESS FIT STOP PIN AVAILABLE ON REQUEST
SEE CLAMP SLOT OPTIONS PAGE FOR CLAMP SLOT METHOD

C Height	3.000	3.500	4.000	4.500	5.000	6.000
Stroke	1.063	1.563	2.063	2.563	3.063	4.063

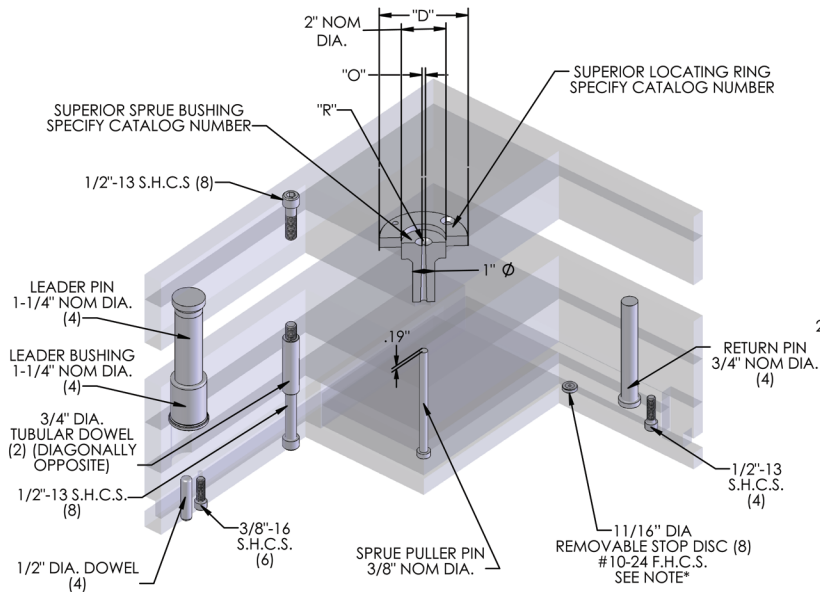


19 1/2" x 23 3/4"

1924



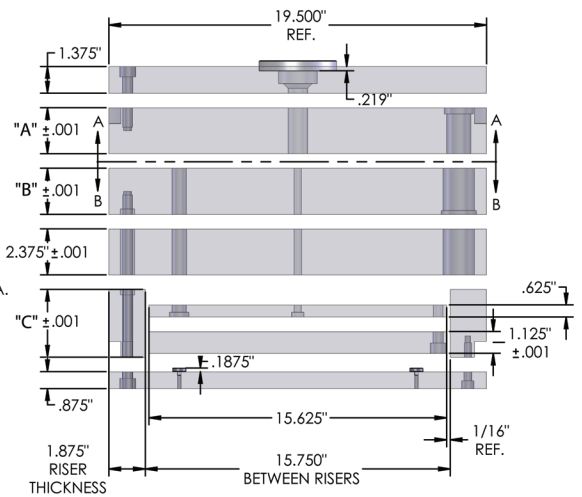
✦ SEE MOLD BASE SECTION PG. 2110



ISOMETRIC SECTION VIEW

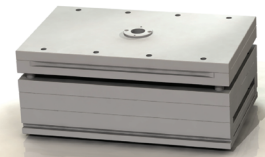
*PRESS FIT STOP PIN AVAILABLE ON REQUEST

SEE CLAMP SLOT OPTIONS PAGE FOR CLAMP SLOT METHOD



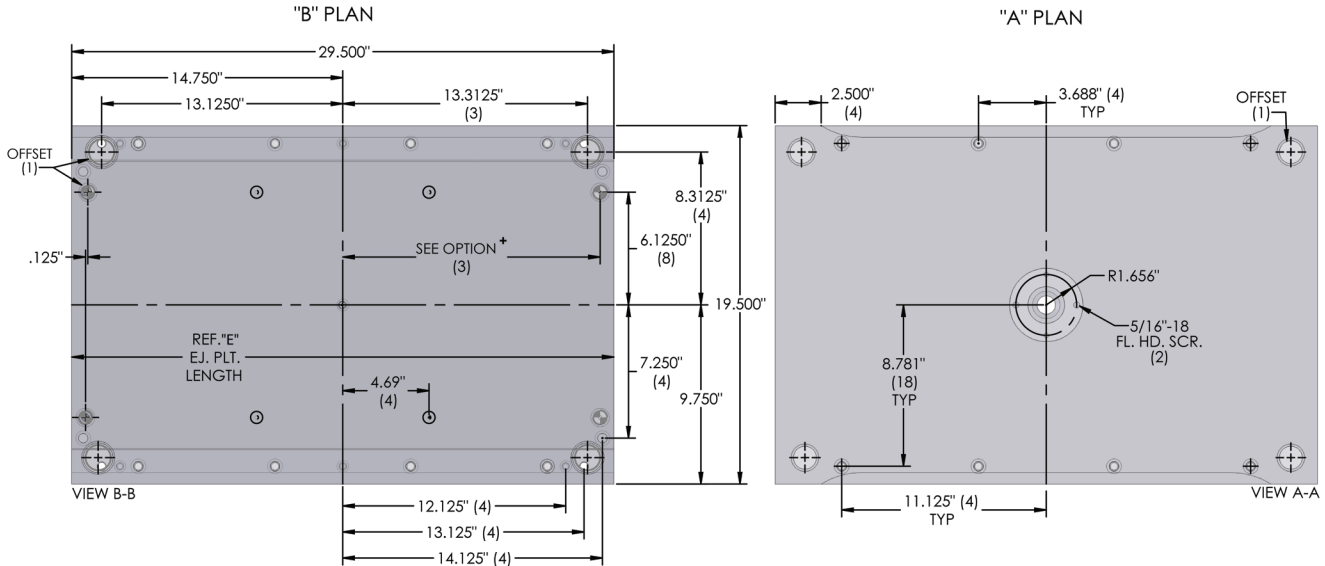
SIDE VIEW

C Height	3.000	3.500	4.000	4.500	5.000	6.000
Stroke	1.063	1.563	2.063	2.563	3.063	4.063

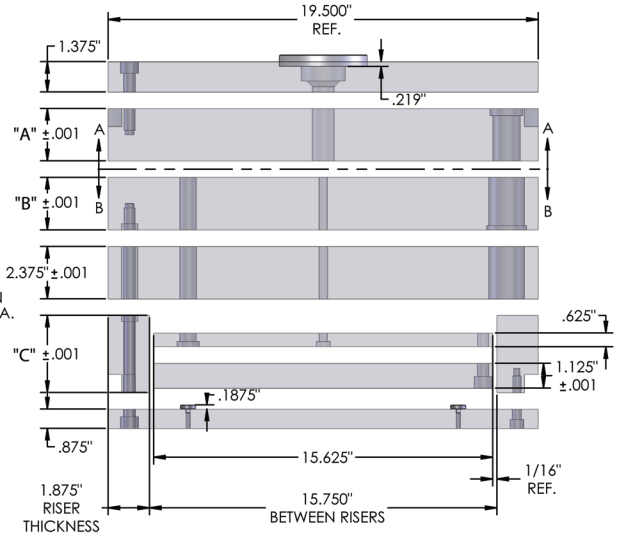
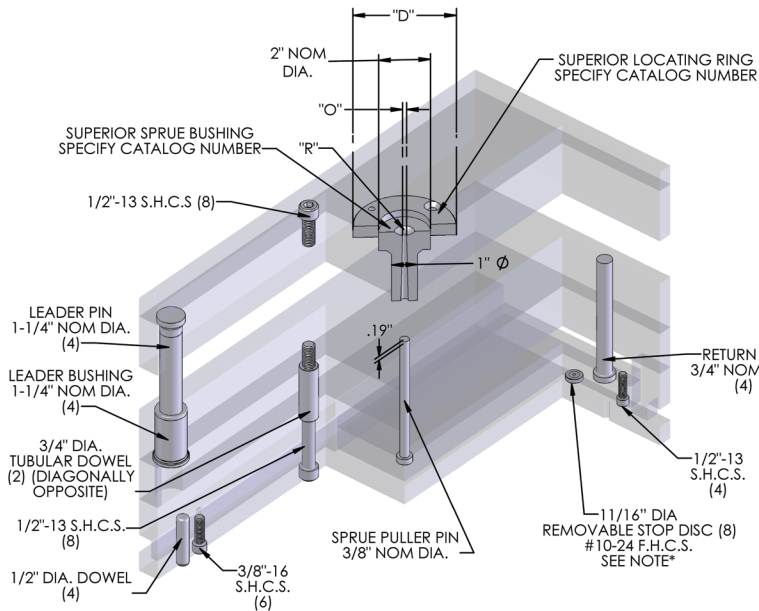


19 1/2" x 29 1/2"

1929

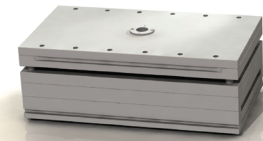


✦ SEE MOLD BASE SECTION PG. 21 10



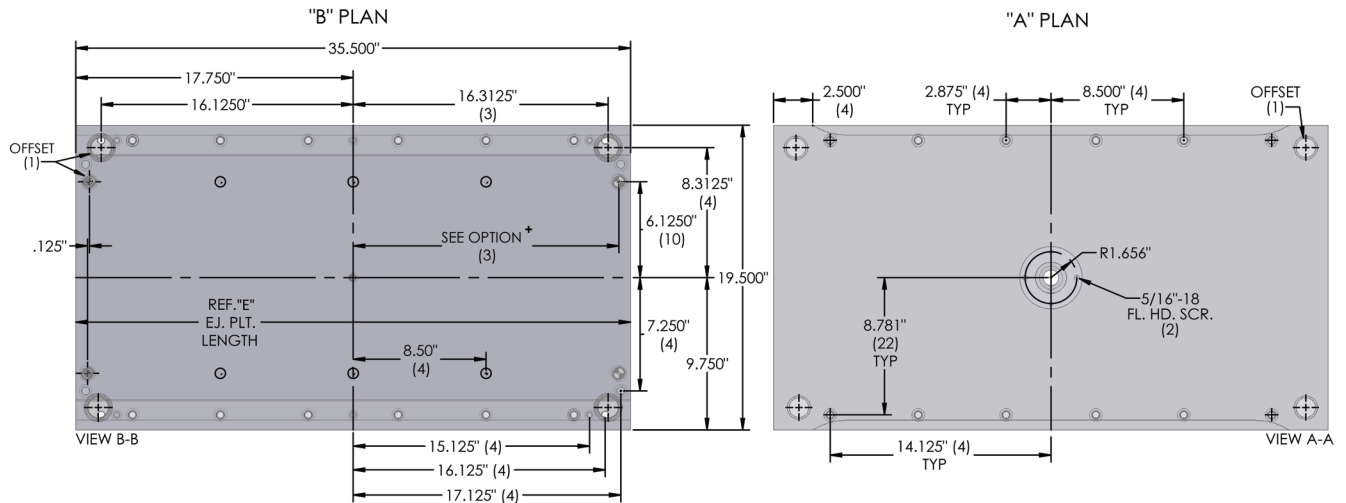
*PRESS FIT STOP PIN AVAILABLE ON REQUEST
 SEE CLAMP SLOT OPTIONS PAGE FOR CLAMP SLOT METHOD

C Height	3.000	3.500	4.000	4.500	5.000	6.000
Stroke	1.063	1.563	2.063	2.563	3.063	4.063

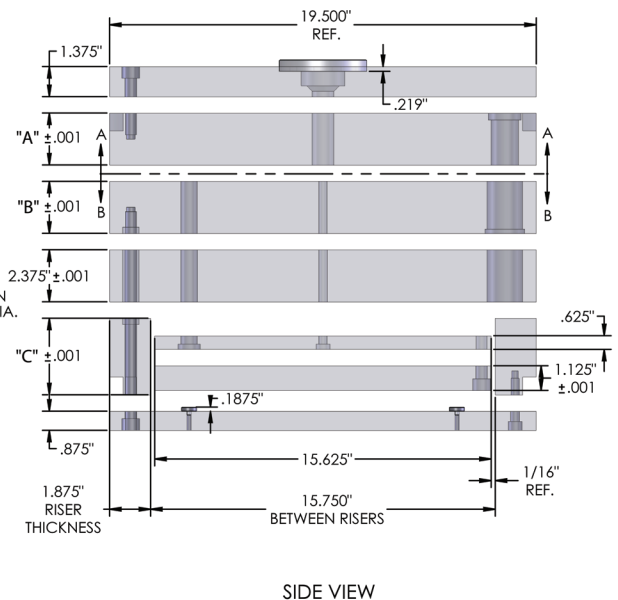
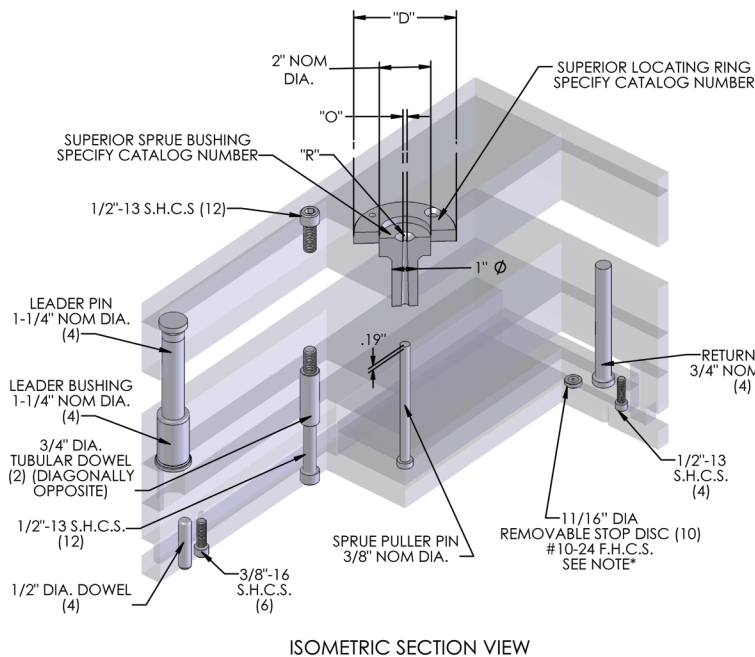


19 1/2" x 35 1/2"

1935



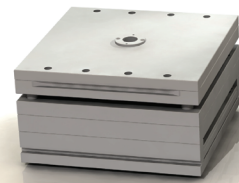
+ SEE MOLD BASE SECTION PG. 2110



*PRESS FIT STOP PIN AVAILABLE ON REQUEST

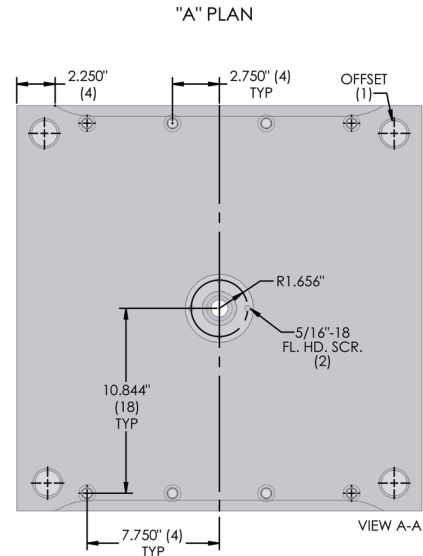
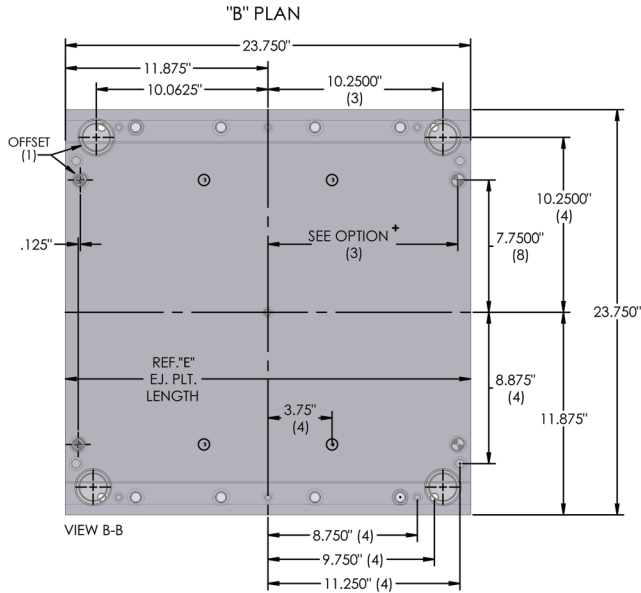
SEE CLAMP SLOT OPTIONS PAGE FOR CLAMP SLOT METHOD

C Height	3.000	3.500	4.000	4.500	5.000	6.000
Stroke	1.063	1.563	2.063	2.563	3.063	4.063

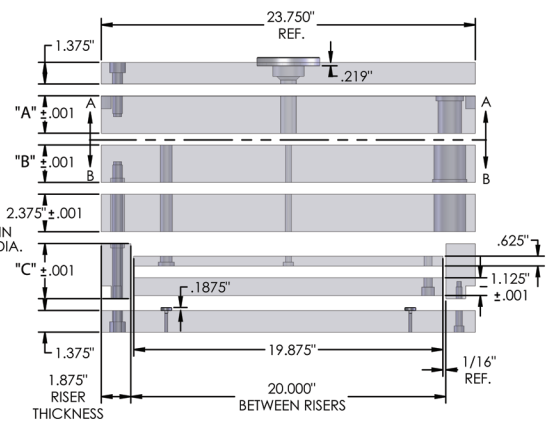
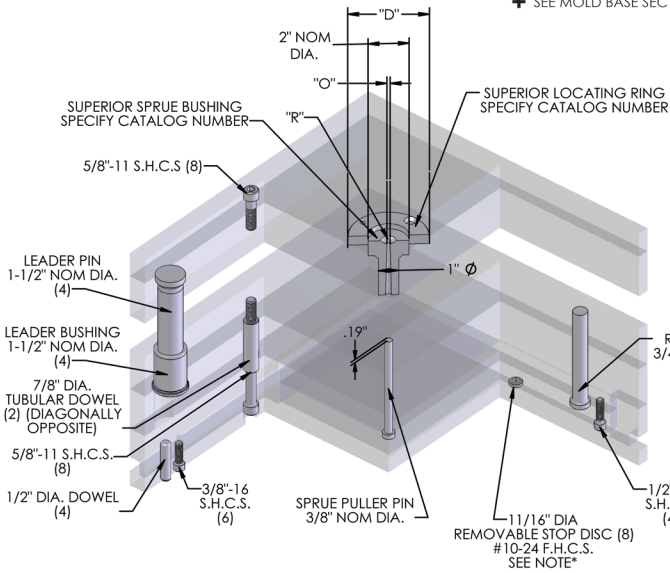


23 3/4" x 23 3/4"

2424



* SEE MOLD BASE SECTION PG. 2110



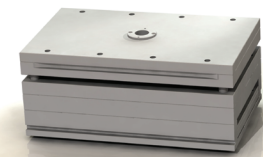
ISOMETRIC SECTION VIEW

SIDE VIEW

*PRESS FIT STOP PIN AVAILABLE ON REQUEST

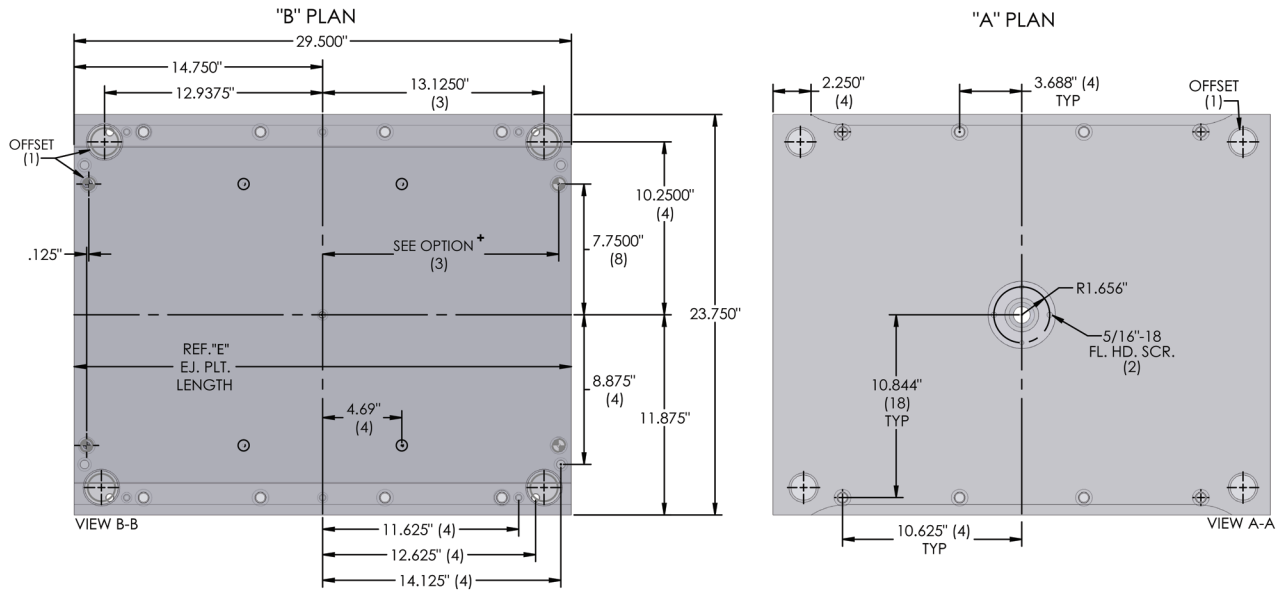
SEE CLAMP SLOT OPTIONS PAGE FOR CLAMP SLOT METHOD

C Height	3.000	3.500	4.000	4.500	5.000	6.000
Stroke	1.063	1.563	2.063	2.563	3.063	4.063

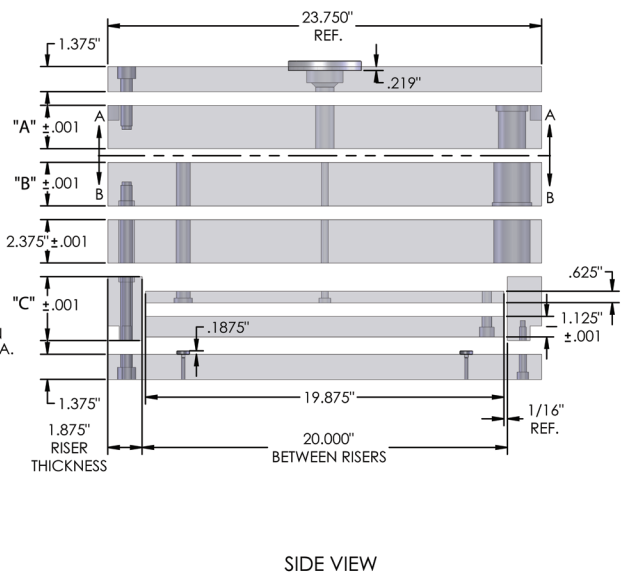
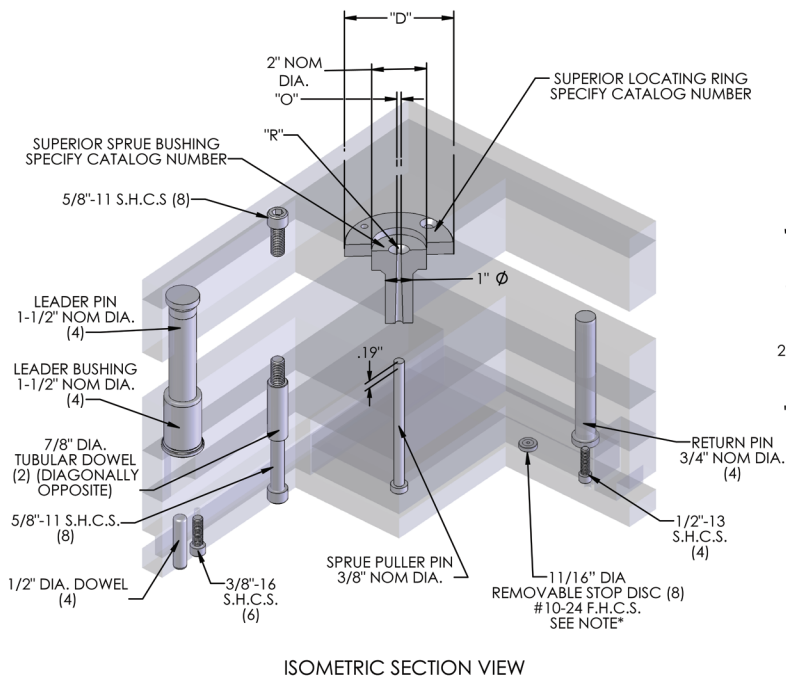


23 3/4" x 29 1/2"

2429



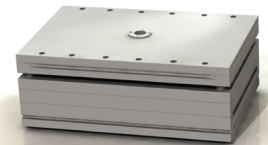
+ SEE MOLD BASE SECTION PG. 2110



*PRESS FIT STOP PIN AVAILABLE ON REQUEST

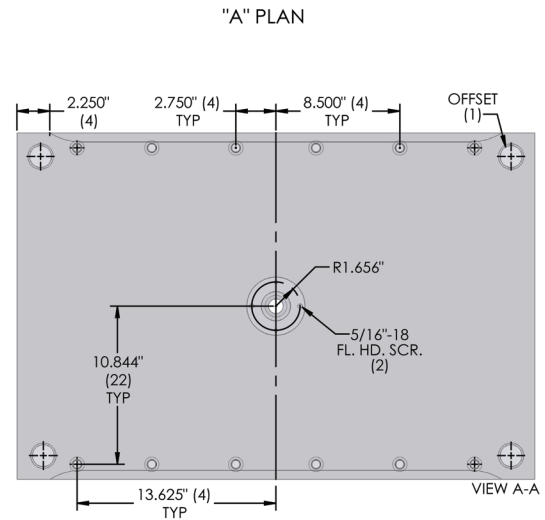
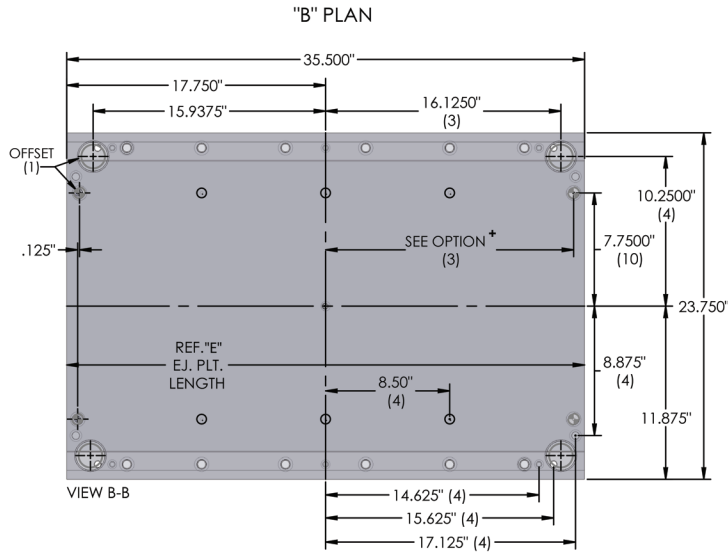
SEE CLAMP SLOT OPTIONS PAGE FOR CLAMP SLOT METHOD

C Height	3.000	3.500	4.000	4.500	5.000	6.000
Stroke	1.063	1.563	2.063	2.563	3.063	4.063

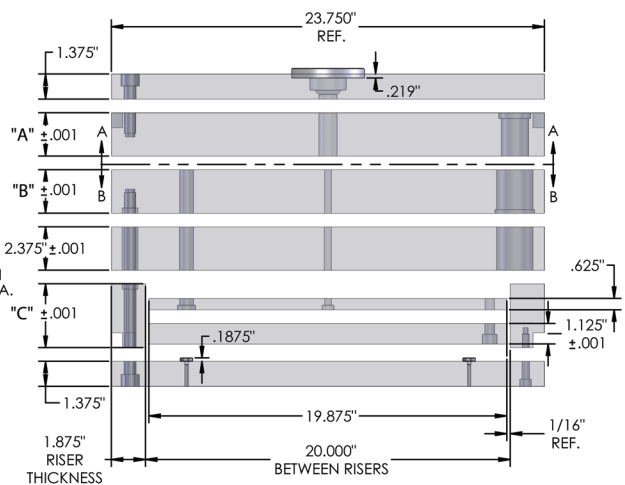
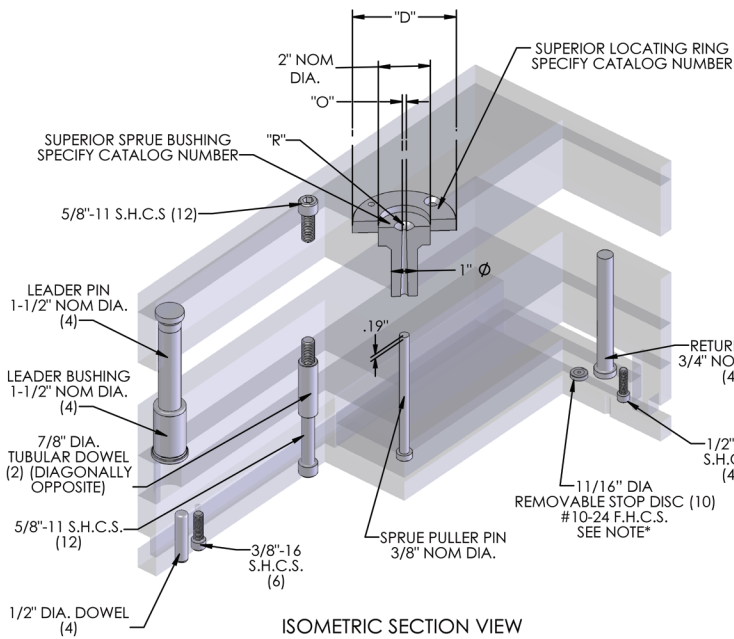


23 3/4" x 35 1/2"

2435



✦ SEE MOLD BASE SECTION PG. 2110



*PRESS FIT STOP PIN
AVAILABLE ON REQUEST

SEE CLAMP SLOT OPTIONS
PAGE FOR CLAMP SLOT
METHOD

C Height	3.000	3.500	4.000	4.500	5.000	6.000
Stroke	1.063	1.563	2.063	2.563	3.063	4.063



NOTES:

RETURN PINS - OUTBOARD

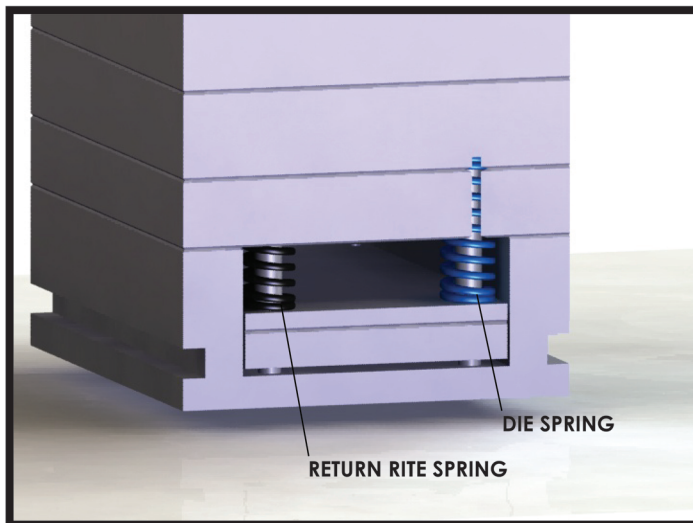
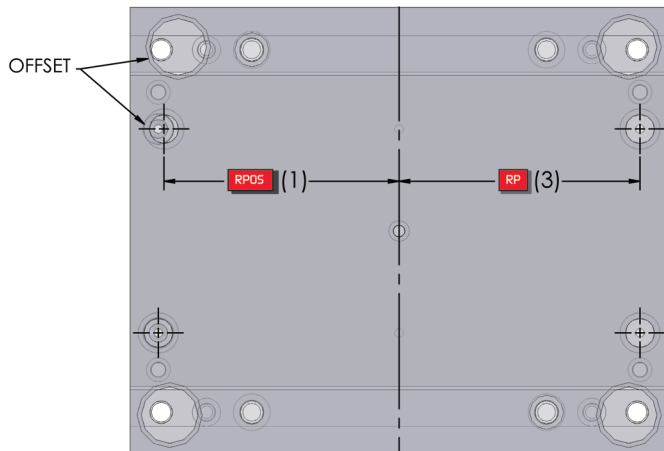
INBOARD →

Superior offers two RETURN PIN locations to best suit your mold design requirements. Both locations are considered 'standard' at Superior Die Set and will not affect the price or lead time of the mold base.

Location 'Outboard' puts the pins in the traditional location which offers you the maximum work area inside the mold base. However, when using 'die springs' these locations will cause a break out where the spring pocket meets the outside edge of the mold base. This can be simply solved by using Return Rite™ springs which requires a smaller spring pocket hole and eliminates the break out (see note below).

Special return pin locations are also available upon request.

RETURN PIN POSITION



RETURN PIN LOCATIONS

MOLD BASE SIZE (CATALOG NO.)	PIN LOCATION - X DIMENSION	
	OUTBOARD (TRADITIONAL) RP 3 - PL	RPOS 1 - PL
0808 *	3.3750	3.2500
0812 *	5.3750	5.2500
1008	3.3750	3.2500
1012	5.3125	5.1875
1016	7.3750	7.2500
1020	9.3750	9.2500
1112	5.3750	5.2500
1114	6.3750	6.2500
1118	8.3750	8.2500
1123	11.1250	11.0000
1212	5.3750	5.2500
1215	6.8750	6.7500
1220	9.3750	9.2500
1223	11.1250	11.0000
1315	6.8750	6.7500
1318	8.3750	8.2500
1321	9.6250	9.5000
1323	11.0000	10.8750
1326	12.2500	12.1250
1329	14.0000	13.8750
1518	8.2500	8.1250
1524	11.1250	11.0000
1529	14.0000	13.8750
1616	7.2500	7.1250
1620	9.2500	9.1250
1623	11.0000	10.8750
1626	12.2500	12.1250
1629	14.0000	13.8750
1635	17.0000	16.8750
1724	11.1250	11.0000
1729	14.0000	13.8750
1818	8.2500	8.1250
1820	9.2500	9.1250
1823	11.0000	10.8750
1826	12.2500	12.1250
1829	14.0000	13.8750
1835	17.0000	16.8750
1924	11.1250	11.0000
1929	14.0000	13.8750
1935	17.0000	16.8750
2424	11.1250	11.0000
2429	14.0000	13.8750
2435	17.0000	16.8750

NOTE: * Spring break-out will still occur with Return Rite springs on these two mold base sizes due to extreme outboard pin locations.

RETURN PINS - INBOARD

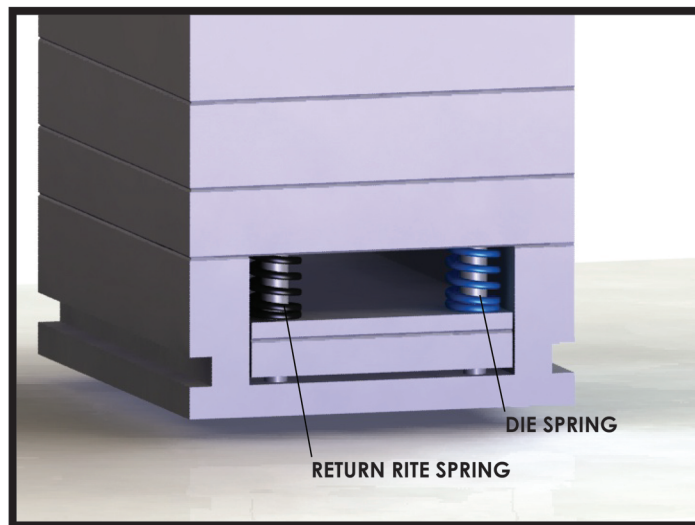
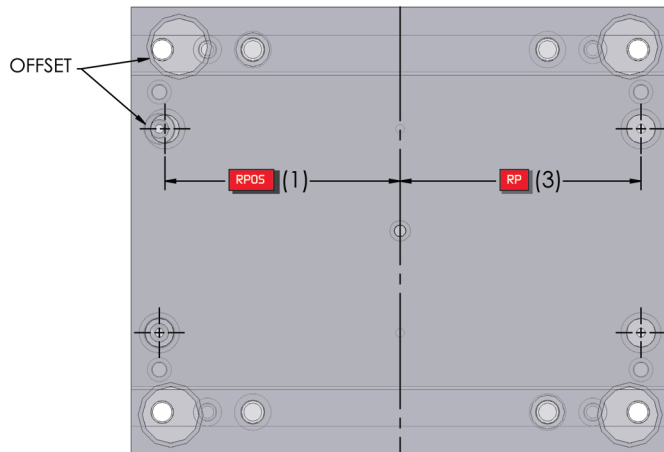
OUTBOARD →

Superior offers two RETURN PIN locations to best suit your mold design requirements. Both locations are considered 'standard' at Superior Die Set and will not affect the price or lead time of the mold base.

Location 'Inboard' puts the pins inward 1/8" from the traditional locations so that spring pocket holes will not break out when using die springs. Return Rite™ springs can also be used in these locations to increase work area in the mold base. For more information regarding Return Rite springs, see our Component section.

Special return pin locations are also available upon request.

RETURN PIN POSITION



RETURN PIN LOCATIONS

MOLD BASE SIZE (CATALOG NO.)	PIN LOCATION - X DIMENSION INBOARD	
	RP 3 - PL	RPOS 1 - PL
0808	3.2500	3.1250
0812	5.2500	5.1250
1008	3.2500	3.1250
1012	5.1875	5.0625
1016	7.2500	7.1250
1020	9.2500	9.1250
1112	5.2500	5.1250
1114	6.2500	6.1250
1118	8.2500	8.1250
1123	11.0000	10.8750
1212	5.2500	5.1250
1215	6.7500	6.6250
1220	9.2500	9.1250
1223	11.0000	10.8750
1315	6.7500	6.6250
1318	8.2500	8.1250
1321	9.5000	9.3750
1323	10.8750	10.7500
1326	12.1250	12.0000
1329	13.8750	13.7500
1518	8.1250	10.8750
1524	11.0000	13.7500
1529	13.8750	8.0000
1616	7.1250	10.7500
1620	9.1250	12.0000
1623	10.8750	7.0000
1626	12.1250	13.7500
1629	13.8750	9.0000
1635	16.8750	16.7500
1724	11.0000	10.8750
1729	13.8750	13.7500
1818	8.1250	10.7500
1820	9.1250	12.0000
1823	10.8750	8.0000
1826	12.1250	13.7500
1829	13.8750	9.0000
1835	16.8750	16.7500
1924	11.0000	10.8750
1929	13.8750	13.7500
1935	16.8750	16.7500
2424	11.0000	10.8750
2429	13.8750	13.7500
2435	16.8750	16.7500



900 West Drexel Avenue
Oak Creek, WI 53154

(800) 558-6040
FAX (800) 657-0855

www.superiordieset.com
messages@superiordieset.com

copyright © 2012 Superior Die Set Corp.